

Notice of Modification

Section 75W of the *Environmental Planning and Assessment Act 1979*

As delegate of the Minister for Planning, I modify the development consent referred to in Schedule 1, as set out in Schedule 2.

Richard Pearson
Deputy Director-General,
Development Assessments and Systems Performance

Sydney,

22nd March

2011

SCHEDULE 1

The development consent (DA 128-5-2005) granted by the Minister for Planning on 21 December 2005 for the development of the Lynwood hard rock quarry and associated infrastructure, located west of Marulan, in the Goulburn Mulwaree local government area.

SCHEDULE 2

1. Delete the definitions for "DECC", "DPI" and "DWE" in the Definitions in Schedule 2, and insert in alphabetical order the following:

DECCW	Department of Environment, Climate Change and Water
EA	Environmental Assessment
I&I NSW	Industry & Investment NSW
NOW	NSW Office of Water
2. Delete all references to "DECC" and "Department of Environment and Conservation" and replace with "DECCW".
3. Delete all references to "DPI" and replace with "I&I NSW".
4. Delete all references to "DWE" and replace with "NOW".
5. In condition 2 of schedule 2, delete all words after "January 2009;" and replace with:
 - d) Modification Application DA 128-5-2005 MOD 2 and the accompanying EA titled *Environmental Assessment Proposed Modifications to Lynwood Quarry, Marulan*, dated October 2010, prepared by Umwelt (Australia) Pty Limited, including the response to submissions dated January 2011; and
 - e) Conditions of this consent.
6. Delete "and" in condition 2(b) of schedule 2.
7. Delete condition 4A of schedule 2 and replace with:

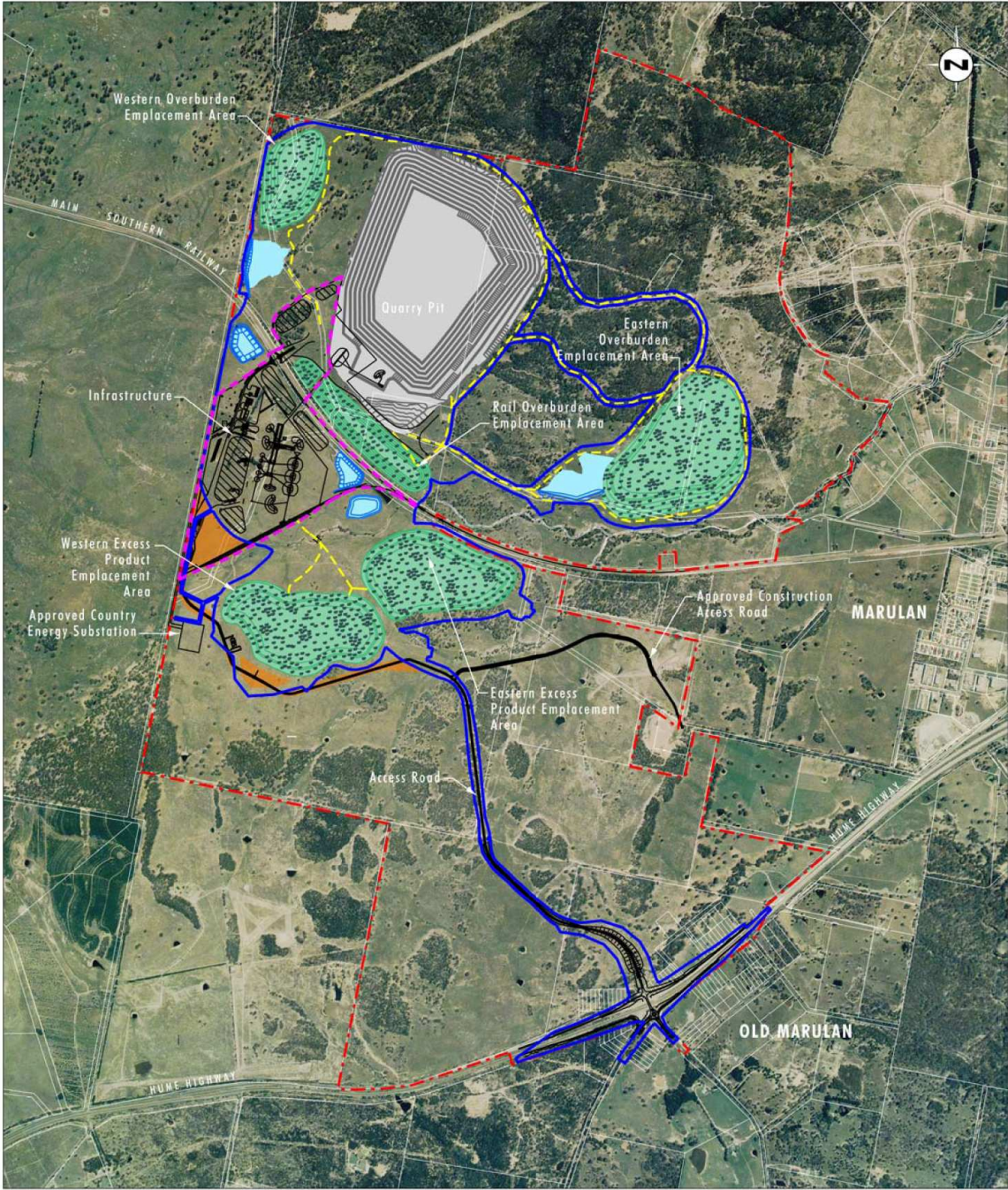
- 4A. Within 3 months of any modification of this consent, unless otherwise agreed to by the Director-General, the Applicant shall review and, if necessary, revise the strategies, plans, and programs required under this consent to the satisfaction of the Director-General.
8. In condition 6 of schedule 2, delete “more than 100,000 tonnes of product from the site in a year by road” and replace with “any product from the site by road, except for use in construction of the interchange and associated works”.
9. In condition 18 of schedule 3:
(a) in paragraph (a), delete “E,”;
(b) in paragraph (b), delete “and D” and replace with “, D and E”; and
(c) beneath “Notes”, delete the 2nd and 3rd dot points and replace with:
- *Dams must be designed to be in accordance with “Managing Urban Stormwater: Soils and Construction (the Blue Book)”, including Volume 1 (Landcom, 2004) and Volume 2 (DECCW, 2008).*
10. After condition 19 of schedule 3, insert the following:
- 19A. The Applicant shall ensure it has sufficient water for all stages of the development, and if necessary, adjust the scale of operations to match its licensed water entitlements, to the satisfaction of the Director-General.
11. In condition 26 of schedule 3, delete all words after “Hume Highway Interchange;” where first occurring and insert the following:
- (d) where practicable, no heavy vehicle construction traffic movements occur on George Street during school zone times (ie between 8:00am to 9:30am and 2:30pm to 4:00pm on school days);
 - (e) heavy vehicle construction traffic using George St does not exceed 40 kph; and
 - (f) no traffic uses the construction site access routes once the proposed Hume Highway Interchange has been commissioned.
- Note: The temporary construction access routes are shown in Appendix 5. The requirements of this condition are to be reflected in the Construction Traffic Management Plan required under condition 28 below.*
12. Delete Appendixes 1, 2, 4, 5, 6 and the first figure of Appendix 8 and replace with the following:

APPENDIX 1: SCHEDULE OF LAND

Land to which the Development Application refers:

Lot No.	DP No.	Owner
112	750029	Holcim
2	1116876	Holcim
1	1116876	Country Energy
230	750029	Holcim
249	750029	Holcim
3 - 4	1036993	Holcim
1	1074819	Holcim
1	1117910	Holcim
1 and 3	1074107	Holcim
10	700579	Holcim
7001	1025603	Crown Land
7002	1025604	Crown Land
	2153 - 3040	Crown Land
2 - 15	196132	Holcim
1/Section 8	758653	Crown Land
2-4/Section 5	758653	Holcim
1/Section 5	758653	Crown Land
Part 7 and Section 1	758653	Holcim
10/Section 10	758653	Privately Owned
10 - 11	111641	Holcim
2	214304	Holcim
1 - 14	797340	Holcim
1 - 6	1140546	Holcim
8	1112296	Holcim
3	111640	Holcim
1 - 2	1111583	Holcim
2	1117910	Goulburn Mulwaree Council
2 - 3	1107232	Holcim
Part Stoney Creek Road		
Part Main Southern Railway Line		
Part Hume Highway		
Part Marulan South Road		
Part Jerrara Road		
Part Joarimin Creek		
Crown land and Crown road reserves within the DA area		

APPENDIX 2: LIMITS OF EXTRACTION



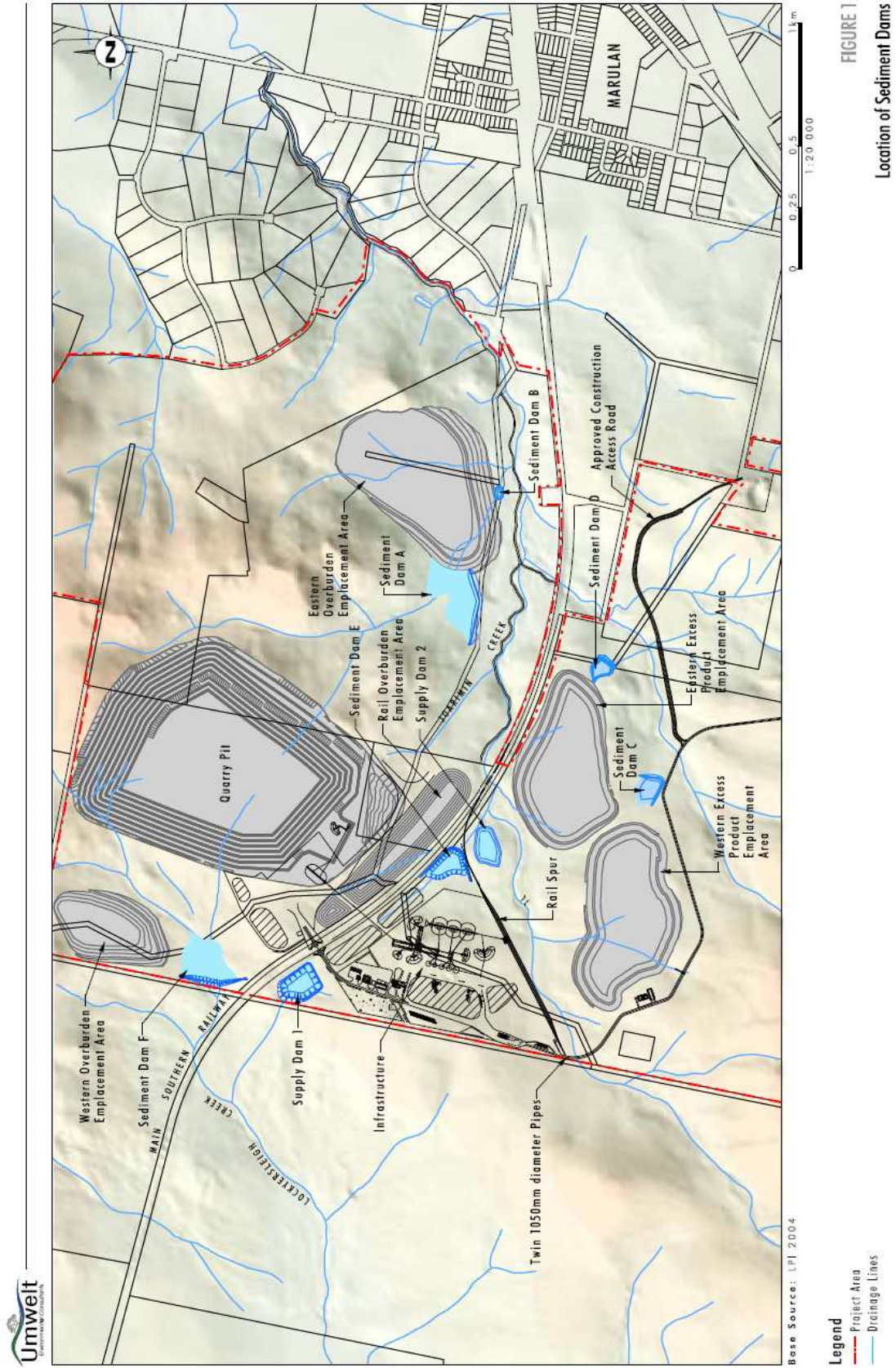
Base Source: LPI 2010, Holcim Australia (Aerial Photo March 2005)



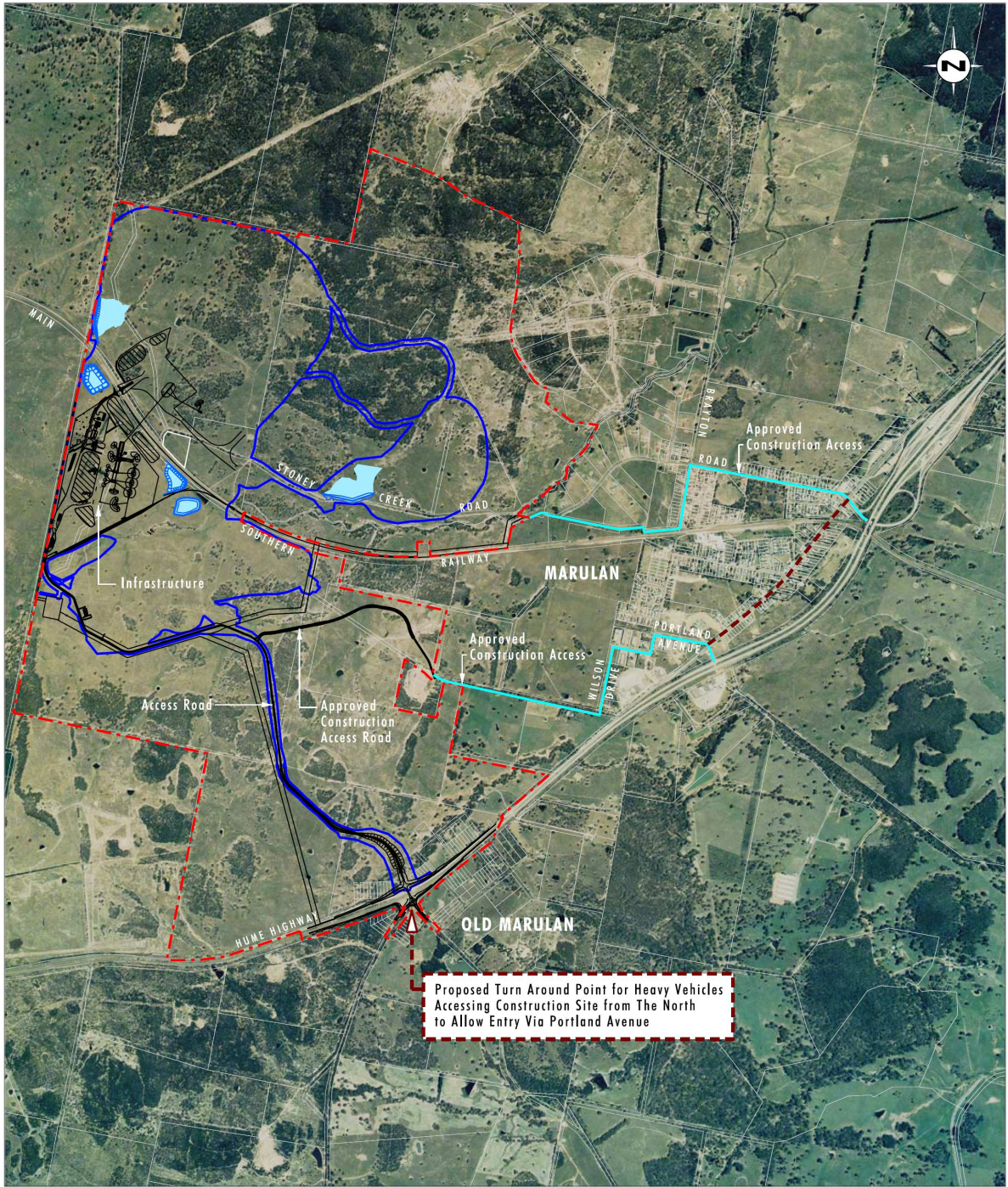
- Legend**
- Project Area
 - Infrastructure Area
 - Haul Road
 - Approved Disturbance Footprint
 - Modified Disturbance Footprint
 - Quarry Pit
 - Emplacement Area
 - Rehabilitated Area
 - Dam

FIGURE 3.3
Indicative Year 30 Quarry Plan

APPENDIX 4: LOCATION OF SEDIMENT DAMS



APPENDIX 5: CONSTRUCTION TRAFFIC ROUTES



Source: LPI 2004, Readymix Holdings Pty Ltd (Aerial Photo March 2005)



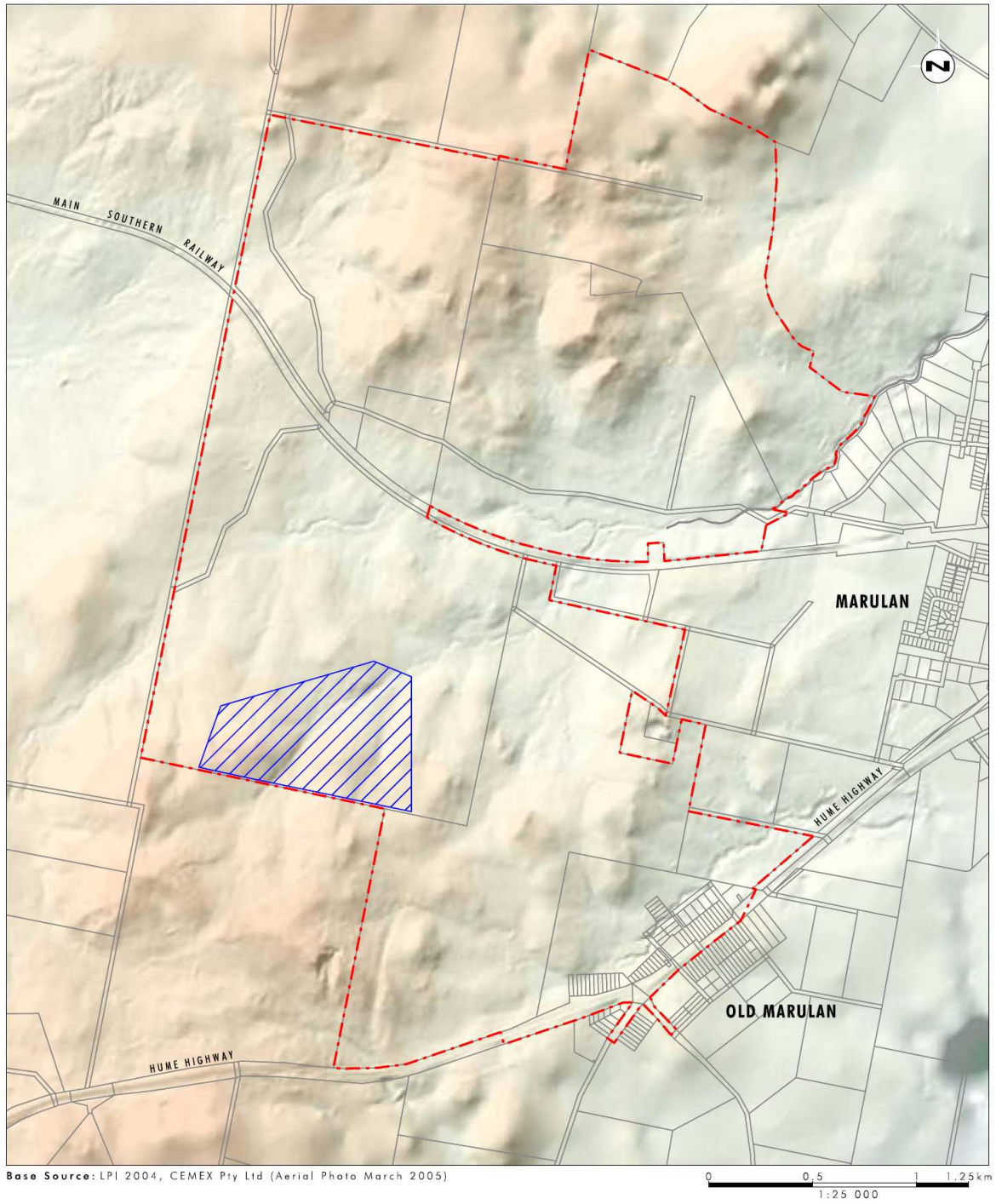
Legend

- - - Project Area
- Disturbance Footprint
- Approved Construction Access
- - - Proposed Construction Access

FIGURE 1

Construction Traffic Routes Through Marulan Township

APPENDIX 6: CULTURAL HERITAGE MANAGEMENT ZONE



Base Source: LPI 2004, CEMEX Pty Ltd (Aerial Photo March 2005)

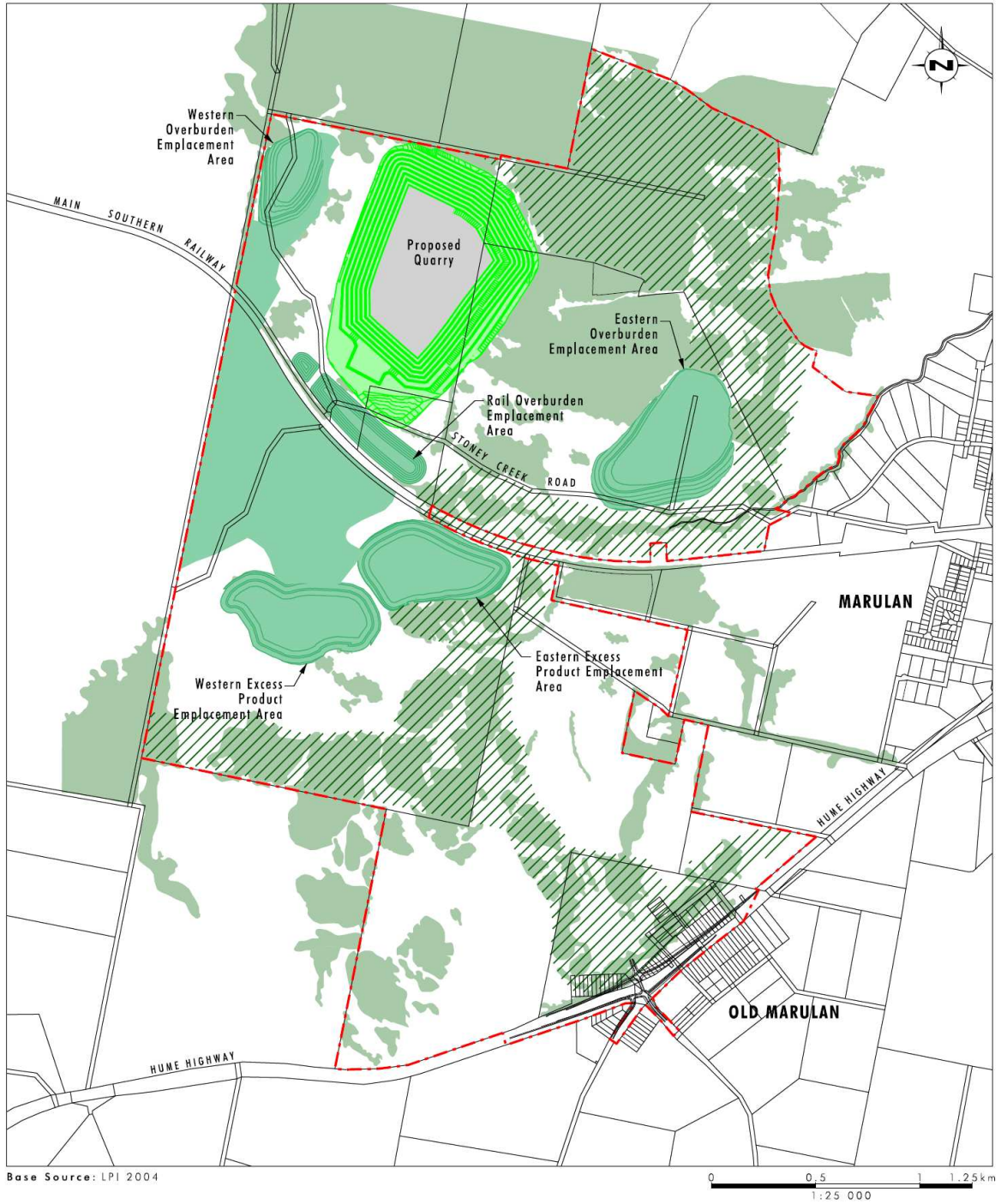
0 0.5 1 1.25 km
1:25 000

Legend

- Project Area
- Cultural Heritage Management Zone

FIGURE 2
Cultural Heritage
Management Zone

APPENDIX 8: CONCEPTUAL REHABILITATION PLAN



Legend

- Project Area
- Existing Vegetation
- Rehabilitated Area
- Rehabilitated Quarry Batters
- Assisted Natural Regeneration (Habitat Corridor Function Enhancement)

FIGURE 6.17
Year 30 Conceptual Final Rehabilitation