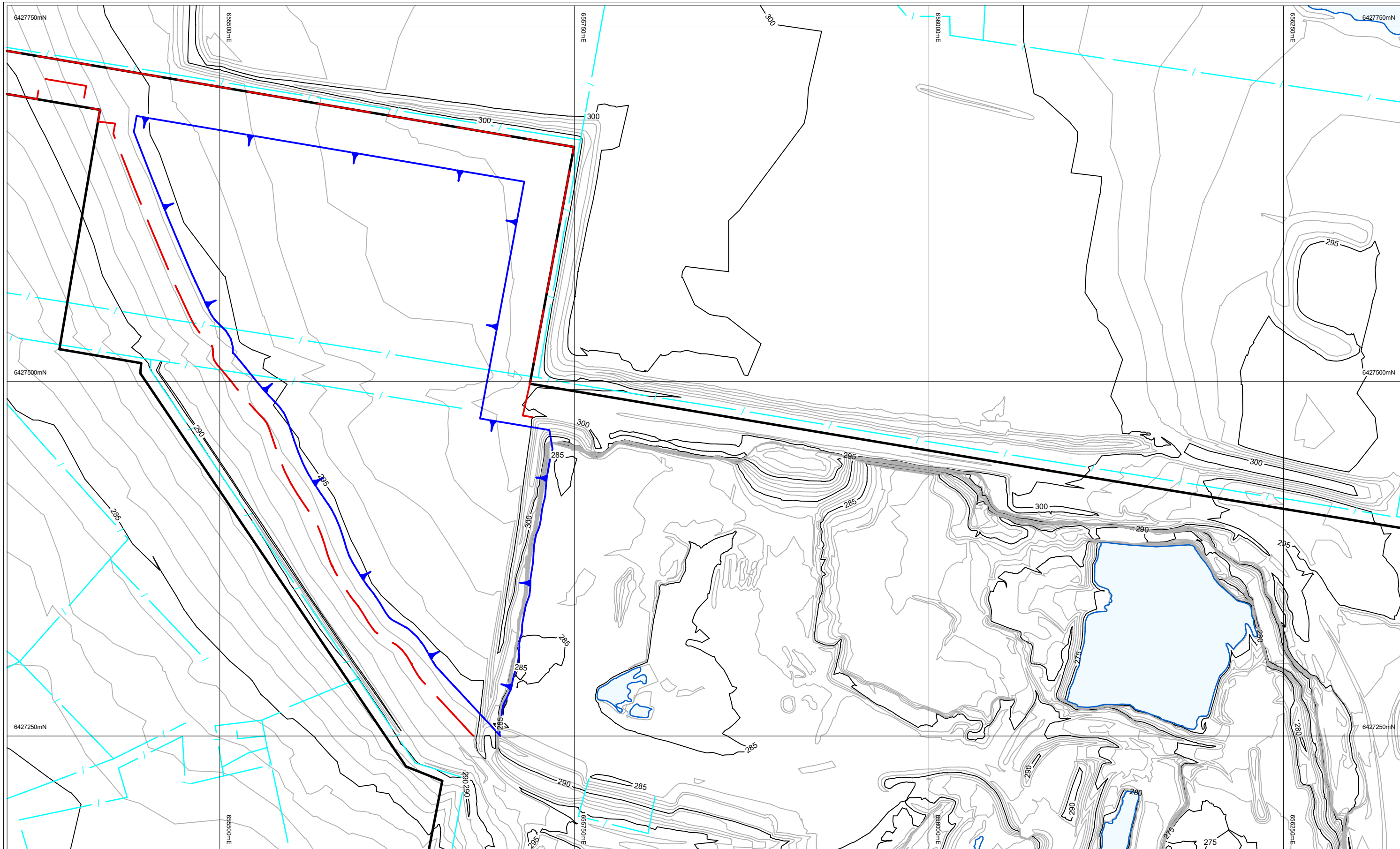




Appendix B

Stage plans






Australian Mine Design & Development Pty Ltd
 Brisbane Office
 4/46 Edward St, Brisbane
 Tel. +61 7 3012 9256
 Fax +61 7 3012 9284
 Sydney
 P.O.Box 381, Rozelle
 NSW 2039
 Tel. 0419 299 323

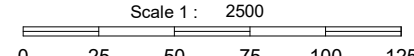
Australian Mine Design and Development Pty Ltd (AMDAD) uses its best endeavours to provide advice and designs which are practical, safe and environmentally sensitive, based on guidelines provided by experts in these areas. However, AMDAD are not experts in the areas of geotechnical engineering, safety and the environment. Prior to implementation of any of our advice or designs, we advise you to ensure that expert advice has been sought in these areas of geotechnical engineering, safety and the environment and that appropriate revisions to designs have been made to ensure the final designs as implemented do not pose a risk to the health and safety of any personnel, nor of impact on the environment.

This drawing, presenting a quarry plan based on design guidelines provided by Holcim or its third party specialist consultants, is approved for issue by AMDAD:-
 Chris Desoe RPEQ No. 05769

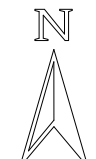
Legend

- Roads or Tracks
- RP Boundary
- Buildings or Plant
- Drainage
- Limit of Disturbance
- Proposed Extraction Limit

Scale 1 : 2500



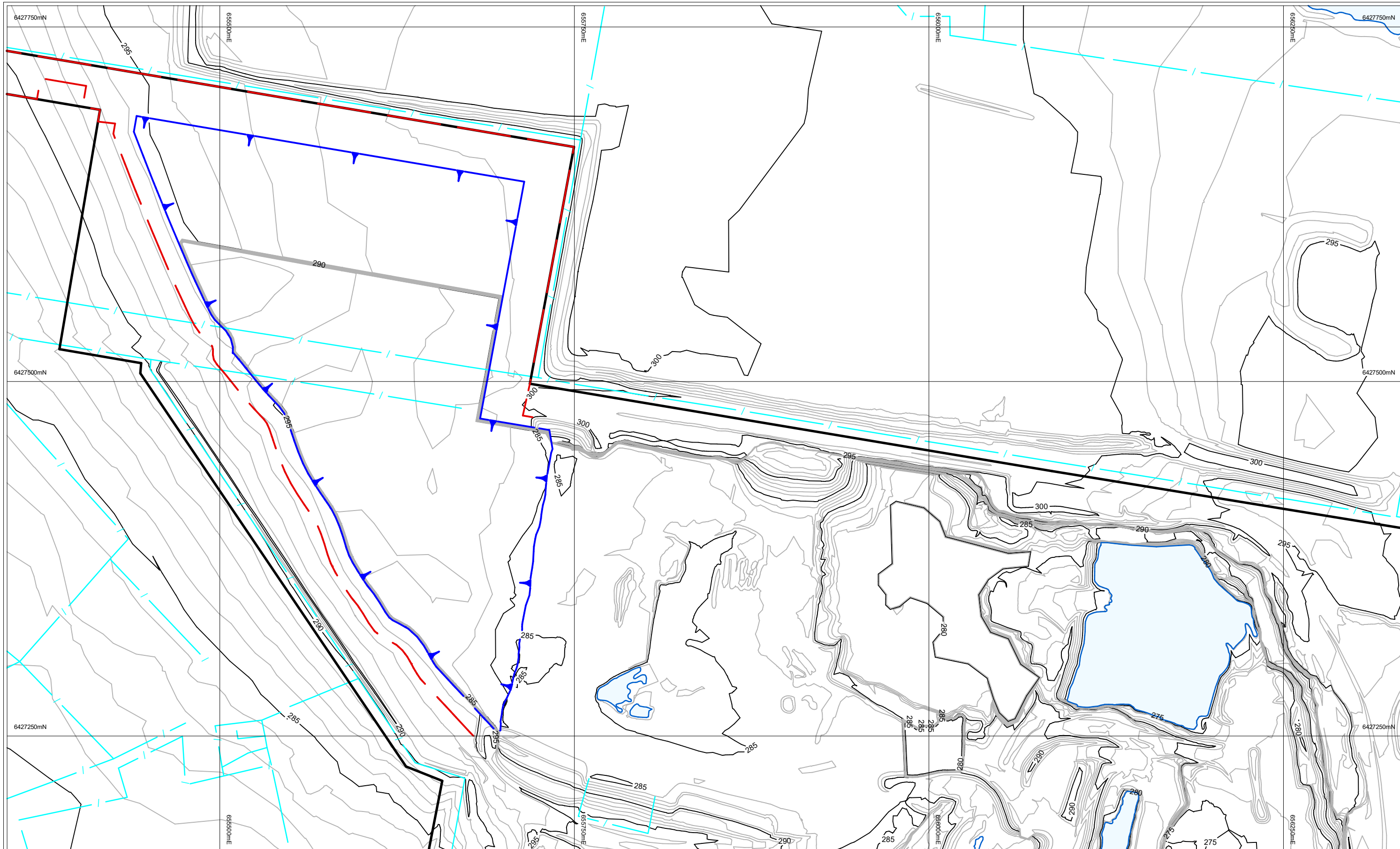
Coordinate System:
 Horizontal: MGA
 Vertical Datum: AHD




Dubbo Quarry

Cameron's Extension
 Current Topography
 Based on April 2019 Photogrammetry

Date: 06-Nov-20	Plan No.
-----------------	----------









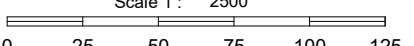

Australian Mine Design & Development Pty Ltd
 Brisbane Office
 4/46 Edward St, Brisbane
 Tel. +61 7 3012 9256
 Fax +61 7 3012 9284
 Sydney
 P.O.Box 381, Rozelle
 NSW 2039
 Tel. 0419 299 323

Australian Mine Design and Development Pty Ltd (AMDAD) uses its best endeavours to provide advice and designs which are practical, safe and environmentally sensitive, based on guidelines provided by experts in these areas. However, AMDAD are not experts in the areas of geotechnical engineering, safety and the environment. Prior to implementation of any of our advice or designs, we advise you to ensure that expert advice has been sought in these areas of geotechnical engineering, safety and the environment and that appropriate revisions to designs have been made to ensure the final designs as implemented do not pose a risk to the health and safety of any personnel, nor of impact on the environment.


This drawing, presenting a quarry plan based on design guidelines provided by Holcim or its third party specialist consultants, is approved for issue by AMDAD:-
 Chris Desoe RPEQ No. 05769

Legend

-  Roads or Tracks
-  RP Boundary
-  Buildings or Plant
-  Drainage
-  Limit of Disturbance
-  Proposed Extraction Limit

Scale 1 : 2500


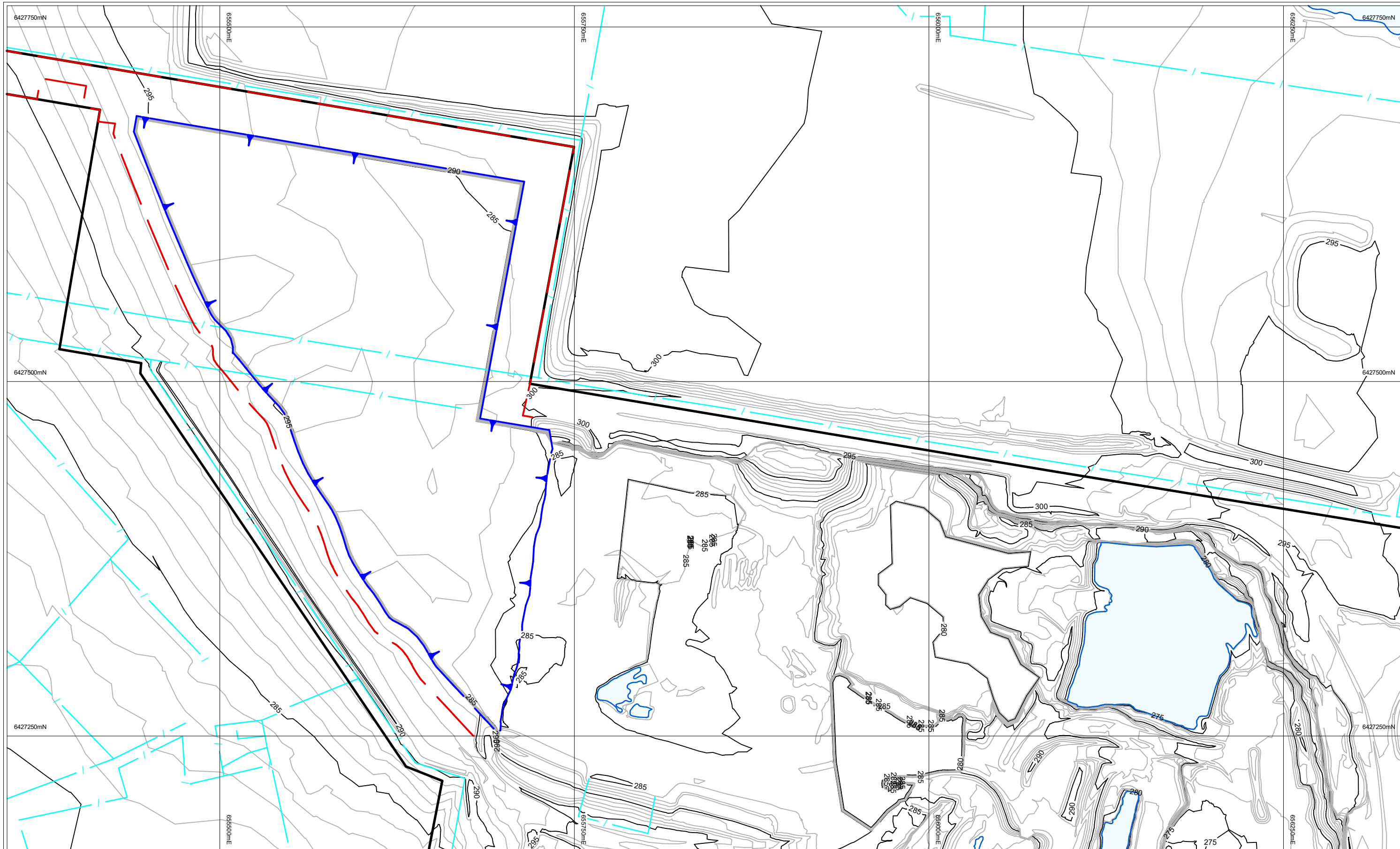
Coordinate System:
 Horizontal: MGA
 Vertical Datum: AHD




Dubbo Quarry

Cameron's Extension Design
Proposed Year 5 Development Plan

Date: 05-Nov-20	Plan No.
-----------------	----------



Australian Mine Design & Development Pty Ltd
 Brisbane Office
 4/46 Edward St, Brisbane
 Tel. +61 7 3012 9256
 Fax +61 7 3012 9284

Sydney
 P.O.Box 381, Rozelle
 NSW 2039
 Tel. 0419 299 323

Australian Mine Design and Development Pty Ltd (AMDAD) uses its best endeavours to provide advice and designs which are practical, safe and environmentally sensitive, based on guidelines provided by experts in these areas. However, AMDAD are not experts in the areas of geotechnical engineering, safety and the environment. Prior to implementation of any of our advice or designs, we advise you to ensure that expert advice has been sought in these areas of geotechnical engineering, safety and the environment and that appropriate revisions to designs have been made to ensure the final designs as implemented do not pose a risk to the health and safety of any personnel, nor of impact on the environment.

This drawing, presenting a quarry plan based on design guidelines provided by Holcim or its third party specialist consultants, is approved for issue by AMDAD:-
 Chris Desoe RPEQ No. 05769

Legend

- Roads or Tracks
- RP Boundary
- Buildings or Plant
- Drainage
- Limit of Disturbance
- Proposed Extraction Limit

Scale 1 : 2500

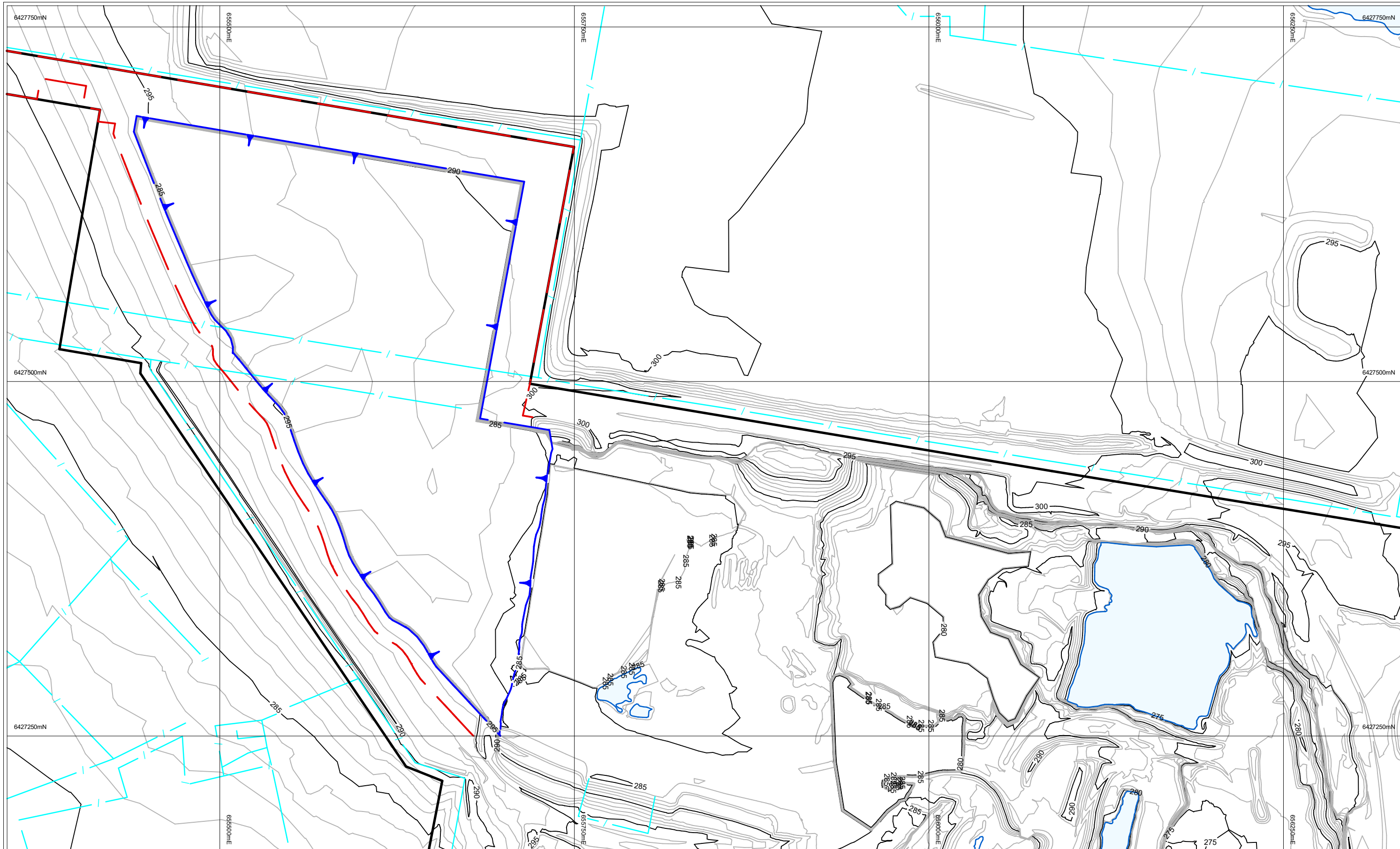
Coordinate System:
 Horizontal: MGA
 Vertical Datum: AHD



Dubbo Quarry

**Cameron's Extension Design
 Proposed Year 10 Development Plan**

Date: 05-Nov-20 Plan No.










Australian Mine Design & Development Pty Ltd
 Brisbane Office
 4/46 Edward St, Brisbane
 Tel. +61 7 3012 9256
 Fax +61 7 3012 9284

Sydney
 P.O.Box 381, Rozelle
 NSW 2039
 Tel. 0419 299 323

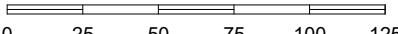
Australian Mine Design and Development Pty Ltd (AMDAD) uses its best endeavours to provide advice and designs which are practical, safe and environmentally sensitive, based on guidelines provided by experts in these areas. However, AMDAD are not experts in the areas of geotechnical engineering, safety and the environment. Prior to implementation of any of our advice or designs, we advise you to ensure that expert advice has been sought in these areas of geotechnical engineering, safety and the environment and that appropriate revisions to designs have been made to ensure the final designs as implemented do not pose a risk to the health and safety of any personnel, nor of impact on the environment.

This drawing, presenting a quarry plan based on design guidelines provided by Holcim or its third party specialist consultants, is approved for issue by AMDAD:-
 Chris Desoe RPEQ No. 05769


Legend

-  Roads or Tracks
-  RP Boundary
-  Buildings or Plant
-  Drainage
-  Limit of Disturbance
-  Proposed Extraction Limit

Scale 1 : 2500



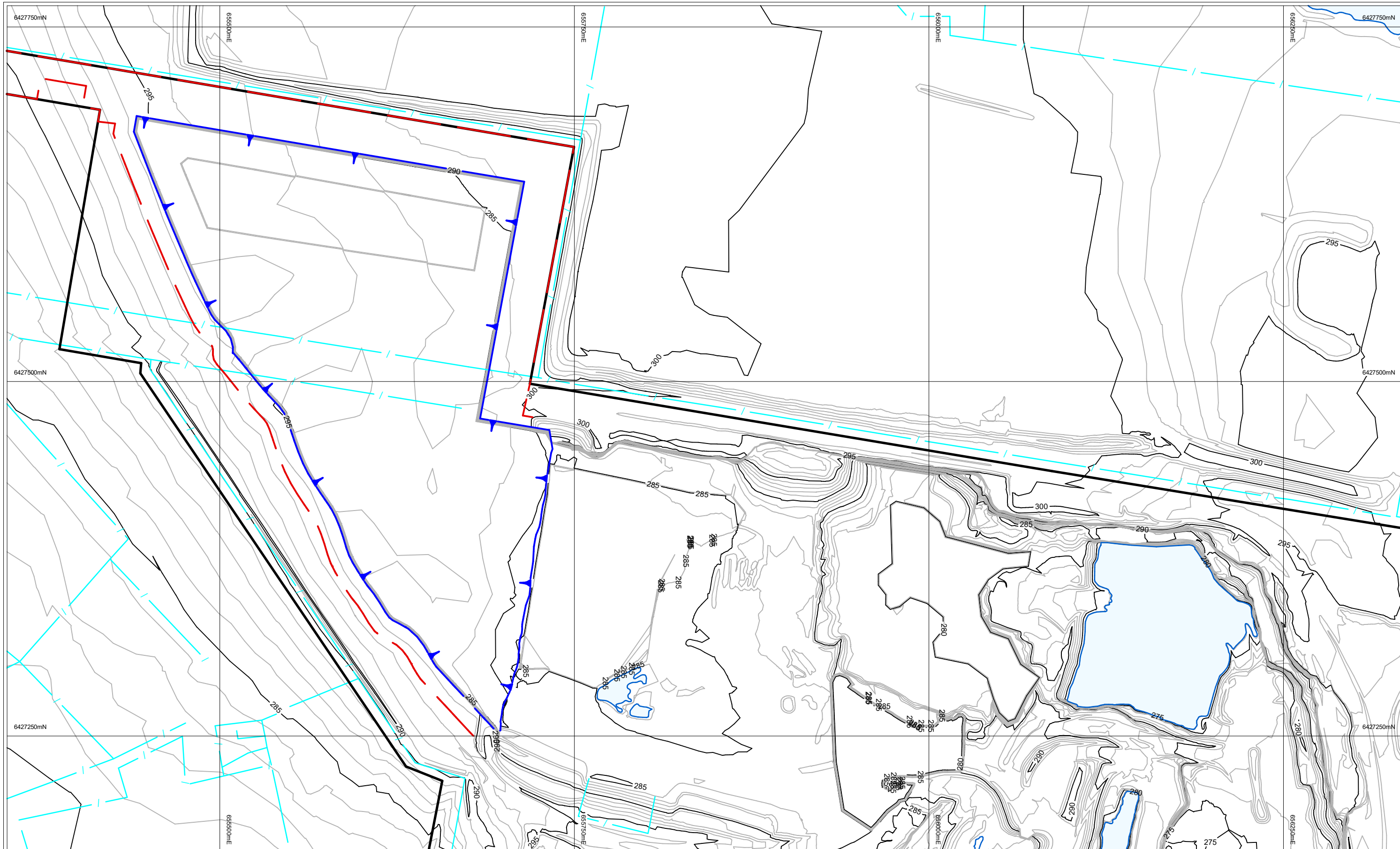
Coordinate System:
 Horizontal: MGA
 Vertical Datum: AHD




Dubbo Quarry

**Cameron's Extension Design
 Proposed Year 15 Development Plan**

Date: 06-Nov-20 Plan No.



Australian Mine Design & Development Pty Ltd
 Brisbane Office
 4/46 Edward St, Brisbane
 Tel. +61 7 3012 9256
 Fax +61 7 3012 9284

Sydney
 P.O.Box 381, Rozelle
 NSW 2039
 Tel. 0419 299 323

Australian Mine Design and Development Pty Ltd (AMDAD) uses its best endeavours to provide advice and designs which are practical, safe and environmentally sensitive, based on guidelines provided by experts in these areas. However, AMDAD are not experts in the areas of geotechnical engineering, safety and the environment. Prior to implementation of any of our advice or designs, we advise you to ensure that expert advice has been sought in these areas of geotechnical engineering, safety and the environment and that appropriate revisions to designs have been made to ensure the final designs as implemented do not pose a risk to the health and safety of any personnel, nor of impact on the environment.

This drawing, presenting a quarry plan based on design guidelines provided by Holcim or its third party specialist consultants, is approved for issue by AMDAD:-
 Chris Desoe RPEQ No. 05769

Legend

- Roads or Tracks
- RP Boundary
- Buildings or Plant
- Drainage
- Limit of Disturbance
- Proposed Extraction Limit

Scale 1 : 2500

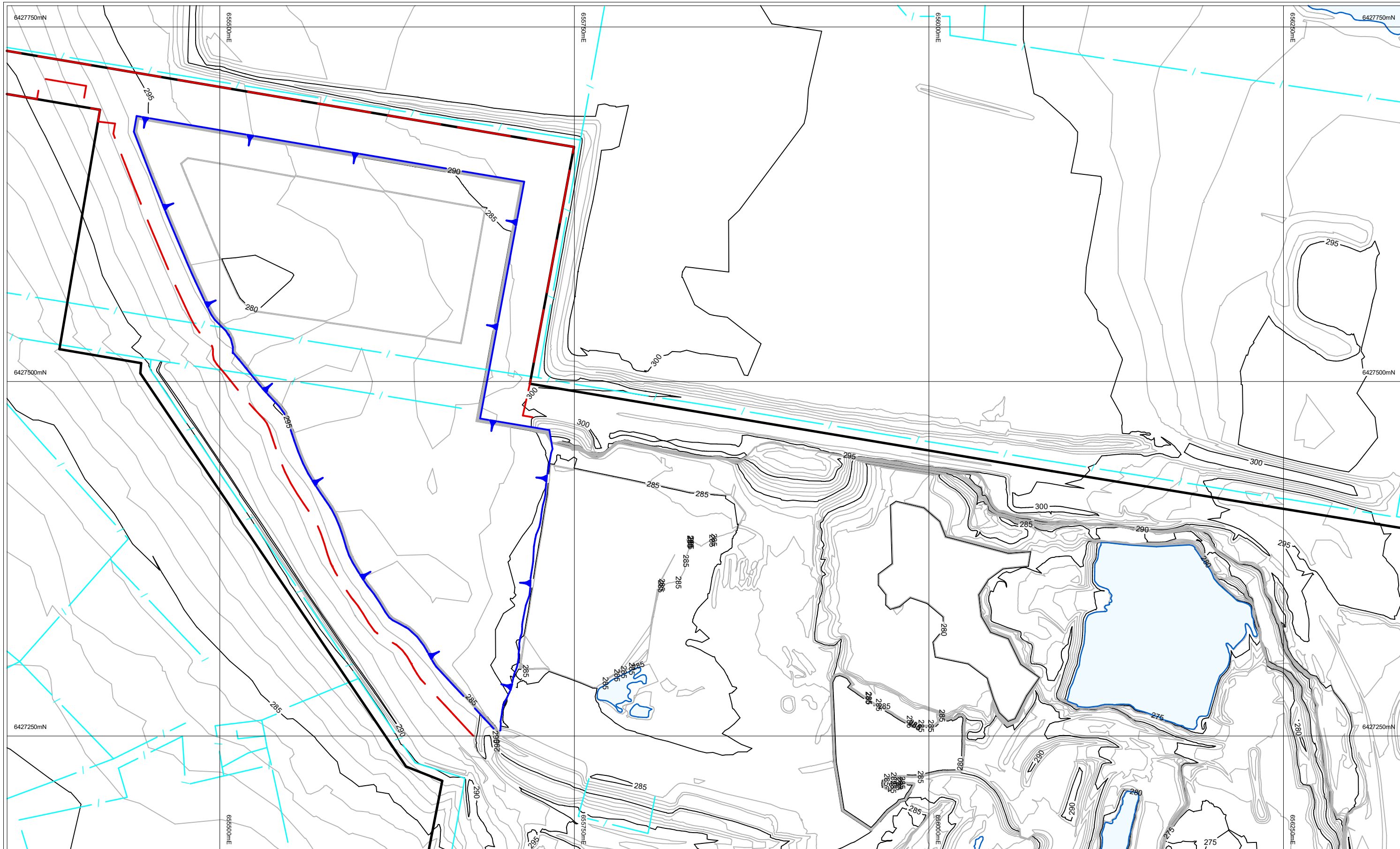
Coordinate System:
 Horizontal: MGA
 Vertical Datum: AHD



Dubbo Quarry

**Cameron's Extension Design
 Proposed Year 20 Development Plan**

Date: 06-Nov-20 Plan No.



Australian Mine Design & Development Pty Ltd
 Brisbane Office
 4/46 Edward St, Brisbane
 Tel. +61 7 3012 9256
 Fax +61 7 3012 9284

Sydney
 P.O.Box 381, Rozelle
 NSW 2039
 Tel. 0419 299 323

Australian Mine Design and Development Pty Ltd (AMDAD) uses its best endeavours to provide advice and designs which are practical, safe and environmentally sensitive, based on guidelines provided by experts in these areas. However, AMDAD are not experts in the areas of geotechnical engineering, safety and the environment. Prior to implementation of any of our advice or designs, we advise you to ensure that expert advice has been sought in these areas of geotechnical engineering, safety and the environment and that appropriate revisions to designs have been made to ensure the final designs as implemented do not pose a risk to the health and safety of any personnel, nor of impact on the environment.

This drawing, presenting a quarry plan based on design guidelines provided by Holcim or its third party specialist consultants, is approved for issue by AMDAD:-
 Chris Desoe RPEQ No. 05769

Legend

- Roads or Tracks
- RP Boundary
- Buildings or Plant
- Drainage
- Limit of Disturbance
- Proposed Extraction Limit

Scale 1 : 2500

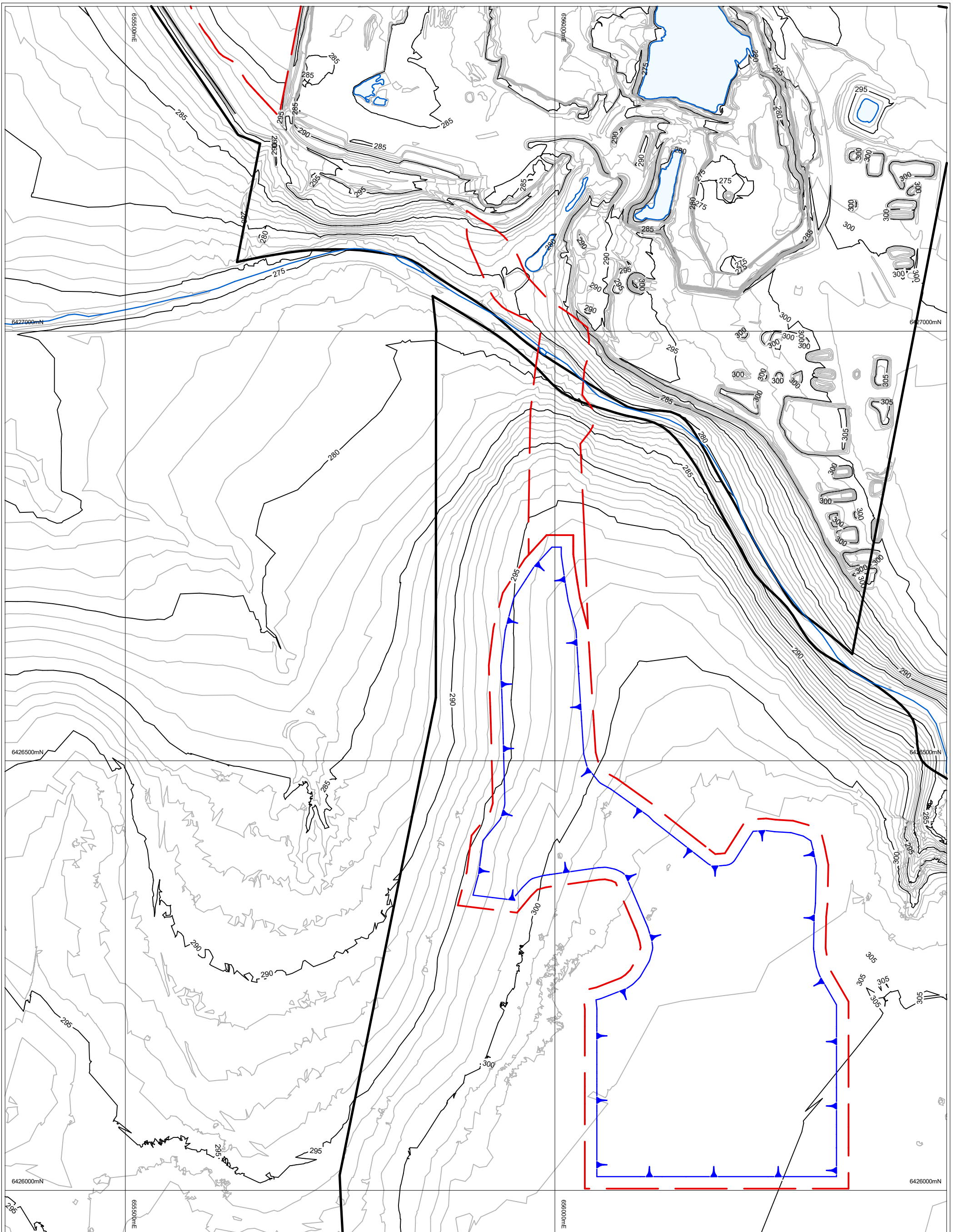
Coordinate System:
 Horizontal: MGA
 Vertical Datum: AHD



Dubbo Quarry

**Cameron's Extension Design
 Proposed Year 25 Development Plan**

Date: 06-Nov-20 Plan No.



Australian Mine Design & Development Pty Ltd
 Brisbane Office
 4/46 Edward St, Brisbane
 Tel. +61 7 3012 9256
 Fax +61 7 3012 9284

Legend

- Roads or Tracks
- RP Boundary
- Buildings or Plant
- Drainage Line
- Proposed Extraction Limit
- Limit of Disturbance



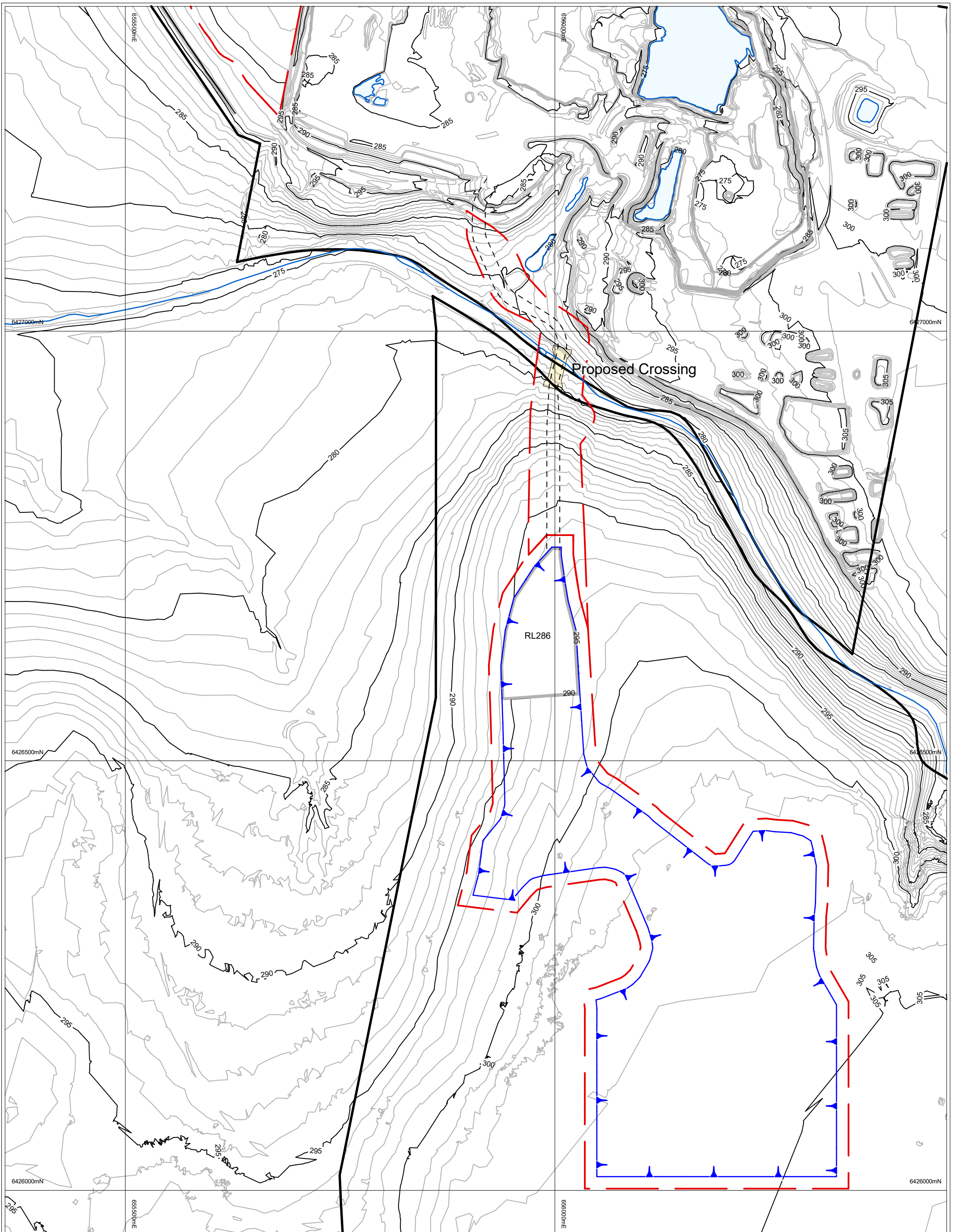
Scale @A3 1 : 4000
 0 40 80 120 160 200
 Vertical Datum: AHD Horizontal: MGA



Dubbo Quarry
 Current Topography
 Based on April 2019 Photogrammetry

Date: 24-Sep-20

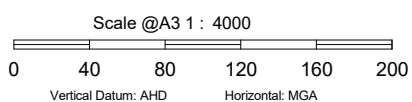
Plan No.



Australian Mine Design & Development Pty Ltd
 Brisbane Office
 4/46 Edward St, Brisbane
 Tel. +61 7 3012 9256
 Fax +61 7 3012 9284

Legend

- Roads or Tracks
- RP Boundary
- Buildings or Plant
- Drainage Line
- Proposed Extraction Limit
- Limit of Disturbance

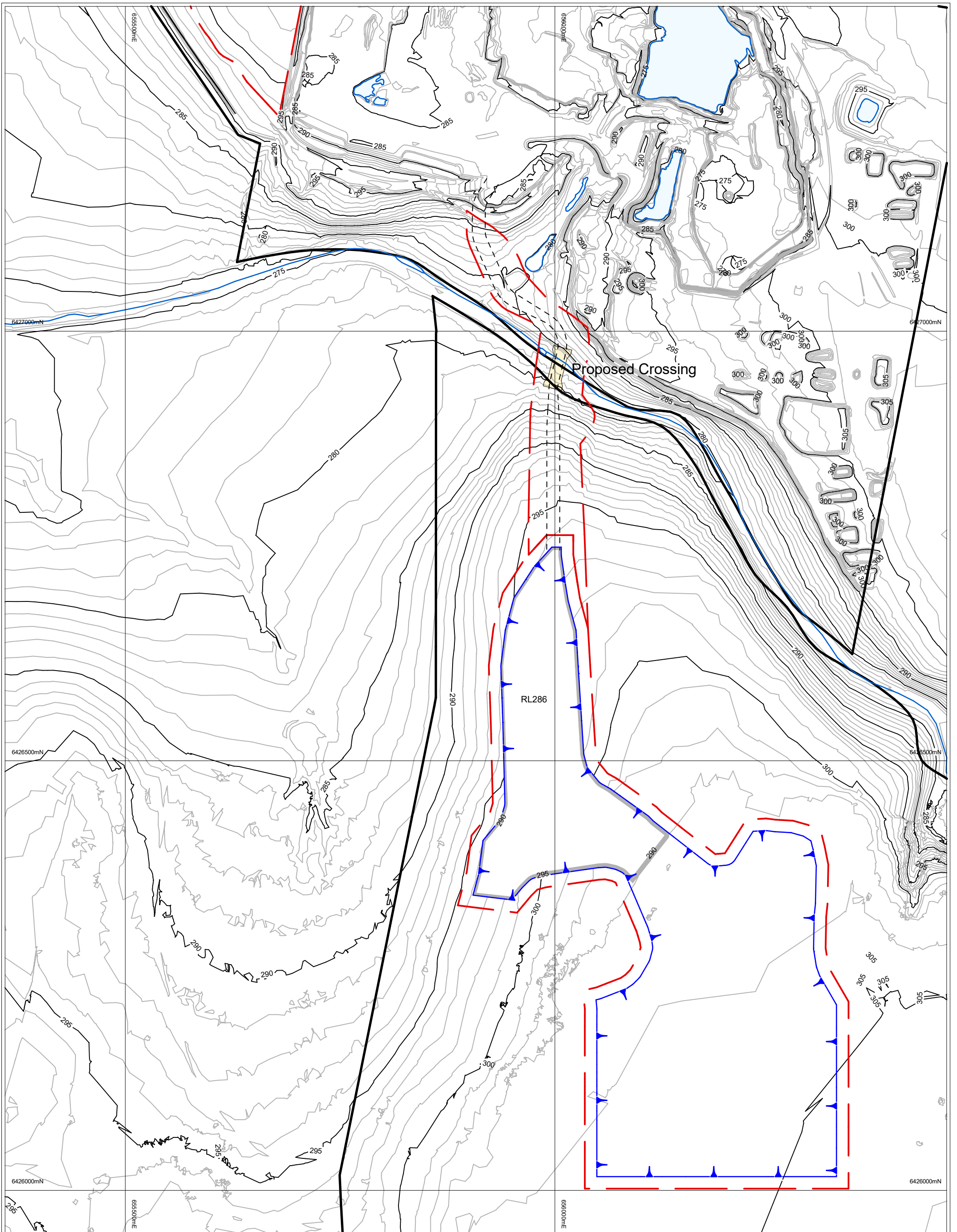


Dubbo Quarry

Skinner Extension Design
 Proposed Year 5 Development Plan
 DRAFT

Date: 25-Sep-20

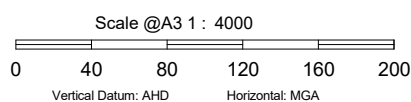
Plan No.



Australian Mine Design & Development Pty Ltd
 Brisbane Office
 4/46 Edward St, Brisbane
 Tel. +61 7 3012 9256
 Fax +61 7 3012 9284

Legend

- Roads or Tracks
- RP Boundary
- Buildings or Plant
- Drainage Line
- Proposed Extraction Limit
- Limit of Disturbance

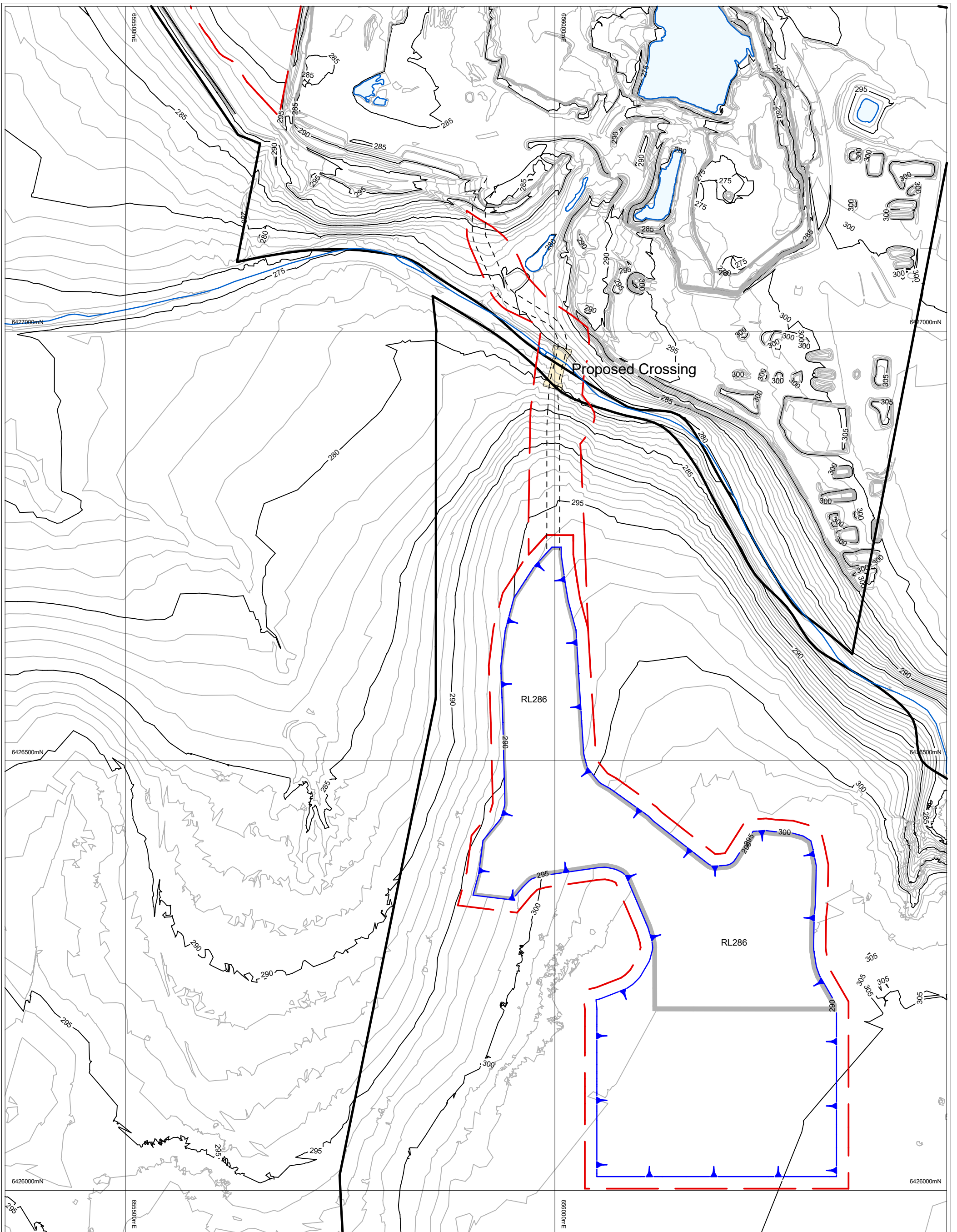


Dubbo Quarry

Skinner Extension Design
 Proposed Year 10 Development Plan
 DRAFT

Date: 25-Sep-20

Plan No.



Australian Mine Design & Development Pty Ltd
 Brisbane Office
 4/46 Edward St, Brisbane
 Tel. +61 7 3012 9256
 Fax +61 7 3012 9284

Legend

- Roads or Tracks
- RP Boundary
- Buildings or Plant
- Drainage Line
- Proposed Extraction Limit
- Limit of Disturbance



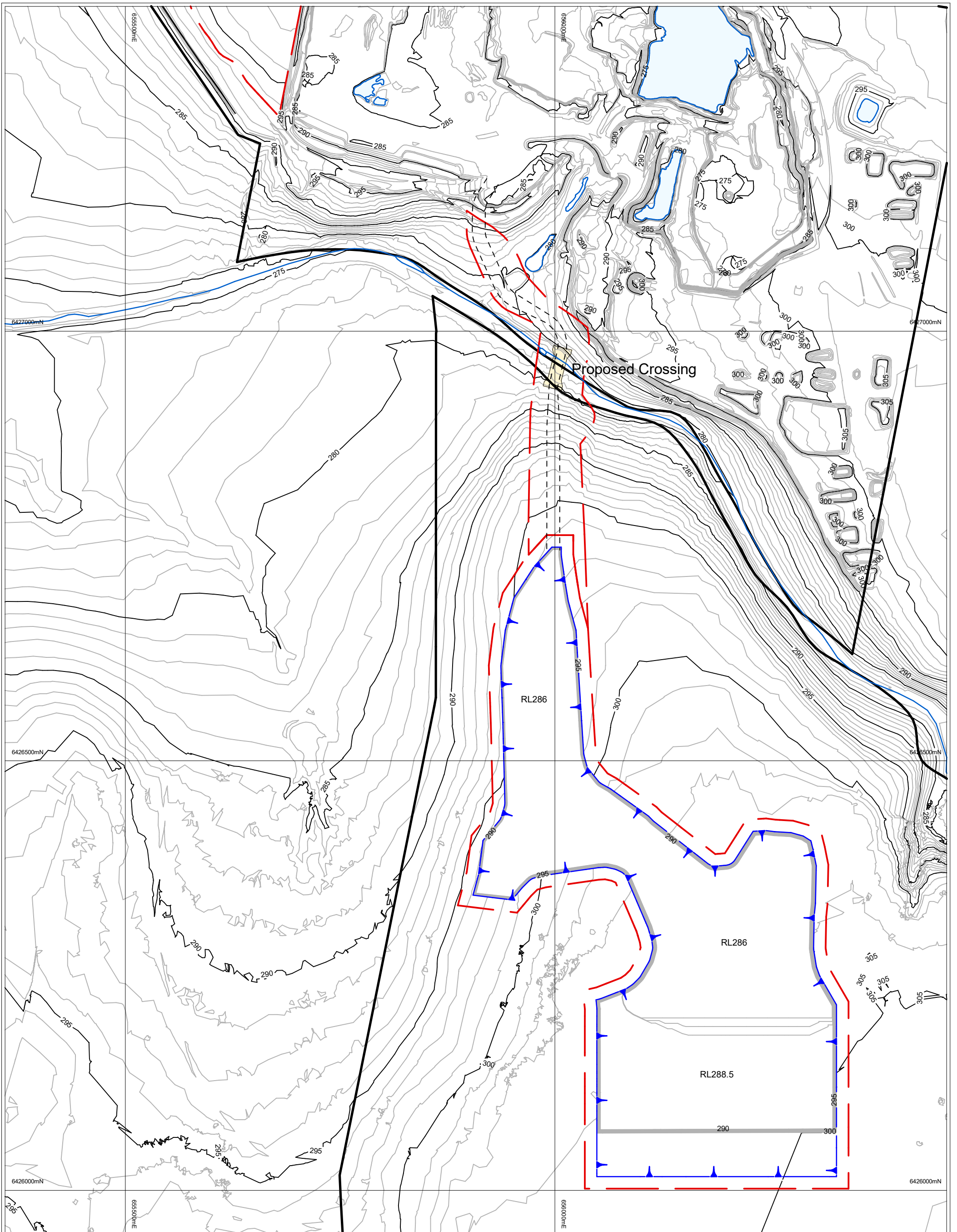
Scale @A3 1 : 4000
 0 40 80 120 160 200
 Vertical Datum: AHD Horizontal: MGA

Dubbo Quarry

Skinner Extension Design
 Proposed Year 15 Development Plan
 DRAFT

Date: 25-Sep-20

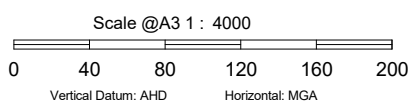
Plan No.



Australian Mine Design & Development Pty Ltd
 Brisbane Office
 4/46 Edward St, Brisbane
 Tel. +61 7 3012 9256
 Fax +61 7 3012 9284

Legend

- Roads or Tracks
- RP Boundary
- Buildings or Plant
- Drainage Line
- Proposed Extraction Limit
- Limit of Disturbance

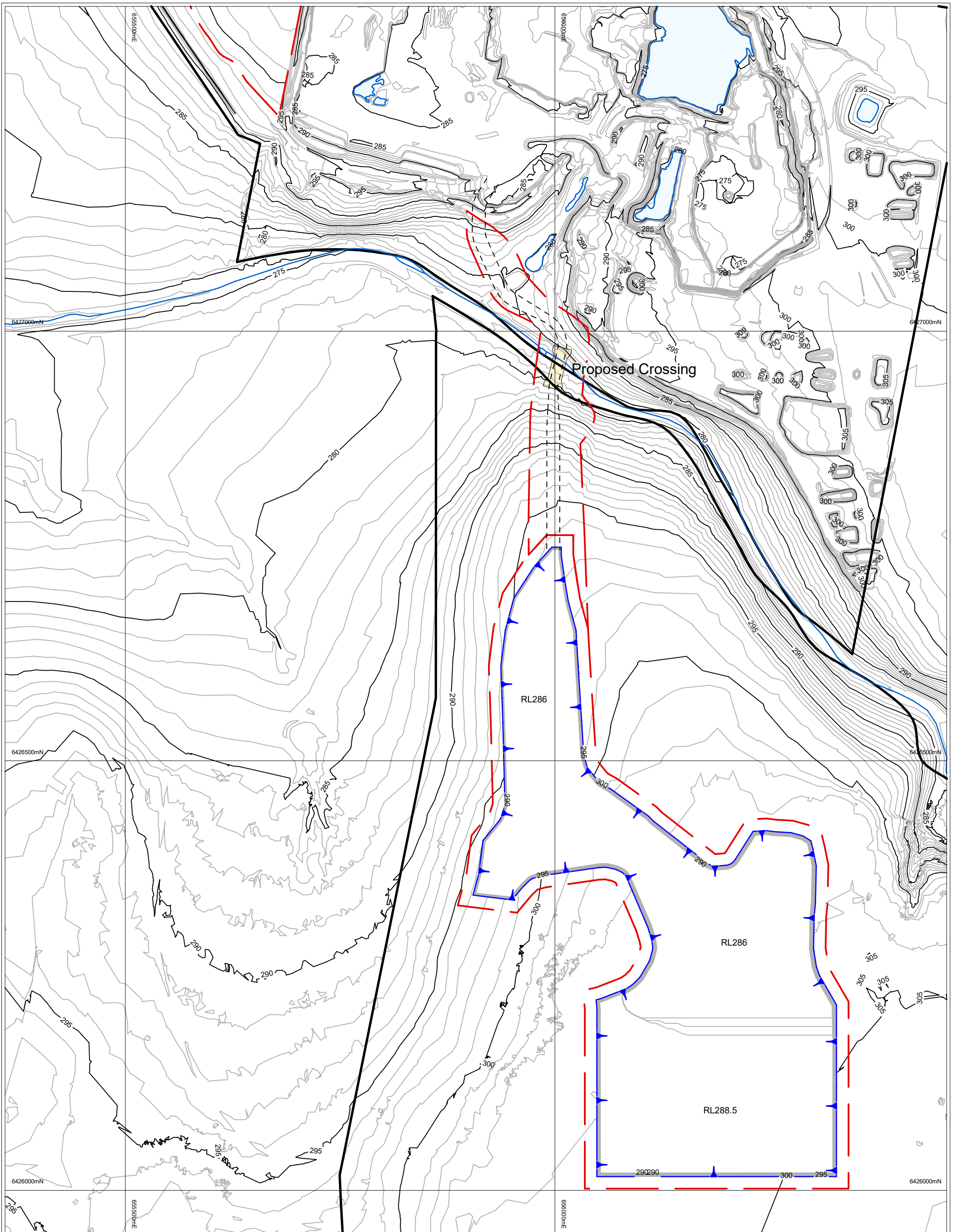


Dubbo Quarry

Skinner Extension Design
 Proposed Year 20 Development Plan
 DRAFT

Date: 25-Sep-20

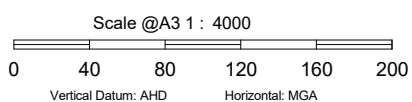
Plan No.



Australian Mine Design & Development Pty Ltd
 Brisbane Office
 4/46 Edward St, Brisbane
 Tel. +61 7 3012 9256
 Fax +61 7 3012 9284

Legend

- Roads or Tracks
- RP Boundary
- Buildings or Plant
- Drainage Line
- Proposed Extraction Limit
- Limit of Disturbance



Dubbo Quarry

Skinner Extension Design
 Proposed Year 25 Development Plan
 DRAFT

Date: 25-Sep-20

Plan No.