



**Strength.  
Passion**

**Performance.**

**Cooma Road Quarry  
Heritage Management Plan  
September 2019**

# TABLE OF CONTENTS

<b>1.0</b>	<b>Introduction</b> .....	<b>1</b>
1.1	Background.....	1
1.2	Project Description.....	1
1.3	Purpose and Scope .....	4
<b>2.0</b>	<b>Regulatory Requirements</b> .....	<b>4</b>
2.1	Development Consent .....	4
2.2	Statement of Commitments.....	5
2.3	Stakeholder Consultation Regarding this Document .....	5
2.3.1	Aboriginal Party Consultation and Participation .....	5
2.3.2	Council Consultation.....	6
<b>3.0</b>	<b>Baseline Data – EIS Heritage Assessment</b> .....	<b>6</b>
3.1	Aboriginal Archaeology .....	6
3.2	Historic Heritage.....	7
<b>4.0</b>	<b>Heritage Management Strategy</b> .....	<b>12</b>
4.1	Management of Known Sites .....	12
4.1.1	Moses Morley’s Lime Kiln Site .....	12
4.1.2	Aboriginal Archaeological Sites .....	12
4.2	Contingency Plan for Unpredicted Impacts to Heritage Items .....	13
4.2.1	Previously Unidentified Historic Heritage Objects.....	13
4.2.2	Previously Unidentified Aboriginal Archaeological/Cultural Heritage Items .....	13
4.2.3	Potential Human Skeletal Remains.....	13
4.3	Heritage Awareness Training.....	14
<b>5.0</b>	<b>Heritage Monitoring</b> .....	<b>16</b>
5.1	Moses Morley Lime Kiln .....	16
5.2	Cooma Quarry 1 and 2 .....	16
<b>6.0</b>	<b>Reporting</b> .....	<b>16</b>
6.1	External Reporting .....	16
6.2	Incident/Complaint Response.....	16
6.2.1	Incident Notification .....	16
6.2.2	Non-Compliances Notification.....	16
6.2.3	Adaptive Management .....	17
<b>7.0</b>	<b>Review and Improvement</b> .....	<b>17</b>
<b>8.0</b>	<b>Definitions</b> .....	<b>18</b>
<b>9.0</b>	<b>Roles and Responsibilities</b> .....	<b>18</b>
<b>10.0</b>	<b>References</b> .....	<b>19</b>

<b>Appendix 1 – General Management Plan Requirements from Development Consent .....</b>	<b>20</b>
<b>Appendix 2 – Stakeholder Consultation.....</b>	<b>21</b>

## TABLES

Table 1	Document Control .....	iii
Table 2	Development Consent Conditions .....	4
Table 3	Statement of Commitments .....	5
Table 4	Terminology Utilised Within the HMP .....	18
Table 5	Roles and Responsibilities .....	18

## FIGURES

Figure 1-1	Locality Map.....	2
Figure 1-2	Cooma Road Quarry Continued Operations Project.....	3
Figure 3-1	AHIMS Previously Registered Sites .....	8
Figure 3-2	Queanbeyan LEP 2012 Listed Items.....	9
Figure 4-1	Location of Sites Cooma Quarry 1 & 2 .....	15

**Table 1 Document Control**

Version No.	Review Date	Reviewed By	Reviewer Position	Changes Made	Approved
1	27/03/2014	Holcim Australia	N/A	Development of Plan	Holcim Australia
2	30/07/2019	Shilpa Shashi	Planning and Environment Coordinator NSW / ACT	General update in accordance with Development Consent	Submitted to DPIE
3	24/09/2019	Shilpa Shashi	Planning and Environment Coordinator NSW / ACT	Update with Department comments	Submitted to DPIE

## 1.0 Introduction

### 1.1 Background

Holcim (Australia) Pty Ltd (Holcim Australia) operates Cooma Road Quarry, an existing hard rock quarry located approximately 6 kilometres south of Queanbeyan New South Wales (NSW) (refer to **Figure 1-1**). Cooma Road Quarry has been operating at the site since 1959. The previous Development Consent for Cooma Road Quarry was granted on 26 October 1995 and expired in October 2015. To enable continued quarrying operations, Holcim Australia sought a Development Consent under Part 4 of the *Environmental Planning and Assessment Act 1979* (EP&A Act) for an extension of the approved quarry life until 31 October 2035. The Cooma Road Quarry Development Consent (SSD\_5109) (Development Consent) was granted on 27 September 2013 by the NSW Minister for Planning and Infrastructure. Modification 1 was approved by the Department of Planning, Industry and Environment (DPIE) in August 2016 and included the addition of the importation of Virgin Excavated Natural Material (VENM) to be utilised for backfilling and progressive rehabilitation of the terminal quarry faces. Modification 2 was approved in April 2019 and included the addition of the importation of Excavated Natural Material (ENM).

The Development Consent allows for continued operations of the existing Cooma Road Quarry which will enable the extraction of additional hard rock resources within the approved extraction area (refer to **Figure 1-2**).

Holcim Australia is committed to implementing continued quarrying operations in the context of updated and contemporary environmental management requirements. This Heritage Management Plan (HMP) has been prepared in accordance with Condition 21 of Schedule 3 of the Development Consent. The HMP condition includes requirements for both Historic Heritage and Aboriginal Cultural Heritage and as such this HMP includes management requirements for both aspects.

### 1.2 Project Description

The Development Consent provides for the following:

- extraction of the remaining resources within the existing approved quarry pit area;
- extension of the approved extraction boundary to the north covering an area of approximately 3.5 hectares;
- increasing the maximum annual production limit from 1 Mtpa to 1.5 Mtpa;
- allowance to receive quarry materials from other sites for crushing and screening (as required) and then sale. Total product (including from both material quarried from the site and from materials imported to the site) will be maintained within the total production limit of 1.5 Mtpa;
- allowance to receive VENM and ENM products to be used for back filling and progressive rehabilitation of terminal quarry faces in accordance with the Development Consent and quarry rehabilitation objectives;
- relocation of the existing workshop, truck parking and temporary stockpiles;
- addition of a mobile pug mill; and
- recycling of clean concrete on site for re-use as product.

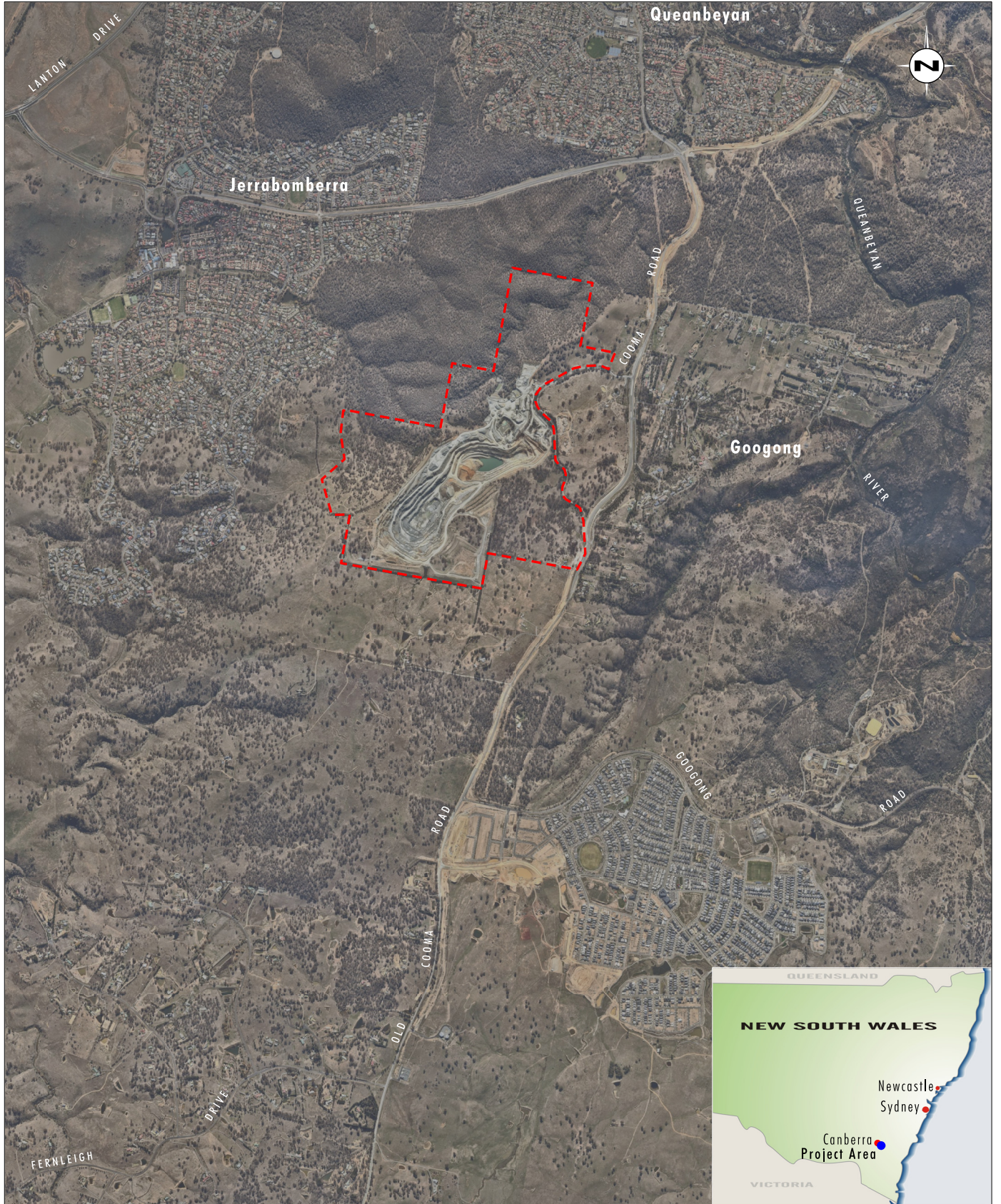


Image Source: Nearmap (May 2019)  
 Data Source: Holcim (2012), NSW LPI (2019)

**Legend**

Approved Project Area

**FIGURE 1.1**  
**Locality Map**

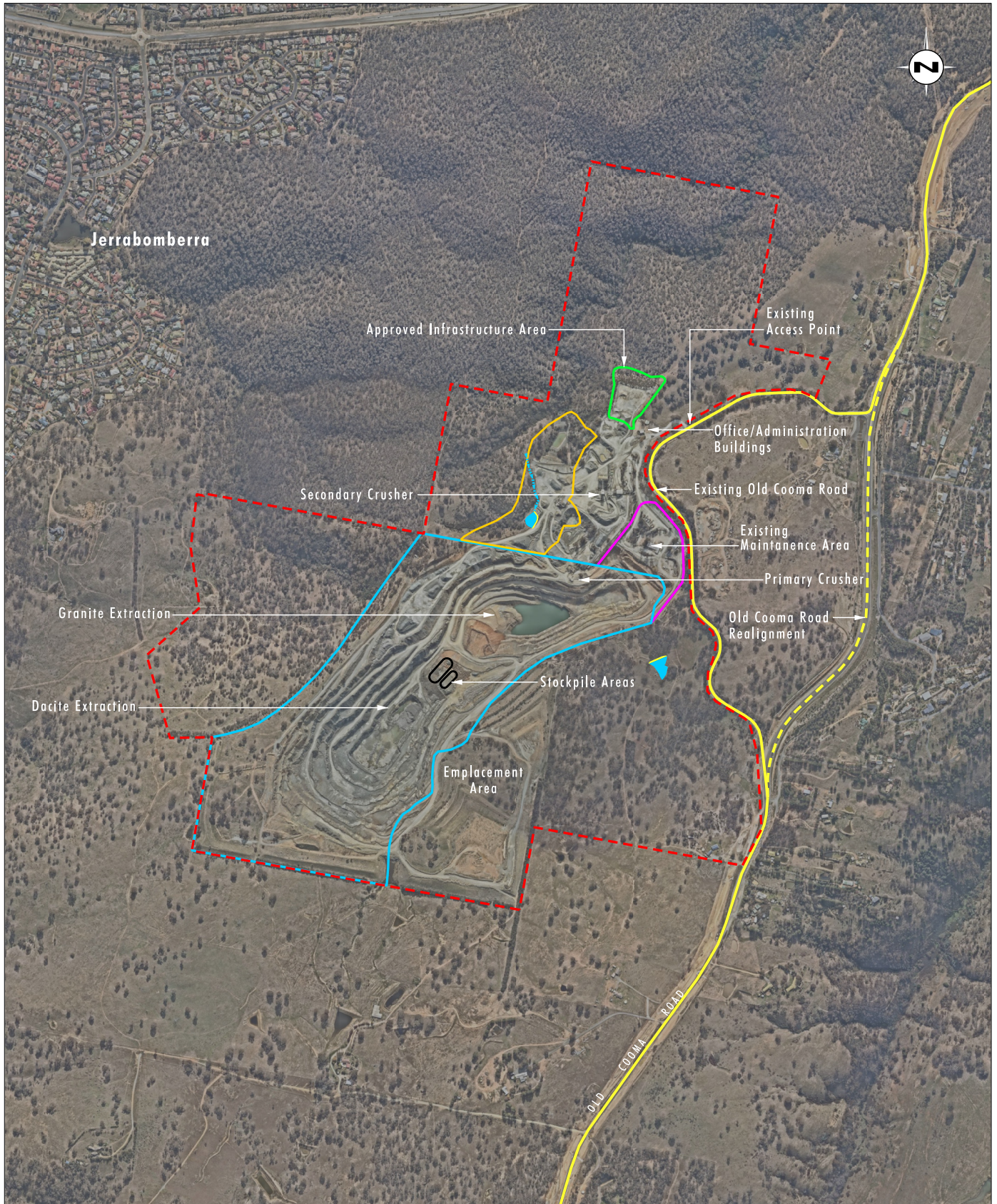
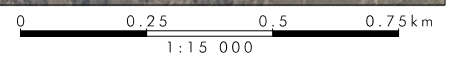


Image Source: Nearmap (May 2019)  
 Data Source: Holcim (2012)



**Legend**

- - - Approved Project Area
- Approved Extraction Area
- Approved Additional Extraction Area
- Approved Disturbance Area - Workshop
- Approved Disturbance Area - Overburden Emplacement
- Approved Dam
- ⋯ Clean Drain

**FIGURE 1.2**  
**Cooma Road Quarry**  
**Continued Operations Project**

## 1.3 Purpose and Scope

The purpose of this HMP is to provide a description of the measures to be implemented by Holcim Australia to:

- manage and protect Aboriginal heritage values at Cooma Road Quarry and to detail the monitoring and management measures associated with Aboriginal archaeological sites; and
- manage and protect known historical heritage values in the vicinity of Cooma Road Quarry including the Moses Morley Kiln Site, and to detail the monitoring and management measures associated with the site.

This HMP addresses the historic heritage and Aboriginal cultural heritage management requirements associated with Cooma Road Quarry operations. An outline of the Development Consent conditions and Statement of Commitments relevant to this plan is provided in **Sections 2.1.1** and **2.1.2** respectively, including a checklist of where each condition has been addressed within this document.

The plan outlines the control measures to be implemented as part of the continued operations at Cooma Road Quarry to minimise the potential cultural and heritage related impacts.

## 2.0 Regulatory Requirements

The objective of this HMP is to address the requirements of the relevant approval conditions and the Statement of Commitments. These are documented below with reference to the relevant section of the HMP in which they are addressed.

### 2.1 Development Consent

The Development Consent was assessed under the EP&A Act (1979). Approval for the project was granted by the NSW Planning and Infrastructure (P&I) Director-General on 27 September 2013. The requirement for this HMP arises from Condition 21 of Schedule 3 of the Development Consent. **Table 2** provides the relevant approval conditions and identifies where these are addressed within the document.

**Table 2 Development Consent Conditions**

Approval Condition	Section Addressed
21. The Applicant must prepare a Heritage management Plan for the development to the satisfaction of the Secretary. This plan must:	
(a) be prepared in consultation with Aboriginal Stakeholders for matters relating to Aboriginal heritage values and Council for matters relating to non-Aboriginal heritage;	<b>Section 2.3</b>
(b) be submitted to the Secretary for approval within 6 months of the date of this consent;	Entire plan
(c) describe the measures that would be implemented for: <ul style="list-style-type: none"> <li>• monitoring, maintaining and protecting the Moses Morley's Lime Kiln site;</li> </ul>	<b>Section 4.1.1,</b> <b>Section 5.0</b>
<ul style="list-style-type: none"> <li>• managing the discovery of any human remains or previously unidentified heritage objects on site;</li> </ul>	<b>Section 4.2.3</b>
<ul style="list-style-type: none"> <li>• ensuring ongoing consultation with Aboriginal stakeholders in the conservation and management of any Aboriginal cultural heritage values on site; and</li> </ul>	<b>Section 2.3.1</b> <b>Section 4.1.2</b> <b>Section 4.2.2</b> <b>Section 4.2.3</b>
<ul style="list-style-type: none"> <li>• protecting sites identified adjacent to the development.</li> </ul>	<b>Section 4.1.2</b>

Management controls for potential heritage impacts associated with quarrying and ancillary activities are provided in **Section 4.0**. Heritage monitoring to be undertaken is outlined in **Section 5.0**. Additional general requirements of all Environmental Management Plans are included in Condition 2 of Schedule 5 of the Development Consent and are provided in **Appendix 1**.

## 2.2 Statement of Commitments

The Statement of Commitments relevant to the HMP, and where they are addressed in this document, is detailed in **Table 3**.

**Table 3 Statement of Commitments**

<b>Commitment</b>	<b>Section Addressed</b>
<b>Aboriginal Heritage</b>	
5. All Holcim Australia employees and contractors accessing Cooma Road Quarry will be made aware of the presence of archaeological sites at Cooma Quarry 1 and Cooma Quarry 2, and the need to avoid impact on these sites.	<b>Sections 4.1.2 and 4.3</b>
6. Cooma Quarry 2 will be fenced during the construction phase to avoid any unintended impacts to the site.	<b>Section 4.1.2</b>
7. Consultation with local Aboriginal community representatives will be undertaken to develop a culturally appropriate ongoing management strategy to avoid unintended impacts of Cooma Quarry 1 and Cooma Quarry 2.	<b>Section 2.3.1</b>
<b>Historic Heritage</b>	
8. An exclusion zone of at least 20 metres will be established around the Moses Morley's Lime Kiln site and associated buildings during the construction of the Eastern Dam.	<b>Section 4.1.1</b>
9. The existing fence around the Moses Morley's Lime Kiln site and associated buildings will be maintained and the opportunity for extending the fencing out to include the exclusion zone will be investigated.	<b>Section 4.1.1</b>
10. Vegetation within the fenced area of the Moses Morley Lime Kiln site will be managed to limit the adverse impacts on the kiln site associated with vegetation growth.	<b>Section 4.1.1</b>
11. Holcim Australia will inspect the physical condition of the Moses Morley's Lime Kiln site on a 6-monthly basis and compare the condition with the photographs contained in the EIS. The results of these inspections will be reported in the site's Annual Review.	<b>Section 4.1.1</b>
12. Prior to any blasting or construction activities, photographs/archival recording of the Moses Morley's Lime Kiln site will be undertaken in accordance with the Heritage Branch, OEH guidelines <i>Photographic Recording of Heritage Items Using Film or Digital Capture</i> (2006). The photographic/archival record will be updated every five years until the cessation of quarrying activities.	<b>Section 4.1.1</b>
13. Holcim Australia will make good/repair any damage to the Moses Morley's Lime Kiln site which occurs due to Cooma Road Quarry operations. Any repairs will be undertaken in a suitable manner using appropriate fabric and by an appropriately skilled heritage professional.	<b>Section 4.1.1</b>

## 2.3 Stakeholder Consultation Regarding this Document

An overview of the consultation undertaken in the development of this plan is included below. DPIE advised on 7 August 2019 that the update of this version of the management plan could occur without the need to consult with nominated agencies in the Development Consent.

### 2.3.1 Aboriginal Party Consultation and Participation

As discussed in the *Cooma Road Quarry Continued Operations: Aboriginal Archaeology Due Diligence Report* (Umwelt 2012a), Holcim Australia and the Ngambri Elders/Ngambri Local Aboriginal Land Council (NLALC) have a well-established working relationship and a Memorandum of Understanding in place, and therefore NLALC were involved in ongoing consultation for the Cooma Road Quarry Continued Operations



Project in 2012. Members of the NLALC, who are also representatives of the Ngambri Elders, were present during the due diligence inspections undertaken for the project.

The previous version of this HMP was sent to NLALC on 24 February 2014 for review and cultural input. NLALC responded on 4 March 2014 with minor changes to the document requested. There were no objections to the management strategy in the HMP (refer to **Appendix 2**).

The current HMP revision has been undertaken to satisfy the requirements of the Mod 2 approval. This approval does not involve any substantive change in the quarry footprint or potential for impacts to Aboriginal cultural heritage and therefore does not require any substantive change in the content of the HMP.

Holcim Australia undertake ongoing consultation with the local Aboriginal community and have committed to continue to consult with the Ngambri Elders/Ngambri Local Aboriginal Land Council (NLALC) throughout the life of the project.

### **2.3.2 Council Consultation**

A copy of the previous version of this HMP was provided to Queanbeyan City Council for comment on 11 March 2014. Queanbeyan City Council provided a letter on 25 March 2014 providing comment on the Draft HMP. The comments provided by Queanbeyan City Council were addressed in the development of the previous version of this document (refer to **Appendix 2**).

## **3.0 Baseline Data – EIS Heritage Assessment**

### **3.1 Aboriginal Archaeology**

A search of the OEH Aboriginal Heritage Information Management System (AHIMS) register undertaken on 25 July 2019 identified that there 31 previously recorded Aboriginal archaeological sites within the search area (MGA E700460-703650, N6079320-6082380). The location of these sites is shown in **Figure 3-1**. As shown in **Figure 3-1**, the majority of these sites are located outside the Project Area. Four site records are located along Cooma Road (AHIMS 57-2-0630, 57-2-0626 and 57-2-0627 and 57-2-0629) but are duplicate records and represent only two sites. These sites are not subject to impact by the approved project. Two additional sites (AHIMS 57-2-0880, Cooma Quarry 1 and 57-2-0881, Cooma Quarry 2) were identified as a result of the previous assessment undertaken for the project, as discussed below. Cooma Quarry 1 and 2 can be seen on **Figure 4.1**.

A large portion of the Project Area is previously disturbed land, with only small areas of substantially unmodified landscape. Previous ground disturbance works in the Project Area include vegetation clearance, erosion, as well as quarrying, importing fill, bulk earthmoving and road construction in the modified areas. Within the existing quarried areas, the potential for subsurface artefacts in the modified areas is nil as all topsoil (and any artefacts it may have contained), has been removed.

The currently approved disturbance footprint was the subject of an assessment was undertaken by Umwelt (Australia) Pty Ltd (Umwelt) to determine the Aboriginal archaeological potential and values of the EIS Project Area in accordance with the *Due Diligence Code of Practice for the Protection of Aboriginal Objects in NSW* (DECCW 2010). The due diligence assessment was undertaken in consultation with members of the NLALC, who are also representatives of the Ngambri Elders.

As part of the assessment, the approved extraction area and the approved infrastructure area were subject to survey by an archaeologist and representatives of the NLALC. Two archaeological sites were identified. Cooma Quarry 1 (AHIMS 57-2-0880) was identified within an area of exposure along a stock track located over 100m east of the Project Area. The site consisted of a single quartz flake. Cooma Quarry 2 (AHIMS 57-2-0881) was identified on a spur crest approximately 7 metres from the boundary of the approved workshop disturbance area. The site contained a single silcrete broken flake. Umwelt (2012a) also identified that the remainder of the Project Area had low archaeological potential based on a range of

factors including the nature of the landforms it contains and the extent of disturbance. Umwelt (2012a) noted that impacts to the identified sites should be avoided and provided a series of management recommendations, as addressed in this HMP.

## 3.2 Historic Heritage

A search of the NSW State Heritage Inventory conducted on 26 July 2019 identified that there are no State or Nationally listed items in the vicinity of the Project Area. Based on a review of the Queanbeyan Local Environmental Plan 2012, there are five locally listed heritage items in proximity to the Project Area, as shown in **Figure 3-2**. Of these, four have been mapped as being substantially outside the Project Area, with two listings relating to Aboriginal archaeological sites. The remaining site is the Moses Morley Lime Kiln. According to the LEP, this site is located outside the Project Area. However, as discussed below, this site is located within the Project Area, as shown in **Figure 3-2**.

The currently approved disturbance footprint was the subject of an Historical Heritage Assessment Umwelt (2012b). As part of this assessment, inspections of the Project Area were undertaken by an Umwelt archaeologist on 3 April, 16 May and 11 July 2012. The known locally listed Moses Morley Kiln site (refer to **Figure 3-2**) was inspected at this time in order to assess its current physical condition and to identify whether any obvious increased deterioration had taken place since the 1993 inspection and Heritage Assessment (O'Keefe and McGowan 1993). As part of the 2012 inspections, photographs were taken in similar locations to photographs taken as part of the 1993 assessment in order to compare the condition of the site with that recorded in 1993 (refer to **Plates 3.1 to 3.5**).

No other potential heritage items/sites were identified as part of the assessment and no further potential historical archaeological sites associated with the kiln site were identified in the vicinity of the kiln and associated stone structures.

Umwelt (2012b) assessed the potential impacts of the approved Project with reference to the Heritage Branch (now Heritage Division) guidelines and identified that it was very unlikely that the approved Project would result in direct impacts to the identified heritage significance of the locally listed kiln site. However, Umwelt (2012b) identified the potential for indirect impacts as a result of vibration associated with blasting and potential impacts due to the construction of a dam in the vicinity of the identified site and provided management measures to mitigate potential impacts, as further discussed in this HMP.

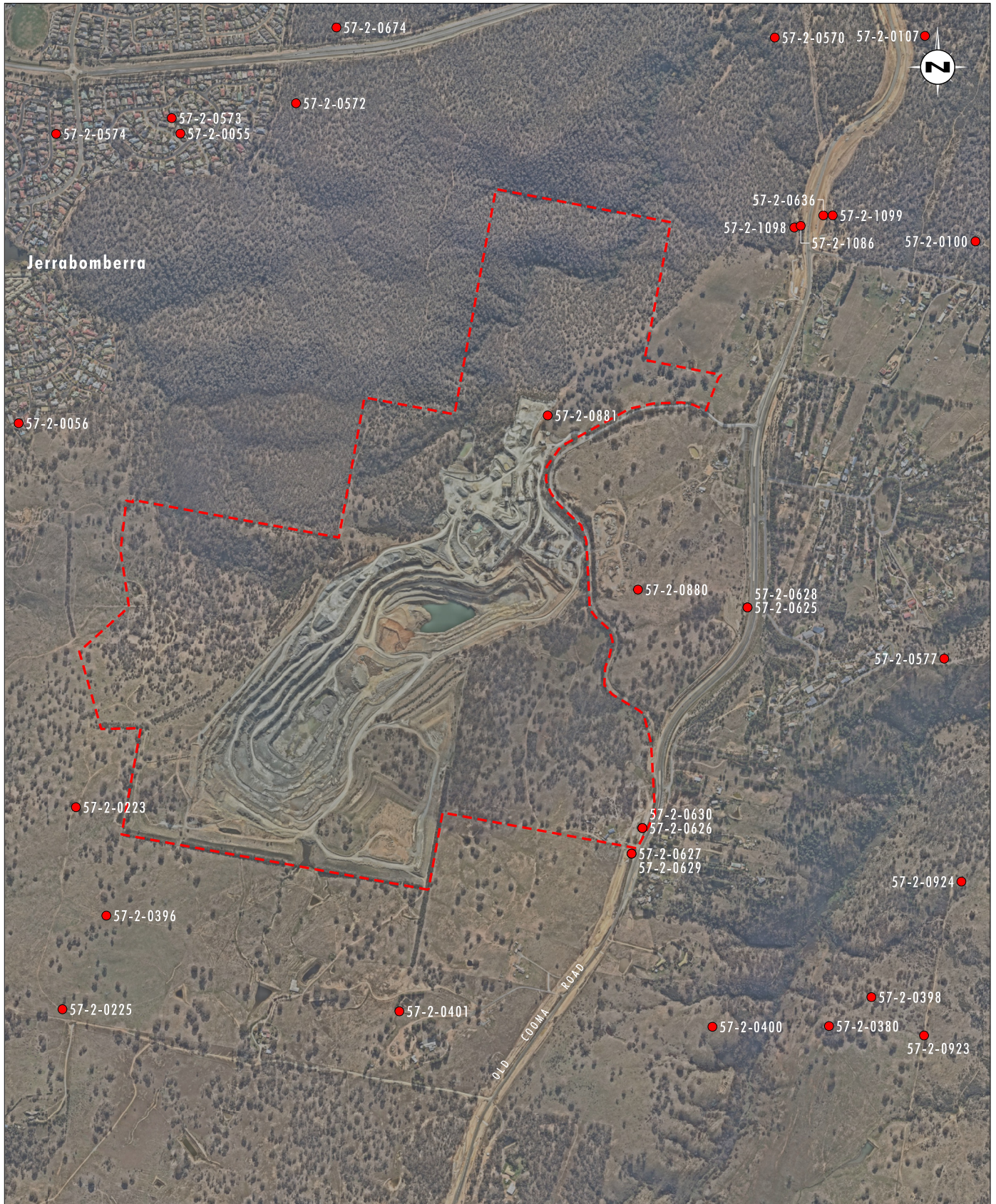


Image Source: Nearmap (May 2019)  
 Data Source: Holcim (2012), AHIMS (2019)

0 200 400 800m  
 1:16 000

**Legend**

- Approved Project Area
- Artefact Scatter

FIGURE 3.1

AHIMS Previously Registered Sites



Image Source: Nearmap (May 2019)  
 Data Source: Holcim (2012), Queanbeyan City Council (2012)

0 0.5 1.0 1.5 km  
 1:30 000

**Legend**

- - - Approved Project Area
- Moses Morley's Lime Kiln Site
- Historical Heritage Items (From Queanbeyan LEP)

FIGURE 3.2

Queanbeyan LEP 2012 Listed Items



PLATE 3.1  
1993 photograph of kiln site, general view to south



PLATE 3.2  
May 2012 photograph of kiln site, general view to south



PLATE 3.3  
1993 photograph of kiln structure, view to west



PLATE 3.4  
May 2012 photograph of kiln structure, view to west



PLATE 3.5  
May 2012 photograph of kiln structure, view to west

## 4.0 Heritage Management Strategy

This section of the plan details the historic heritage and Aboriginal cultural heritage management strategy for the Project and addresses the relevant aspects of Schedule 3 Condition 21(c) of the Development Consent (refer to **Table 3**).

### 4.1 Management of Known Sites

#### 4.1.1 Moses Morley's Lime Kiln Site

Moses Morley's Lime Kiln will not be directly impacted by the Project. In order to manage potential indirect impacts (from both blasting and construction activities), Holcim Australia adopted the following management strategies:

- Establishing and maintaining an exclusion zone of at least 20 metres around the lime kiln and associated buildings.
- Maintaining the existing fence around the lime kiln and associated buildings, with potential for extensions to the fencing to be considered as required.
- Managing vegetation to ensure the growth of vegetation does not further increase any natural deterioration of the site. Vegetation management is undertaken via the implementation of the Cooma Road Rehabilitation Management Plan that facilitates the periodic management and monitoring of weeds in the vicinity of the Moses Morley's Lime Kiln. The methodology utilised includes cutting/slashing of vegetation growing in the soil within the fenced area, with the vegetation growing in the walls of the stone kiln and associated buildings poisoned and left in situ.
- Undertaking six-monthly monitoring of the physical condition of the kiln site in accordance with the methodology provided in **Section 5**.
- If additional impacts are provided in the vicinity of the kiln site, further assessment and comparative analysis will be undertaken in accordance with relevant guidelines and requirements.
- Holcim Australia will repair any damage to the Moses Morley Kiln site which occurs due to Cooma Road Quarry operations. Any repairs will be undertaken in a suitable manner using appropriate fabric and by an appropriately skilled heritage professional in consultation with DPIE.

#### 4.1.2 Aboriginal Archaeological Sites

The two identified Aboriginal sites in the vicinity of the Project Area (Cooma Quarry 1 and 2) will not be directly impacted by the Project. In order to ensure that they are appropriately protected from impact, Holcim Australia adopted the following management measures:

- Establishing and maintaining fences around Cooma Quarry 1 and Cooma Quarry 2 for the life of the Project to avoid any unintended impacts to the sites.
- Ensuring that all Holcim Australia employees and contractors will be made aware of the location of Cooma Quarry 1 and Cooma Quarry 2 through the induction process, and are made aware of the need to avoid impacts to these sites.
- Managing any previously unknown Aboriginal Cultural Heritage sites that may be identified during works undertaken as part of the Project (should this occur) in accordance with the procedure outlined in **Section 4.2.2**.
- Ensuring that consultation is undertaken with the Ngambri Elders/NLALC in relation to any changes in the management of Aboriginal cultural heritage within the Project Area, with any such changes to also result in the review and update of this HMP.

## **4.2 Contingency Plan for Unpredicted Impacts to Heritage Items**

### **4.2.1 Previously Unidentified Historic Heritage Objects**

If during the course of works any previously unknown historical archaeological material or heritage sites/items are uncovered or identified, all work in the area of the item(s) shall cease immediately and a qualified archaeologist consulted. If the archaeologist considers the material uncovered is a 'relic' (as defined below) or a heritage item, the Heritage Division, Office of Environment and Heritage will be consulted, in accordance with Section 146 of the *Heritage Act 1977* (NSW), to determine an appropriate course of action prior to the recommencement of work in the area of the item.

A 'relic' under the Heritage Act is defined as any deposit, object or material evidence that:

- *relates to the settlement of the area that comprises New South Wales, not being Aboriginal settlement; and*
- *is of State or local heritage significance.*

### **4.2.2 Previously Unidentified Aboriginal Archaeological/Cultural Heritage Items**

Should a previously unknown Aboriginal object or site be located within any part of the Project Area, works in the vicinity of the site/object will cease and Holcim Australia will inform the NLALC/Ngambri Elders who will be given the opportunity to visit the site to assess its Aboriginal cultural value. A suitably qualified archaeologist will also be present to assess the archaeological significance of the site.

In the case of a site found during works for surface infrastructure, quarrying activities or other approved activities where it is not possible to avoid impact to the site, Holcim Australia will determine an appropriate management outcome in consultation with the NLALC/Ngambri Elders, a suitably qualified archaeologist and DPIE.

### **4.2.3 Potential Human Skeletal Remains**

In the event that a potential burial site or potential human skeletal remains are identified within the Project Area, the procedure below is to be implemented:

- as soon as remains are exposed, work is to halt immediately to allow assessment and management;
- contact local police, DPIE and the Heritage Division;
- a physical or forensic anthropologist should inspect the remains *in situ*, and make a determination of ancestry (Aboriginal or non-Aboriginal) and antiquity (pre-contact, historic or forensic);
- if the remains are identified as forensic the area is deemed as crime scene; or
- if the remains are identified as Aboriginal, the site is to be secured and the DPIE and Aboriginal parties are to be notified in writing; or
- if the remains are non-Aboriginal (historical) remains, the site is to be secured and the Heritage Division is to be contacted.

The above process functions only to appropriately identify the remains and secure the site. From this time, the management of the remains is to be determined through liaison with the appropriate stakeholders (New South Wales Police Force, forensic anthropologist, DPIE, Heritage Division, and registered Aboriginal parties etc.).



### **4.3 Heritage Awareness Training**

The heritage status and values of the identified historic heritage and Aboriginal archaeology sites adjacent to Project Area will be recognised in inductions/training undertaken by relevant personnel and contractors who may be working within close proximity of these sites. The inductions/training will include:

- the nature and location of the heritage sites (including the Moses Morley Kiln site, Cooma Quarry 1 and Cooma Quarry 2);
- the historical heritage and Aboriginal cultural heritage and archaeological values and significance of the heritage sites;
- the nature of the protection measures being undertaken; and
- information related to the relevant legislation for the protection of historic heritage and Aboriginal archaeological sites/items and the penalties which may arise if sites/items are disturbed/destroyed.

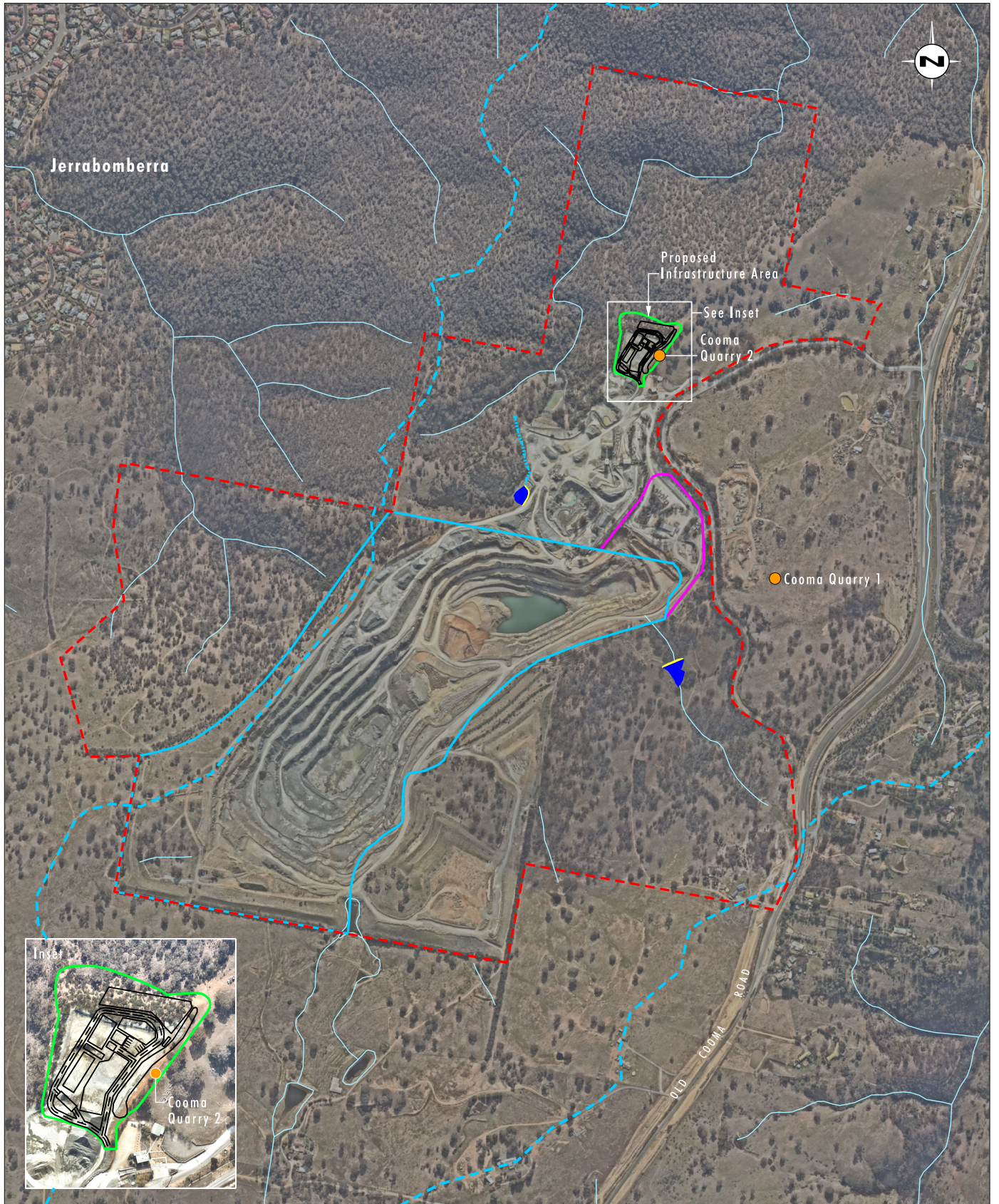


Image Source: Nearmap (May 2019)  
 Data Source: Holcim (2012), AHIMS (2019)

0 100 300 600m  
 1:12 500

**Legend**

- - - Approved Project Area
- - - Approved Extraction Area
- - - Approved Additional Extraction Area
- - - Approved Disturbance Area - Workshop
- - - Catchment Boundary
- ▶▶▶▶▶ Clean Drain
- Isolated Artefact

**FIGURE 4.1**  
**Location of Sites**  
**Cooma Quarry 1 & 2**

## **5.0 Heritage Monitoring**

### **5.1 Moses Morley Lime Kiln**

The physical condition of the Moses Morley Lime Kiln site will be subject to ongoing monitoring on a six-monthly basis. This will involve the completion of comparative photographic analysis between current images and those from photographic/archival recordings of the kiln site completed in accordance with Heritage Branch, OEH guidelines *Photographic Recording of Heritage Items Using Film or Digital Capture* (2006). Any visible damage or alteration to the site will also be documented in written format, as required.

A review of monitoring results will be conducted every five years, with the potential to increase the interval between heritage monitoring where the review of results indicates no changes over four consecutive monitoring periods.

### **5.2 Cooma Quarry 1 and 2**

The fencing installed for the protection of the Cooma Quarry 1 and 2 sites will be monitored to confirm its condition on a regular basis. In accordance with the requirements of **Section 4.1.2**, the fencing will be maintained for the life of the operation.

## **6.0 Reporting**

### **6.1 External Reporting**

A summary of heritage monitoring results will be provided in the Cooma Road Quarry Annual Review.

### **6.2 Incident/Complaint Response**

Any incidents or complaints relating to heritage at Cooma Road Quarry are to be managed in accordance with the requirements of the Cooma Road Quarry Environmental Management Strategy (EMS). A summary of incidents/complaints will be available to regulatory authorities on request, published on the Holcim Australia website (<http://www.holcim.com.au/>) and provided in the Annual Review. The incident and non-compliance reporting process is detailed below.

#### **6.2.1 Incident Notification**

An incident is an occurrence or set of circumstances that causes or threatens to cause material harm and which may or may not be or cause a non-compliance. In accordance with Condition 7 Schedule 5 of the Development Consent, Holcim Australia shall notify DPIE and any other relevant agencies immediately after it becomes aware of an incident. The notification must be in writing to [compliance@planning.nsw.gov.au](mailto:compliance@planning.nsw.gov.au) and identify Cooma Road Quarry, the Development Consent Number, the location and nature of the incident.

Incidents are also to be reported in accordance with the requirements of the *Protection of the Environment Operations Act 1997*, EPL 1453 and the Cooma Road Quarry Pollution Incident Response Management Plan (PIRMP).

#### **6.2.2 Non-Compliances Notification**

Non-compliance is an occurrence, set of circumstances or development that is a breach of the Development Consent. Within seven days of becoming aware of non-compliances, Holcim Australia must also notify DPIE of the non-compliance and identify:

- the condition the development is noncompliant with;
- the way in which it does not comply and the reasons for the non-compliance (if known); and
- what actions have or will be undertaken to address the non-compliance.

### **6.2.3 Adaptive Management**

In accordance with Condition 5 of Schedule 5 of the Development Consent, Holcim Australia will assess and manage heritage related risks to ensure compliance with the requirements of this Plan and the Development Consent.

Where a non-compliance relating to heritage management has occurred, Holcim Australia will, to the satisfaction of the Secretary of DPIE:

- take all reasonable and feasible measures to ensure the exceedance / non-compliance ceases and does not recur;
- consider all reasonable and feasible options for remediation (where relevant) and submit a report to the DPIE describing those options and any preferred remediation measures or other course of action; and
- implement remediation measures as directed by the Secretary of DPIE.

## **7.0 Review and Improvement**

Ongoing monitoring and review on the performance and implementation of this HMP will be undertaken in accordance with Cooma Road Quarry EMS.

In accordance with Condition 4 of Schedule 5, Holcim Australia will review, and if necessary revise, the strategies, plans, and programs required under Development Consent to the satisfaction of the Secretary, within 3 months of the submission of:

- a) an annual review;
- b) an incident report;
- c) an audit report; and
- d) modifications to the Development Consent.

In accordance with Condition 3 Schedule 5, to ensure the strategies, plans or programs under this consent are updated on a regular basis, and that they incorporate any appropriate mitigation measures to improve the environmental performance of the development, Holcim Australia may submit revised strategies, plans or programs to the Secretary for approval at any time.

Any changes made to the HMP will be made in consultation with DPIE, Council and Aboriginal parties as necessary. Updated versions of the approved HMP will be made publicly available on the Holcim Australia website (<http://www.holcim.com.au/>).

## 8.0 Definitions

The terminology utilised within this HMP is defined in **Table 4** below.

**Table 4 Terminology Utilised Within the HMP**

Term	Definition
<b>AHIMS</b>	Aboriginal Heritage Information Management System
<b>HMP</b>	Heritage Management Plan
<b>DPIE</b>	Department of Planning, Industry and Environment
<b>EP&amp;A Act</b>	<i>Environmental Planning and Assessment Act 1979</i>
<b>EPA</b>	Environment Protection Authority
<b>Holcim</b>	Holcim (Australia) Pty Limited
<b>NLALC</b>	Ngambri Local Aboriginal Land Council
<b>NPW Act</b>	<i>National Parks and Wildlife Act (1974)</i>
<b>OEH</b>	Office of Environment and Heritage

## 9.0 Roles and Responsibilities

Relevant roles and responsibilities associated with this HMP are presented in **Table 5** below.

**Table 5 Roles and Responsibilities**

Role	Responsibilities
Holcim Australia District Manager	<ul style="list-style-type: none"> <li>• Provide adequate resources for the implementation of this HMP.</li> <li>• Authorise the implementation of specific management measures to minimise blast impacts in accordance with this plan.</li> <li>• Ensuring that the outcomes of monitoring are systematically evaluated as part of ongoing quarry planning.</li> <li>• Authorise internal and external reporting requirements as well as subsequent revisions of this HMP.</li> <li>• Co-ordinate periodic reviews of this HMP.</li> </ul>
Cooma Road Quarry Manager	<ul style="list-style-type: none"> <li>• Oversee the implementation of the HMP.</li> <li>• Ensure that the results of monitoring are systematically evaluated and reported to relevant personnel for consideration as part of ongoing quarry planning.</li> <li>• Undertake consultation with Aboriginal parties as relevant.</li> <li>• Ensure all internal and external reporting requirements are met.</li> <li>• Ensure copies of the HMP are available on the Holcim Australia website.</li> <li>• Assist with periodic reviews of this HMP.</li> </ul>
Planning and Environment Coordinator NSW / ACT	<ul style="list-style-type: none"> <li>• Manage heritage related complaints in accordance with the complaints management procedure.</li> <li>• Ensure that the results of monitoring are systematically evaluated and reported to relevant personnel for consideration as part of ongoing quarry planning.</li> <li>• Assist with the review of this plan as required.</li> </ul>

## 10.0 References

Department of the Environment, Climate Change and Water (DECCW) 2010. Due Diligence Code of Practice for the Protection of Aboriginal Objects in NSW.

EMM Consulting 2016. Cooma Road Quarry, *Modification to Development Consent Environmental Assessment*, prepared for Holcim (Australia) Pty Ltd.

EMM Consulting 2019. Cooma Road Quarry, *Statement of Environmental Effects: Modification 2 to Development Consent*, prepared for Holcim (Australia) Pty Ltd.

Heritage Office and Department of Urban Affairs & Planning 1996, revised 2002. Statements of Heritage Impact.

Heritage Office 2006. Photographic Recording of Heritage Items Using Film or Digital Capture.

NSW Department of Health 2008. Policy Directive – Exhumation of Human Remains.

NSW Heritage Office 1998. Skeletal Remains – Guidelines for the Management of Human Skeletal Remains under the Heritage Act 1977.

NSW National Parks and Wildlife Service (NPWS) 1997. Aboriginal Cultural Heritage Standards and Guidelines Kit.

O'Keefe & McGowan 1993. Heritage Assessment Cooma Road Quarry Queanbeyan.

Umwelt (Australia) Pty Limited (Umwelt) 2012a. Cooma Road Quarry Continued Operations Project: Aboriginal Archaeology Due Diligence Report.

Umwelt (Australia) Pty Limited (Umwelt) 2012b. Cooma Road Quarry Continued Operations Project: Historic Heritage Assessment.

## Appendix 1 – General Management Plan Requirements from Development Consent

<b>Schedule 5</b>	
<b>Management Plan Requirements</b>	
1. The Proponent shall ensure that the management plans required under this approval are prepared in accordance with any relevant guidelines, and include:	
a) detailed baseline data	3.0
b) a description of: <ul style="list-style-type: none"> <li>• the relevant statutory requirements (including any relevant approval, licence or lease conditions);</li> <li>• any relevant limits or performance measures/criteria;</li> <li>• the specific performance indicators that are proposed to be used to judge the performance of, or guide the implementation of, the project or any management measures;</li> </ul>	2.0
c) a description of the measures that would be implemented to comply with the relevant statutory requirements, limits, or performance measures/criteria;	4.0
d) a program to monitor and report on the: <ul style="list-style-type: none"> <li>• impacts and environmental performance of the project;</li> <li>• effectiveness of any management measures (see (c) above);</li> </ul>	5.0
e) a contingency plan to manage any unpredicted impacts and their consequences and to ensure that ongoing impacts reduce to levels below relevant impact assessment criteria as quickly as possible;	4.2
f) a program to investigate and implement ways to improve the environmental performance of the project over time;	7.0
g) a protocol for managing and reporting any: <ul style="list-style-type: none"> <li>• incidents;</li> <li>• complaints;</li> <li>• non-compliances with conditions of this approval and statutory requirements; and</li> <li>• exceedances of the impact assessment criteria and/or performance criteria; and</li> </ul>	6.2
h) a protocol for periodic review of the plan.	7.0

## APPENDIX 2 - STAKEHOLDER CONSULTATION



**Planning,  
Industry &  
Environment**

**Energy & Resources  
Planning & Assessment**  
Contact: Colin Phillips  
Telephone: 9274 6483  
Email: [colin.phillips@planning.nsw.gov.au](mailto:colin.phillips@planning.nsw.gov.au)

Ms Shilpa Shashi  
Planning and Environment Coordinator NSW / ACT  
Holicim (Australia) Pty Ltd  
Level 8 Tower B - 799 Pacific Highway  
CHATSWOOD NSW 2067

Dear Ms Shashi

### **Cooma Road Quarry Air Quality Expert (SSD 5109)**

I refer to your letter of 30 July 2019 seeking the Secretary's approval of Mr Luke Bettridge of Umwelt as a suitably qualified person to update the quarry's Air Quality Management Plan, required by condition 16 of Schedule 3 of the quarry's consent.

The Secretary has approved the appointment of Mr Bettridge.

In accordance with condition 3 of Schedule 5, the Secretary has agreed that the company's revision of management plans, triggered by the approval of Modification 2, may occur without consulting the agencies nominated in the relevant conditions of consent. The exception is that the company must consult with Queanbeyan Council during the preparation of the Transport Management Plan.

Please contact Colin Phillips on the details above if you have any questions.

Yours sincerely

A handwritten signature in blue ink that reads "Howard Reed".

Howard Reed 7.8.19  
**Director, Resource Assessments**  
**Energy and Resource Assessments**  
As the Secretary's nominee