



Community Consultative Committee (CCC)

# Dubbo Quarry Continuation Project

## Meeting 5

Tuesday 1 May 2023 - 1pm



# Agenda

---

Agenda	
<b>Project:</b> Dubbo Quarry	
<b>Date:</b> 1 May 2023	
<b>Venue:</b> 22L Sheraton Rd, Dubbo NSW	
<b>Time:</b> 1pm	
<b>Chair:</b> Brendan Blakeley	
1.	Welcome and Introductions incl previous minutes review
2.	Quarry Operations Update
3.	Project Update
4.	General Business and Discussion
5.	Next Meeting

**Optional Site Tour**

# 1. Welcome and Introductions

---

Name	Representing
Brendan Blakeley	Chairperson - Director Elumni Consulting
Paul Scott	Dubbo Christian School
Rowena Parish	St John's College
Ingo Steppat Helen Eyre	Dubbo Regional Council
Fred Adams	Holcim - General Manager Aggregates NSW / ACT
Joey Nichols	Holcim - Dubbo Quarry Manager

# 1. The Supporting Team:

---

Dubbo Quarry and the Dubbo Quarry Continuation Project are supported by a team of technical specialists who have been involved in the impact assessment and ongoing operation of the Dubbo Quarry.



Hamish Beattie  
Project Manager • Holcim  
Australia



Lisa Honan  
Planning Approvals Director  
NSW • Holcim Australia



Rob Townsend  
Acting Environment  
Manager NSW • Holcim  
Australia

# 1. Review of notes from previous meeting.

---



## Dubbo Quarry Continuation Project

### Meeting 4

Tuesday 16 December 2021 - 1pm.



## Comments? Feedback?

Use the following link to locate the Dubbo CCC presentations, minutes and content:

<https://www.holcim.com.au/dubbo-quarry>



## 2. Quarry Operations Update

Past several months the business has been continuing to operate within the existing pit known as the Eastern Pit.

There are a number of months of ongoing extraction within the Eastern Pit that will occur before we transition to the new Western Pit (approved in March 2023)



### 3. Project Update: Timeframes

Since the last meeting in Dec 2021 the following has occurred:

- Holcim undertook a Performance Efficiency Review (PER) which reviewed the entire operations of the site.
- The PER resulted in minor amendments to the project including reduced visual impacts and reduced noise due to lowering the plant within the pit.
- A Response to Submission and Amendment was submitted to DPE in October 2022.
- DPE undertook consultation with agencies and subsequently issued a consent on 2 March 2023.
- Holcim has not yet commenced activities under the consent

#### Development Consent

*Section 4.38 of the Environmental Planning and Assessment Act 1979*

As delegate of the Minister for Planning, I approve the development application referred to in Schedule 1, subject to the conditions in Schedule 2.

These conditions are required to:

- prevent, minimise, or offset adverse environmental impacts;
- set standards and performance measures for acceptable environmental performance;
- require regular monitoring and reporting; and
- provide for the ongoing environmental management of the development.



Jessie Evans  
Director, Energy and Resource Assessments

Sydney

2 March 2023

#### SCHEDULE 1

Application Number:

SSD 10417

Applicant:

Holcim (Australia) Pty Limited

Consent Authority:

Minister for Planning

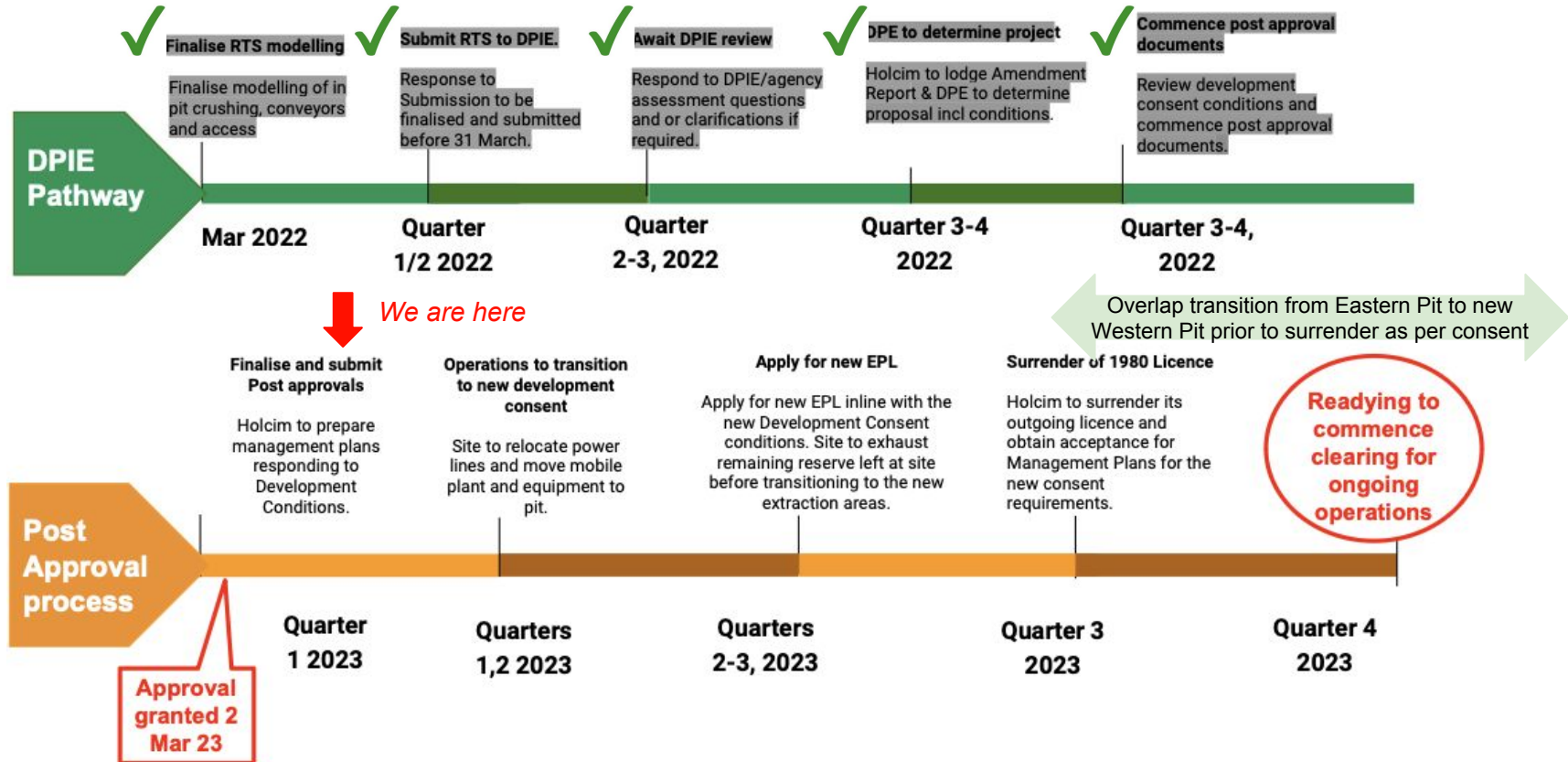
Site:

The land defined in Appendices 1 and 2

Development:

Dubbo Quarry Continuation Project

### 3. Project Update: Determination and Post Approvals Process

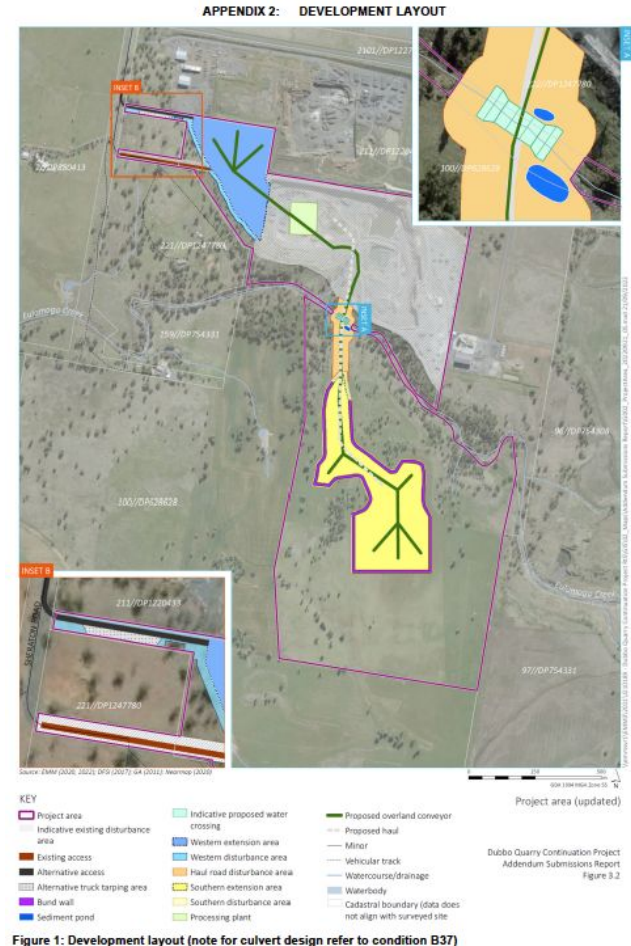




### 3. Project Update - Management Plans under preparation

Management Plans	Regulatory consultees
Transport	TfNSW & Council
Air Quality	EPA
Noise	EPA
Rehabilitation	DPE Water & Council
Soil & Water	EPA, DPE Water & Council
Biodiversity and Offsetting	BCD, DPE Water & Council
EMS	NA
Cultural Heritage (Voluntary)	NA - Heritage & RAPs will occur

*Note - Council can expect to start to receive management plans for comment within the coming month*



### 3. Project Update - The Consent in brief

Traffic related conditions form part of the consent, and will be incorporated into the management plan. The traffic route, past the schools is restricted on school days. Holcim is considering a possible alternative route (only during the restricted school times - 30mins am and 45mins pm).

- A11. The Applicant must limit heavy vehicles leaving the site to:
- 20 laden trucks per hour; and
  - 121 laden trucks per day.

#### Hours of Operation

A12. The Applicant must comply with the operating hours set out in Table 1.

**Table 1: Operating hours**

Activity	Permissible Operating Hours
Construction work	<ul style="list-style-type: none"> <li>7 am to 6 pm Monday to Friday</li> <li>8 am to 1 pm Saturday</li> <li>At no time on Sundays or public holidays</li> </ul>
Quarrying operations	<ul style="list-style-type: none"> <li>7 am to 6 pm Monday to Saturday</li> <li>At no time on Sundays or public holidays</li> </ul>
Blasting	<ul style="list-style-type: none"> <li>Once per week between 9 am to 5 pm Monday Friday</li> </ul>
Heavy vehicle loading and road transportation	<ul style="list-style-type: none"> <li>4 am to 6 pm Monday to Saturday</li> <li>At no time on Sundays or public holidays</li> <li>No road haulage between 24 December and 1 January, inclusive</li> <li>No product heavy vehicle haulage along Sheraton Road (from 8:30 am to 9:00 am and 2:45 pm to 3:30 pm during school days) between Boundary Road roundabout and Mitchell Highway.</li> </ul>
Maintenance and environmental management	<ul style="list-style-type: none"> <li>At any time provided that the activity is not audible at any privately owned residence</li> </ul>

A13. The following activities may be carried out outside the hours specified in Table 1.

- delivery or dispatch of materials as requested by Police or other public authorities; and
- emergency work to avoid the loss of lives, property or to prevent environmental harm.

In such circumstances, the Applicant must notify the Department and affected residents prior to undertaking the activities, or as soon as is practical thereafter.

Consent Appendix - Traffic Route Figure

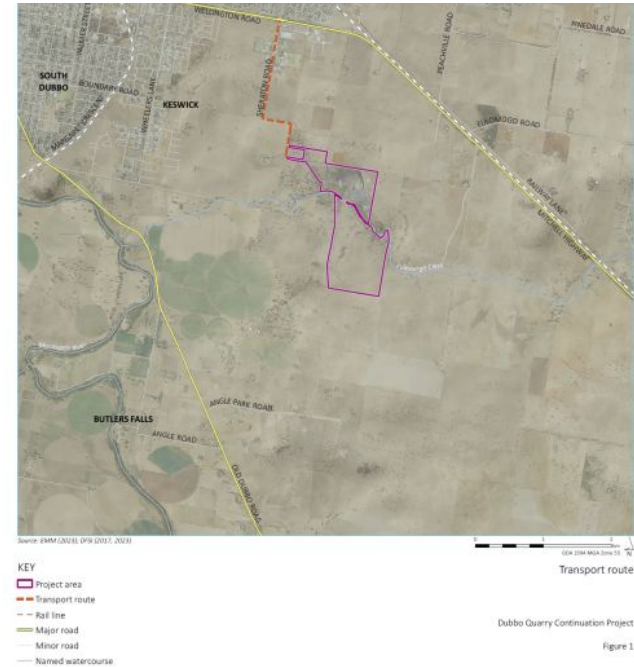


Figure 1: Product transport route

### 3. Project Update - Other Matters

VPA terms have been negotiated between Holcim and Council.

[Holcim's website](#) will be updated in the coming month to house the new consent, the management plans (when approved) and community consultative committee meeting information.

Monitoring data and other information will be uploaded once Holcim activates the consent.

The consent is also currently available on [DPE's website](#).

At this time, Holcim expects to commence stripping the new Western Pit in ~ February 2023.

The image shows two screenshots of web pages. The top screenshot is the Holcim Australia website, featuring a navigation bar with links like 'ABOUT US', 'PRODUCTS & SERVICES', 'PROJECTS', 'CAREERS', 'SUSTAINABILITY', and 'NEWS & PUBLICATIONS'. The main content area is titled 'Dubbo Quarry NSW' and includes a description of the quarry's location and products, as well as contact information for the 'Environmental or Community Enquiries' manager. The bottom screenshot is the NSW 'myHome Planner' website, showing the 'Dubbo Quarry Continuation Project' page. It includes a progress bar for the project stages: Assessment, Post Approval, Compliance, and Submissions. The current status is 'Determination'.

## 4. General Discussion

---

Discussion / Questions and Answers

## 5. Meeting Close

---

- Committee to decide when the next meeting is to be held?