

2024 Dubbo Quarry Pollution Incident Response Management Plan



equipment.

Dubbo Quarry Pollution Incident Response Management Plan (PIRMP)

Revision/ Checking History

Revision Number	Date	Checked by	Issued by
1	Nov 2014	Daniel Lidbetter - NSW/ACT Planning & Environment Coordinator Alasdair Webb- Quarry Manager	Daniel Lidbetter
2	Nov 2015	Daniel Lidbetter - NSW/ACT Planning & Environment Coordinator Alasdair Webb- Quarry Manager	Daniel Lidbetter
3	Nov 2016	Daniel Lidbetter - NSW/ACT Planning & Environment Coordinator Alasdair Webb- Quarry Manager	Daniel Lidbetter
3	Oct 2017	Amy Nelson - NSW/ACT Planning & Environment Coordinator Alasdair Webb- Quarry Manager	Amy Nelson
4	Oct 2018	Hema Vignaraja – SHE Reporting Analyst Alasdair Webb- Quarry Manager	Hema Vignaraja
6	Sept 2019	Hema Vignaraja – SHE Reporting Analyst Shilpa Shashi - NSW/ACT Planning & Environment Coordinator	Hema Vignaraja
7	Sept 2020	Shilpa Shashi - NSW/ACT Planning & Environment Coordinator	Shilpa Shashi
8	Nov 2021	Shilpa Shashi - NSW/ACT Planning & Environment Coordinator Joey Nichols – Quarry Manager	Shilpa Shashi

equipment.

9	November 2022	Rob Townsend - Acting environment manager-NSW Joey Nichols - Quarry Manager	Rob Townsend
10	November 2023	Joey Nichols - Quarry Manager	Dozie Egeonu Environment Manager - NSW & ACT
11	November 2024	Leeroy Wall - Quarry Manager	Dozie Egeonu Environment Manager - NSW & ACT

equipment.

Table of Contents

1. Purpose	5
2. Scope	7
3. Definitions	7
4. Associated Documentation	7
5. Responsibility	8
6. Record Retention	8
7. Procedure	8
7.1 Environmental Impact and Hazard Register	8
Table 1: Holcim SHE Risk Score Matrix	9
Table 2: Holcim Quarry Environmental Impact and Hazard Register	11
7.2 Pollutant and Safety Equipment Information	19
7.3 Emergency Response Map	37
7.4 PIRMP Review	41
7.5 Typical Holcim Response process	41
7.6 Communication Strategy	43
7.7 Staff Training	45
7.8 Continual Improvement	45

Appendices

A	Emergency Contact Details
B	Pollution Incident Response Test Checklist
C	Community Notification Strategy

Glossary of Acronyms

PIDS- Pollution Information Data Sheet

PPE- Personal Protective Equipment

SDS- Safety Data Sheets

PEOA- Protection of the Environment Operations Act 1997

equipment.

1. Purpose

The purpose of this document is to detail the pollution incident response management plan for the Dubbo Quarry, to comply with Section 5.7A of the Protection of the Environment Operations (POEO) Act:

Protection of the Environment Operations Act 1997 No 156

Part 5.7A Duty to prepare and implement pollution incident response management plans

153A Duty of licence holder to prepare pollution incident response management plan

The holder of an environment protection licence must prepare a pollution incident response management plan that complies with this Part in relation to the activity to which the licence relates.

Maximum penalty:

- (a) in the case of a corporation—\$1,000,000 and, in the case of a continuing offence, a further penalty of \$120,000 for each day the offence continues, or*
- (b) in the case of an individual—\$250,000 and, in the case of a continuing offence, a further penalty of \$60,000 for each day the offence continues.*

153B EPA may direct other persons to prepare pollution incident response management plan

- (1) The EPA may, in accordance with the regulations, require the occupier of premises at which industry is carried out to prepare a pollution incident response management plan that complies with this Part in relation to activities at the premises.*
- (2) A person must not fail to comply with such a requirement.*

Maximum penalty:

- (a) in the case of a corporation—\$1,000,000 and, in the case of a continuing offence, a further penalty of \$120,000 for each day the offence continues, or*
 - (b) in the case of an individual—\$250,000 and, in the case of a continuing offence, a further penalty of \$60,000 for each day the offence continues.*
- (3) The regulations may make provision for or with respect to:*
- (a) the class or classes of premises, or industries carried out at premises, that may be the subject of a requirement to prepare a pollution incident response management plan, and*
 - (b) the circumstances in which some or all premises within those classes may be the subject of a requirement to prepare a pollution incident response management plan.*

153C Information to be included in plan

A pollution incident response management plan must be in the form required by the regulations and must include the following:

equipment.

- (a) *the procedures to be followed by the holder of the relevant environment protection licence, or the occupier of the relevant premises, in notifying a pollution incident to:*
 - (i) *the owners or occupiers of premises in the vicinity of the premises to which the environment protection licence or the direction under section 153B relates, and*
 - (ii) *the local authority for the area in which the premises to which the environment protection licence or the direction under section 153B relates are located and any area affected, or potentially affected, by the pollution, and*
 - (iii) *any persons or authorities required to be notified by Part 5.7,*
- (b) *a detailed description of the action to be taken, immediately after a pollution incident, by the holder of the relevant environment protection licence, or the occupier of the relevant premises, to reduce or control any pollution*
- (c) *the procedures to be followed for co-ordinating, with the authorities or persons that have been notified, any action taken in combating the pollution caused by the incident and, in particular, the persons through whom all communications are to be made,*
- (d) *any other matter required by the regulations.*

153D Keeping of plan

A person who is required to prepare a pollution incident response management plan under this Part must ensure that it is kept at the premises to which the relevant environment protection licence relates, or where the relevant activity takes place, and is made available in accordance with the regulations.

Maximum penalty:

- (a) *in the case of a corporation—\$1,000,000 and, in the case of a continuing offence, a further penalty of \$120,000 for each day the offence continues, or*
- (b) *in the case of an individual—\$250,000 and, in the case of a continuing offence, a further penalty of \$60,000 for each day the offence continues.*

153E Testing of plan

A person who is required to prepare a pollution incident response management plan under this Part must ensure that it is tested in accordance with the regulations.

Maximum penalty:

- (a) *in the case of a corporation—\$2,000,000 and, in the case of a continuing offence, a further penalty of \$240,000 for each day the offence continues, or*
- (b) *in the case of an individual—\$500,000 and, in the case of a continuing offence, a further penalty of \$120,000 for each day the offence continues.*

153F Implementation of plan

If a pollution incident occurs in the course of an activity so that material harm to the environment (within the meaning of section 147) is caused or threatened, the person carrying

equipment.

on the activity must immediately implement any pollution incident response management plan in relation to the activity required by this Part.

Maximum penalty:

- (a) in the case of a corporation—\$2,000,000 and, in the case of a continuing offence, a further penalty of \$240,000 for each day the offence continues, or*
- (b) in the case of an individual—\$500,000 and, in the case of a continuing offence, a further penalty of \$120,000 for each day the offence continues.*

2. Scope

The scope of this management plan includes:

Pollution Incident Response Management Plan (PIRMP) for environmental pollution generated at the Dubbo Quarry;

3. Definitions

- Pollution Incident -* An incident or set of circumstances during or as a consequence of which there is or is likely to be a leak, spill or other escape or deposit of a substance, as a result of which pollution has occurred, is occurring or is likely to occur. It includes an incident or set of circumstances in which a substance has been placed or disposed of on premises, but it does not include an incident or set of circumstances involving only the emission of any noise.
- Material Harm -*
- (i) it involves actual or potential harm to the health or safety of human beings or to ecosystems that is not trivial, or
 - (ii) it results in actual or potential loss or property damage of an amount, or amounts in aggregate, exceeding \$10,000 (or such other amount as is prescribed by the regulations), It does not matter that harm to the environment is caused only in the premises where the pollution incident occurs, and
- Loss -* the reasonable costs and expenses that would be incurred in taking all reasonable and practicable measures to prevent mitigate or make good harm to the environment.

4. Associated Documentation

- Protection of the Environment Operations Act 1997
- Protection of the Environment (General) Amendment (Pollution Incident Response Management Plans) Regulation 2012
- Appendix A: Emergency Contact Details

equipment.

- Appendix B: Pollution Incident Response Test Checklist
- Appendix C: Community Notification Strategy

5. Responsibility

The following personnel are responsible for the PIRMP;

- 1) Activating the plans and managing the response: Leeroy- Quarry Manager
- 2) Notifying and coordinating relevant authorities Leeroy Wall- Quarry Manager
- 3) Implementation and management of this document: NSW/ACT Planning & Environment Coordinator
- 4) Annual review and testing of PIRMP – Leeroy Wall- Quarry Manager

6. Record Retention

A copy of all Quarry pollution incident response records will be retained on site in accordance with SHE guideline 1.4 – Administrative and Legal Requirements. A copy will also be saved electronically on google drive in the 'Site PIRMPs Final' folder and linked with the site's SHE schedule.

Records must be made available to EPA officers and any person responsible for the PIRMP.

7. Procedure

The following section outlines the management procedures for pollution incident response management. The protocol is split into three sections:

- 1) Key environmental hazards and mitigation measures
- 2) Pollutant and Safety equipment information and management of Pollution Incidents
- 3) Emergency Response Maps

7.1 Environmental Impact and Hazard Register

In order to effectively plan for a potential pollution event, a register of environmental hazards has been created. Each hazard has been assessed in accordance with the Holcim SHE Risk Assessment tool (see Table 1 below).

The hazards have been grouped according to the area of environmental impact. By identifying these hazards ahead of time, mitigation measures can be identified and implemented through site procedures to minimise the risk of a pollution event occurring (table 2 below).

equipment.

Table 1: Holcim SHE Risk Score Matrix

Step 1 - Consider the Consequence					
What are the consequences of the most reasonable worst case scenario considering a credible failure of existing controls?					

Consequence	Disaster	Severe	Serious	Significant	Minor
Environment On Site & Off Site	Major event, unconfined impact, severe permanent damage with low likelihood of recovery.	Significant permanent damage; reversible damage with recovery time of years; high potential for prosecution	Minor permanent damage; temporary damage that is widespread or that has moderate impact	Damage that is near source confined, temporary and minor	No measurable damage to environment
Compliance With Legal and Other Requirements	Blatant or serious breach of legal requirement, leading to operation being suspended or severely reduced. Prosecution expected.	Breach of external requirement (license, legislation, regulation, contract etc.) with high potential for prosecution and/or high impact.	Non-compliance with external requirement with moderate potential for impact.	Repeated non-compliance with internal procedure, non-compliance with external requirement with low potential impact	Minor non-compliance with internal procedures.
Community Perception and Reputation	Significant adverse media attention (state or national level), loss of reputation or work nationally or across product groups.	Prosecution, significant impacts on social license to operate, loss of reputation or ability to secure work across product groups.	Local adverse media attention, loss of reputation or ability to secure work in local area, complaints that result in changes to external requirements.	Multiple community complaints or complaints that require changes to internal operating procedures.	Community complaint resolved with no changes to existing operating procedures.

equipment.

Note: Temporary environmental damage has a duration of up to approximately one week to rectify

Step 2 - Consider the Likelihood					
What is the likelihood that the proposed consequence will occur with a credible failure of existing controls?					
Likelihood	Certain	Likely	Possible	Unlikely	Rare
Description	Event that is expected to occur on multiple occasions	Event that is likely to occur at least once	Event that may occur	Event that is unlikely to occur	Event that may occur only in exceptional circumstances
Frequency	Event is likely to occur more than twice a year.	Event is likely to occur once or twice a year.	Event is likely to occur more than once or twice in a 10 year period	Event is likely to occur once or twice in a 10 year period	Event is likely to occur once or twice in a 100 year period

Step 3 - Determine Risk Rating from the Risk Matrix					
Likelihood	Consequences				
	Disaster	Severe	Serious	Significant	Minor
Certain	High	High	High	Medium	Medium
Likely	High	High	Medium	Medium	Low
Possible	High	Medium	Medium	Low	Low
Unlikely	Medium	Medium	Low	Low	Low

equipment.

Rare	Medium	Low	Low	Low	Low
------	--------	-----	-----	-----	-----

equipment.

Table 2: Holcim Quarry Environmental Impact and Hazard Register

Key Environmental Hazards		Risk			Mitigation Measures	Revised Risk		
		L	C	R		L	C	R
Air Quality								
1	Excessive dust emissions	P o s s i b l e	S e r i o u s	M e d i u m	<ul style="list-style-type: none">▪ Review results & monitoring program quarterly▪ Use of Environmental Control Systems foaming additive▪ Water carts/spraying▪ Minimise disturbed areas▪ Stop dust generating activities as necessary▪ Progressively rehabilitate disturbed areas▪ Restrict works during periods of high wind▪ Dust minimisation training▪ Maintenance of dust control equipment	U n l i k e l y	S i g n i f i c a n t	L o w
2	Health issues off site	R a r e	S e v e r e	L o w	<ul style="list-style-type: none">▪ As per (1)▪ Complaints hot line▪ Communicate construction activities to neighbours plus potential for dust	R a r e	S e r i o u s	L o w
3	Equipment exhaust emissions exceed limits	U n l i k e	S i g n i f	L o w	<ul style="list-style-type: none">▪ Inspect equipment engine emissions regularly▪ All equipment is serviced and maintained to OEM requirements▪ Excessive equipment emissions to trigger out of service procedures	R a r e	S i g n i f	L o w

equipment.

		l y	i c a n t				i c a n t	
4	Release of dry powder emissions due to silo overpressure event	U n l i k e l y	S e r i o u s	L o w	<ul style="list-style-type: none"> ▪ Installation of reverse pulse filters and pressure release valves ▪ Maintenance of filter units on a three-monthly schedule ▪ Maintenance of infill controls on six-monthly schedule. ▪ Tanker blow-in inspections ▪ Silo hatches and dipping points are air tight 	R a r e	S i g n i f i c a n t	L o w
5	Release of dry powder emissions due to silo overfill event	U n l i k e l y	S e r i o u s	L o w	<ul style="list-style-type: none"> ▪ High level sensors installed as part of fail-safe fill system ▪ Maintenance of fail-safe fill system on six-monthly schedule ▪ Inspection and testing protocol of fail-safe fill system 	R a r e	S i g n i f i c a n t	L o w
Groundwater								

equipment.

1	Groundwater contamination	U n l i k e l y	S e r i o u s	L o w	<ul style="list-style-type: none"> ▪ Implement Monitoring and response plan ▪ Review monitoring results quarterly & action as necessary ▪ Ensure storage, handling and transport of dangerous goods are conducted in accordance with Australian Standards ▪ Identify, classify, quantify & appropriately store hazardous waste ▪ Develop & implement oil & fuel spillage controls ▪ Ensure hazardous waste is minimised ▪ Licenced contractors to remove hazardous waste from site ▪ Keep records of all hazardous waste movements ▪ Develop & implement oil & fuel spillage controls ▪ Implement bunding to appropriate areas ▪ Ensure adequate spill kits are available on site including adequate training ▪ Minimise hazardous waste storage quantities on site 	R a r e	S e r i o u s	L o w
Surface Water								
1	Discharge of sediment	P o s s i b l e	S e r i o u s	M e d i u m	<ul style="list-style-type: none"> ▪ Develop & implement Water Management Plan ▪ Implement Monitoring Program ▪ Review monitoring results quarterly & action as necessary ▪ Develop & implement Surface & Groundwater Response Plan ▪ Develop & implement Erosion & Sediment Control Plan ▪ Implement dust control procedures as per AIR 	U n l i k e l y	S e r i o u s	L o w
2	Discharge of hazardous materials	R a r e	S e v e r e	L o w	<ul style="list-style-type: none"> ▪ As per Surface Water (1) ▪ Ensure storage, handling and transport of dangerous goods are conducted in accordance with relevant Australian Standard ▪ Review monitoring results quarterly & action as necessary ▪ Identify classify, quantify & appropriately store hazardous waste ▪ Develop & implement oil & fuel spillage controls ▪ Implement bunding to appropriate areas ▪ Ensure adequate spill kits are available on site including adequate training for effective use ▪ Minimise hazardous waste storage quantities on site ▪ Appropriate location of hazardous materials storage areas to prevent off-site discharges 	R a r e	S e r i o u s	L o w

equipment.

Blasting								
1	Blasting impacts	U n l i k e l y	S e r i o u s	L o w	<ul style="list-style-type: none"> ▪ Develop & implement Blast Monitoring Program ▪ Develop & implement Blast Management Plan ▪ Detailed design & predictive modelling for each blast ▪ Monitoring of each blast with feedback to model ▪ Establish blast monitoring reference locations ▪ Notify sensitive receivers in accordance with site blasting plans ▪ Establish & advertise blasting hotline ▪ Drill accuracy is monitored via bore tracking procedures ▪ Establish site blasting procedures & train personnel including sirens etc ▪ Clear site to safe areas prior to blasts ▪ Clear off-site areas prior to blasts 	U n l i k e l y	S e r i o u s	L o w
2	Vibration / airblast damage to off-site structures	R a r e	S e v e r e	L o w	<ul style="list-style-type: none"> ▪ As per 1 ▪ Monitor sensitive areas & review blast design as necessary ▪ inspect sensitive areas pre & post all blasts 	R a r e	S e r i o u s	L o w
Ecology								
1	Damage to local flora	P o s s i b l e	S e r i o u s	M e d i u m	<ul style="list-style-type: none"> ▪ Develop & implement Biodiversity Action Plan ▪ Put in adequate physical protection measures including signage ▪ Monitor & report on site flora health regularly ▪ Suitable training re flora protection ▪ Removal of stock from sensitive areas ▪ Implement bushfire hazard reduction tasks ▪ Removal of feral animals from sensitive areas ▪ Noxious weed control in sensitive areas 	U n l i k e l y	S i g n i f i c a n t	L o w

equipment.

2	Damage to site fauna	U n l i k e l y	S e r i o u s	R a r e	<ul style="list-style-type: none"> As per Air Quality (1) Information re local WIRES for distressed or injured fauna 	R a r e	S e r i o u s	L o w
3	Dust pollution onto site sensitive ecological areas	U n l i k e l y	S e v e r e	M e d i u m	<ul style="list-style-type: none"> As per (1) Comply with site Management Plans Regular review of riparian areas (as per Management Plans) 	U n l i k e l y	S i g n i f i c a n t	L o w
Land								
1	Spill of liquid fuel whilst in storage	P o s s i b l e	S e v e r e	M e d i u m	<ul style="list-style-type: none"> Fuels stored according to Holcim's bunding requirements. Measures in place to ensure spills do not leave site boundaries ie diverting flow away from boundaries, stormwater drains. Bunding subject to regular inspection and maintenance 	S i g n i f i c a	U n l i k e l y	L o w

equipment.

						n t		
2	Spill during delivery of fuel to mobile equipment	P o s s i b l e	S e v e r e	M e d i u m	<ul style="list-style-type: none"> ▪ Breakaway couplings installed on mobile fuel delivery vehicles. ▪ Drivers stay with vehicle during refuelling ▪ Emergency spill kits located on fuel delivery vehicles. ▪ Spill response equipment is regularly inspected and maintained ▪ Mobile refuelling takes place in the pit ▪ Drivers trained in spill response procedures. ▪ Refuelling takes place in designated refuelling areas. 	U n l i k e l y	S i g n i f i c a n t	L o w
3	Spill during delivery of fuel to storage tank	P o s s i b l e	S e v e r e	M e d i u m	<ul style="list-style-type: none"> ▪ Supplier's fuel transfer procedure is known ▪ Fuel transfer is supervised against suppliers procedure 	U n l i k e l y	S i g n i f i c a n t	L o w
4	Spill of pre-coat	P o s s i	S e v e	M e d i	<ul style="list-style-type: none"> ▪ Monitor production to ensure minimum amount is used ▪ Pre-coat aggregate stockpile areas drain through an oil-water separator or similar device ▪ Pre-coats stored according to Holcim's bunding requirements. ▪ Measures in place to ensure spills do not leave site boundaries ie diverting flow away from boundaries, stormwater drains. 	U n l i k	S i g n i	L o w

equipment.

		b l e	r e	u m	<ul style="list-style-type: none"> Bunding subject to regular inspection and maintenance 	e l y	f i c a n t	
5	Improper storage of cementitious materials	L i k e l y	S i g n i f i c a n t	M e d i u m	<ul style="list-style-type: none"> Ensure water leachate is contained on site Quantities held on site are minimised or capped Location of stockpiles close to processing point Cementitious materials are managed in accordance with approval conditions Excess cementitious materials are disposed of in accordance with legislative requirements 	U n l i k e l y	S i g n i f i c a n t	L o w
6	Land contamination	L i k e l y	S i g n i f i c a n t	M e d i u m	<ul style="list-style-type: none"> Holcim land contamination strategy is known and applied 	U n l i k e l y	S i g n i f i c a n t	L o w

equipment.

7.2 Pollutant and Safety Equipment Information

Legislative requirements under the Protection of the Environment Operations (POEO) Act dictate that the site is to provide information for all pollutants that are used and stored on the site. This information is required as it assists personnel responsible for coordinating spill responses to more effectively manage spills.

This information must be presented as a manifest detailing the pollutants stored at the site, the location of these storage areas, and the safety equipment to be made available at these areas. A Pollution Information Data Sheet (PIDS) has been prepared that includes the following information for each pollutant:

- The intended use for the pollutant
- How the pollutant is stored
- SDS information
- Safety equipment or other devices that are used to minimise the risks to human health or the environment and to contain or control a pollution incident
- PPE needed to safely manage a spill of the pollutant
- Procedure for cleaning up a spill of the pollutant.

Refer to table 3 below for detail. In order to ensure the currency and reliability of the information in the PIDS, the information should be reviewed and updated on a monthly basis.

equipment.

Table 3: Pollutant Information Data Sheet and clean-up methods

Pollutant	Storage Location	Current SDS held Yes/No	Emission control equipment ⁽¹⁾	PPE ⁽¹⁾	Spill Clean Up Method ⁽¹⁾
Fuel	Above Ground Tank	Yes	Sand, earth, vermiculite	PVS gloves, safety glasses, goggles	<p><u>Large Spill</u></p> <p><u>Assess</u></p> <p>Quickly assess the spill:</p> <p>Decide whether to handle the situation by yourself or if you require help.</p> <p>Advise your team of the hazard</p> <p>Post a guard or barricade</p> <p>Can you stop the source of the spill?</p> <p><u>Ensure Personal Safety</u></p> <p>First priority is to ensure safety of yourself and others in the area</p> <p>Consider evacuation and isolation.</p> <p>Do you or others require PPE</p> <p>Check Safety Data Sheet</p>

equipment.

					<p><u>Secure</u></p> <p>Secure the spill If hazardous to public or other staff exists Post a guard immediately Enter barricades to prevent unintended access</p> <p><u>Contain</u></p> <p>Contain the spill quickly by surrounding with the booms which should be firmly secured in place. Find the source of the leak and stop it</p> <p>Emergency stop, cap, plug, move, adjust Move other containers from that area to a bunded area In the case of spillage on water, prevent the spread of product by the use of suitable barrier equipment.</p> <p><u>Prevent</u></p> <p>Prevent spillage to stormwater drains and entry into sewer, water courses, basements or confined areas.</p>
--	--	--	--	--	---

equipment.

					<p><u>Absorb</u></p> <p>Contain and collect spillage with non-combustible, absorbent material e.g. sand, earth, vermiculite or diatomaceous earth and place into a container according to local legislation.</p> <p>Recover product from the surface.</p> <p>Use spark-proof tools and explosive proof equipment. Dispose of via a licensed waste disposal contractor</p> <p><u>Disposal</u></p> <p>Contain and collect spillage with non-combustible, absorbent material e.g. sand, earth, vermiculite or diatomaceous earth and place into a container according to local legislation.</p> <p>Use spark-proof tools and explosive proof equipment. Dispose of via a licensed waste disposal contractor.</p> <p>Contaminated absorbent material may pose the same hazard as the spilt product. Monitor its disposal. The spill soiled bags need to be labelled and ear marked and placed in a leak proof</p>
--	--	--	--	--	---

equipment.

					<p>container which is locked. SDS should be made available.</p> <p><u>Reporting</u></p> <p>Incident and Corrective and Preventative action should be captured on the ICare</p> <p><u>Small Spill</u></p> <p>Stop leak without risk.</p> <p>Move containers from spill area</p> <p>Absorb with an inert material and place in appropriate waste disposal container.</p> <p>Use spark-proof tools and explosion-proof equipment.</p> <p>Dispose of via a licensed waste disposal contractor.</p>
Vehicle Fluids and Lubricants	Oil Store at Workshop	Yes	Sand, earth, vermiculite, barrier equipment (booms, floats etc.)	PVC Gloves, safety glasses, goggles	<p><u>Large Spill</u></p> <p><u>Assess</u></p> <p>Quickly assess the spill:</p>

equipment.

					<p>Decide whether to handle the situation by yourself or if you require help. Advise your team of the hazard Post a guard or barricade Can you stop the source of the spill?</p> <p><u>Ensure Personal Safety</u></p> <p>First priority is to ensure safety of yourself and others in the area Consider evacuation and isolation. Do you or others require PPE Check Safety Data Sheet</p> <p><u>Secure</u></p> <p>Secure the spill If hazardous to public or other staff exists Post a guard immediately Enter barricades to prevent unintended access</p> <p><u>Contain</u></p> <p>Contain the spill quickly by surrounding with the booms which should be firmly secured in place. Find the source of the leak and stop it Emergency stop, cap, plug, move, adjust</p>
--	--	--	--	--	--

equipment.

					<p>Move other containers from that area to a bunded area</p> <p>In the case of spillage on water, prevent the spread of product by the use of suitable barrier equipment.</p> <p><u>Prevent</u></p> <p>Prevent spillage to stormwater drains and entry into sewer, water courses, basements or confined areas.</p> <p><u>Absorb</u></p> <p>Contain and collect spillage with non-combustible, absorbent material e.g. sand, earth, vermiculite or diatomaceous earth and place into a container according to local legislation.</p> <p>Recover product from the surface.</p> <p>Use spark-proof tools and explosive proof equipment. Dispose of via a licensed waste disposal contractor</p> <p><u>Disposal</u></p>
--	--	--	--	--	--

equipment.

					<p>Contain and collect spillage with non-combustible, absorbent material e.g. sand, earth, vermiculite or diatomaceous earth and place into a container according to local legislation.</p> <p>Use spark-proof tools and explosive proof equipment. Dispose of via a licensed waste disposal contractor.</p> <p>Contaminated absorbent material may pose the same hazard as the spilt product. Monitor its disposal. The spill soiled bags need to be labelled and ear marked and placed in a leak proof container which is locked. SDS should be made available.</p> <p><u>Reporting</u></p> <p>Incident and Corrective and Preventative action should be captured on the ICare</p> <p><u>Small Spill</u></p> <p>Stop leak without risk.</p> <p>Move containers from spill area</p>
--	--	--	--	--	--

equipment.

					<p>Absorb with an inert material and place in appropriate waste disposal container.</p> <p>Use spark-proof tools and explosion-proof equipment.</p> <p>Dispose of via a licensed waste disposal contractor.</p>
Bitumen Emulsion	Above Ground	Yes	Sand, earth, vermiculite	PVC Gloves, safety glasses, goggles, overalls	<p><u>Accidental release</u></p> <ol style="list-style-type: none"> 1) In the event of a major spill, prevent spillage from entering drains or water courses. 2) Evacuate the spill area and deny entry to unnecessary and unprotected personnel. 3) Immediately call the relevant authorities. 4) Wear full protective clothing including eye/face protection. 5) All skin areas should be covered. 6) Stop leak if safe to do so, and contain the spill. 7) Absorb onto sand, vermiculite or other suitable absorbent material. 8) If the spill is too large try to create a dike to stop material spreading or going into drains or water-ways 9) Avoid using sawdust or other combustible material. 10) Sweep up and shovel or collect recoverable product into labelled containers for recycling or salvage, and dispose promptly

equipment.

					11) If it is possible that material harm to the environment has occurred relevant personnel should be contacted
Pre-coat Oil	Above Ground Precoat Tank	Yes	Sand, earth, vermiculite	PVC Gloves, safety glasses, goggles, overalls	<p><u>Accidental release</u></p> <p><u>Assess</u></p> <p>First priority is to ensure safety of yourself and others in the area Consider evacuation and isolation. Do you or others require PPE</p> <p>Check Safety Data Sheet</p> <p>In the event of a major spill, prevent spillage from entering drains or water courses.</p> <p>Evacuate the spill area and deny entry to unnecessary and unprotected personnel.</p> <p>Immediately call the relevant authorities.</p> <p><u>Ensure Personal Safety</u></p>

equipment.

					<p>Wear full protective clothing including eye/face protection.</p> <p>All skin areas should be covered.</p> <p>Stop leak if safe to do so, and contain the spill.</p> <p><u>Secure</u></p> <p>Secure the spill If hazardous to public or other staff exists Post a guard immediately Enter barricades to prevent unintended access</p> <p>Absorb onto sand, vermiculite or other suitable absorbent material.</p> <p>If the spill is too large try to create a dike to stop material spreading or going into drains or water-ways</p> <p>Avoid using sawdust or other combustible material.</p> <p><u>Contain and Disposal</u></p>
--	--	--	--	--	---

equipment.

					<p>Sweep up and shovel or collect recoverable product into labelled containers for recycling or salvage, and dispose promptly.</p> <p>Use spark-proof tools and explosive proof equipment. Dispose of via a licensed waste disposal contractor.</p> <p>If it is possible that material harm to the environment has occurred relevant personnel should be contacted</p> <p><u>Reporting</u></p> <p>Incident and Corrective and Preventative action should be captured on the ICare.</p>
Hardeners and Resins	Workshop Pint Store	Yes	Sand, earth, vermiculite	Safety glasses, PVC gloves, Respirator	<p><u>Major Spills</u></p> <p><u>Large Spill</u></p> <p><u>Assess</u></p> <p>Quickly assess the spill:</p> <p>Decide whether to handle the situation by yourself or if you require help. Advise your team of the hazard Post a guard or barricade Can you stop the source of the spill?</p>

equipment.

					<p><u>Ensure Personal Safety</u></p> <p>First priority is to ensure safety of yourself and others in the area Consider evacuation and isolation. Do you or others require PPE Check Safety Data Sheet</p> <p><u>Secure</u></p> <p>Secure the spill If hazardous to public or other staff exists Post a guard immediately Enter barricades to prevent unintended access</p> <p><u>Contain</u></p> <p>Contain the spill quickly by surrounding with the booms which should be firmly secured in place. Find the source of the leak and stop it Emergency stop, cap, plug, move, adjust Move other containers from that area to a bunded area</p> <p>In the case of spillage on water, prevent the spread of product by the use of suitable barrier</p>
--	--	--	--	--	---

equipment.

					<p><u>Prevent</u></p> <p>Prevent spillage to stormwater drains and entry into sewer, water courses, basements or confined areas.</p> <p><u>Absorb</u></p> <p>Contain and collect spillage with non-combustible, absorbent material e.g. sand, earth, vermiculite or diatomaceous earth and place into a container according to local legislation.</p> <p>Recover product from the surface.</p> <p>Use spark-proof tools and explosive proof equipment. Dispose of via a licensed waste disposal contractor</p> <p><u>Disposal</u></p> <p>Contain and collect spillage with non-combustible, absorbent material e.g. sand, earth, vermiculite or diatomaceous earth and place into a container according to local legislation.</p>
--	--	--	--	--	--

equipment.

					<p>Use spark-proof tools and explosive proof equipment. Dispose of via a licensed waste disposal contractor.</p> <p>Contaminated absorbent material may pose the same hazard as the spilt product. Monitor its disposal. The spill soiled bags need to be labelled and ear marked and placed in a leak proof container which is locked. SDS should be made available.</p> <p><u>Reporting</u></p> <p>Incident and Corrective and Preventative action should be captured on the ICare.</p> <p><u>Minor Spills</u></p> <p>Contain spillage</p> <p>Avoid breathing vapours and contact with skin and eyes</p> <p>Control contact using PPE</p> <p>Contain and absorb with sand, earth, inert material, vermiculite etc.</p> <p>Small spills should be covered with inorganic absorbents and disposed of properly. Organic</p>
--	--	--	--	--	--

equipment.

					absorbents (ie. sawdust) may ignite when contaminated with amines in closed containers
Dry Powders	Pugmill Silo	Yes	Access to council sweeper, soil, sand, vermiculite	Safety glasses, PVC Gloves,	<p><u>Accidental Release Measures</u></p> <p>Emergency procedures: Prevent entry to area by unprotected personnel. Methods and material for containments and clean up</p> <ol style="list-style-type: none"> 1) Vacuum or wet sweep material avoiding generation of dusts. 2) A fine water spray should be used to suppress dust when sweeping. 3) Product dampened with water may be collected with a clean shovel. 4) Seal all spilled product and wastes in vapour tight labelled plastic containers for reuse/recycle where possible or eventual disposal.
Welding gas	Gas Store at Workshop	Yes	Ventilation	Respirator	<p><u>Occupational Release:</u></p> <ol style="list-style-type: none"> 1) Avoid heat, flames, sparks and other sources of ignition. 2) Stop leak if possible without personal risk. 3) Reduce vapours with water spray 4) Keep unnecessary people away, isolate hazard area and deny entry. 5) Remove sources of ignition. 6) Ventilate closed spaces before entering.

equipment.

Effluent	Septic Tank	No	Access to council or commercial contractor vacuum/ pump truck,, soil, sand, bleach, hydrated lime	PVC Gloves, goggles, overalls	<u>Accidental Release Measures</u> <ol style="list-style-type: none"> 1) Contaminated area must be clearly marked or cordoned off to restrict access. 2) Protective clothing should be worn when cleaning up a sewage spill. 3) If the spilled material can't be recovered using hand tools, a commercial vacuum / pump truck should be called to remove all visible liquid and solid material. 4) When the area is visibly clean, either a chlorine / water solution or hydrated lime should be applied to the spill area to disinfect. 5) If a major spill has occurred hydrated lime should be applied to the area in place of chlorine bleach 6) .Enough hydrated lime should be applied to raise the pH to at least 12. By raising the pH to 12 for at least 1 hour, the area will be disinfected. 7) Because lime is a caustic material, access to the area treated with lime must be restricted during the disinfection period.

equipment.

Surfactant - Dustchem 76	Dustchem dust suppression container at the plant	Yes	Soil, sand, vermiculite	Safety glasses, PVC gloves	<ol style="list-style-type: none">1. Restrict access to area2. Provide PPE3. Remove chemicals which react with spill of material4. Spills are slippery5. Contain spill or leak6. Do not allow entry to drains or water ways7. Spilled material should be contained by dyking with inert material, sand, soil etc.8. Solutions can be recovered or carefully diluted with water.
-------------------------------------	--	-----	-------------------------	----------------------------	--

⁽¹⁾ This information is drawn from a review of the SDS or manufacturer / supplier technical information

equipment.

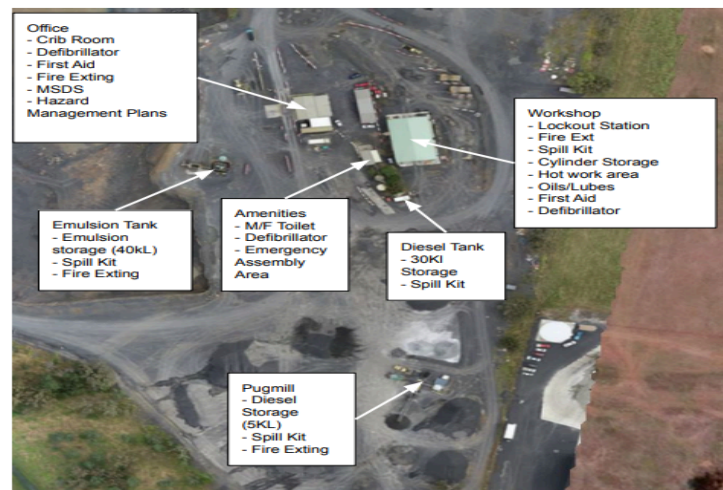
7.3 Emergency Response Map

In addition to the PIDS the site needs to prepare an emergency response map that provides the following information;

- address of site
- location of pollutant storage
- location of safety equipment
- emergency evacuation / muster points
- stormwater drains / flow paths
- sensitive receivers
- sediment dam overflow locations
- location of SDS
- surrounding area that is likely to be affected by a pollution incident
- discharge location of stormwater drains to nearest water course or water body

Existing site maps that have been developed to comply with Holcim SHE system requirement 1.84 may be used if all the required items have been included. If an existing map is not available it should be created.

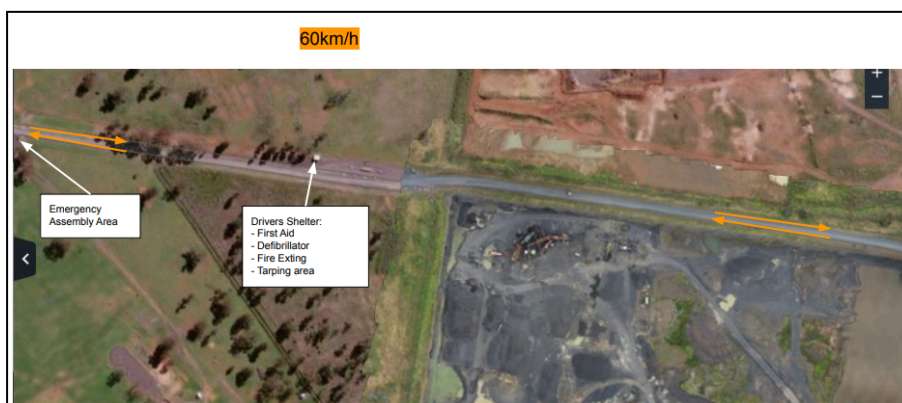
It is important to clearly identify these items so as to be able to respond in an emergency situation.



equipment.



equipment.



equipment.

7.4 PIRMP Review

Review of PIRMP will be undertaken to check that the information is accurate and current and that the plan is capable of being implemented in a workable and effective manner. Reviewing shall be undertaken in the following ways:

The PIRMP will be tested annually and any identified updates or changes will be made. The PIRMP will be tested and reviewed within one month from the date of any pollution event that triggers this PIRMP. The review will also consist of assessment of any additional hazards and control measures.

In addition to site evacuation drills, a mock environmental incident will be done once a year to ensure all site personnel are following training and correct procedures. The mock scenario will be set and all the actions will be captured on the check sheet. Based on these mock incidents, the Site manager and the Planning and Environmental Coordinator will review the site personnel preparedness and site procedures to identify gaps or areas for improvement. Records of the drill will be maintained, including follow up of opportunities for improvement identified during emergency drills.

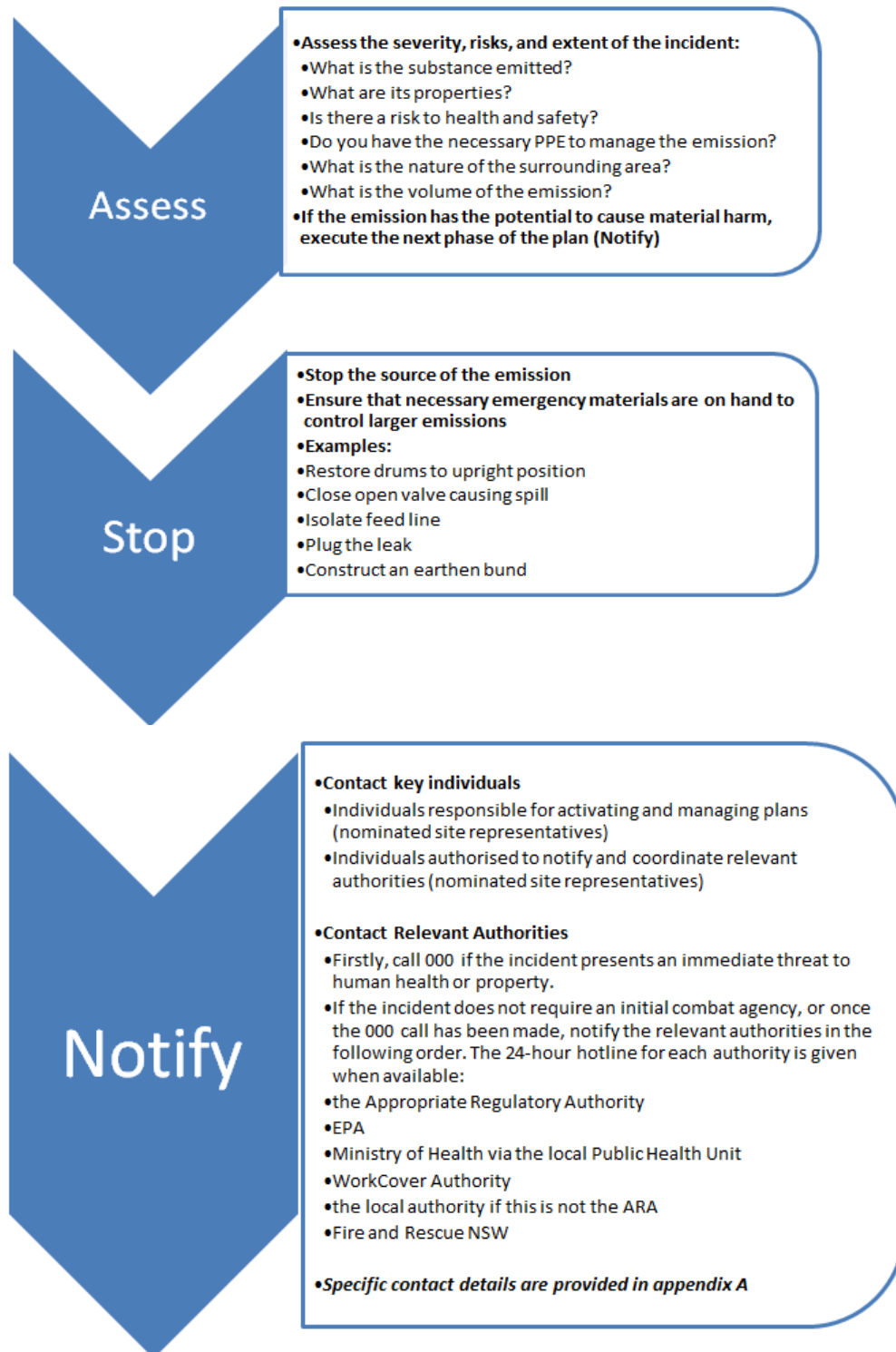
7.5 Typical Holcim Response process

If it is suspected that an incident may cause material environmental harm the Pollution Incident Management Response Plan will be executed. This plan is based on seven phases:

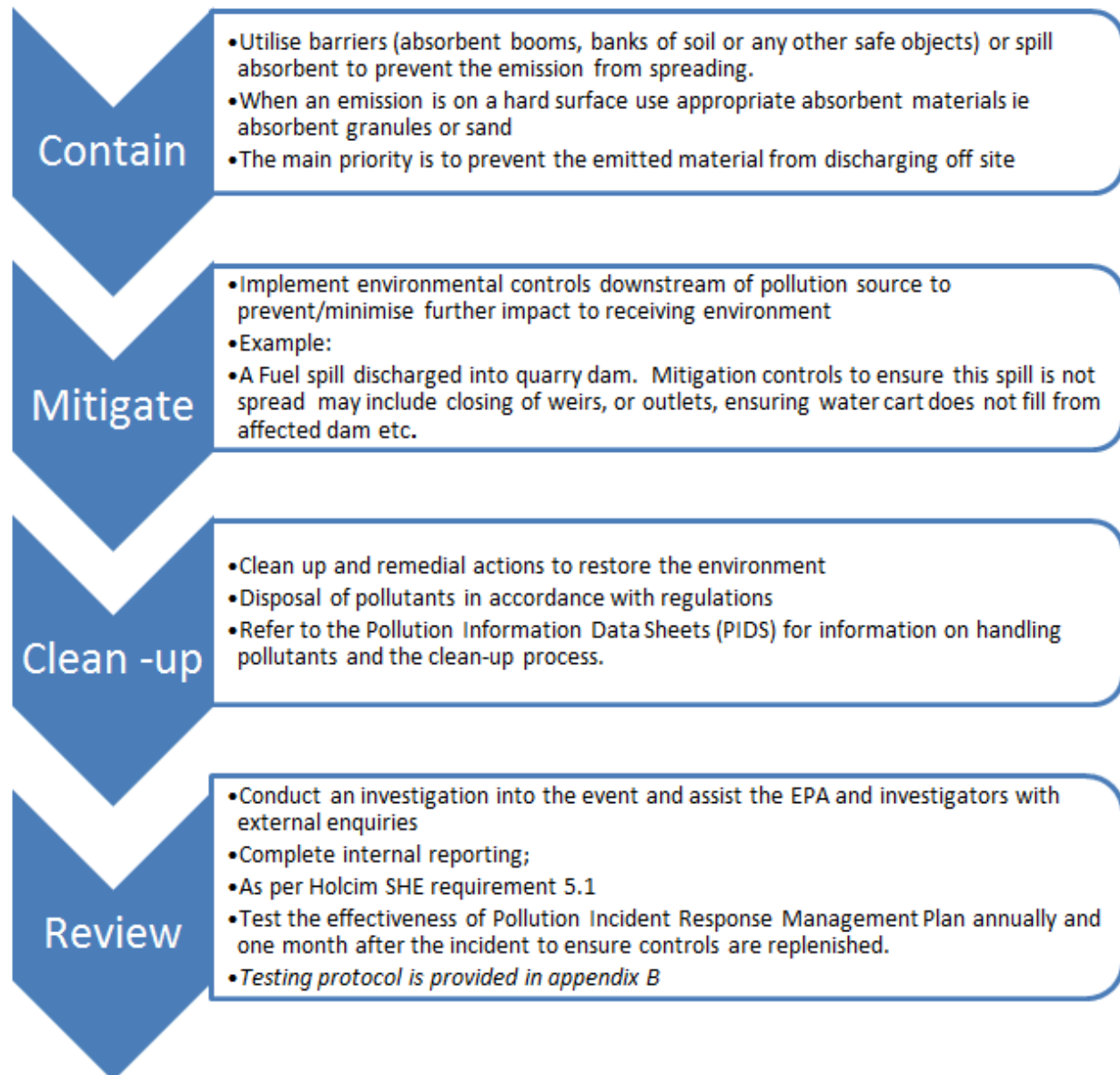
- 1) Assess
- 2) Stop
- 3) Notify
- 4) Contain
- 5) Mitigate
- 6) Clean up
- 7) Review

Details of the requirements and responsibilities for each phase are explained in the following page.

equipment.



equipment.



equipment.

7.6 Communication Strategy

It is a legal requirement of the Protection of the Environment Operations (POEO) Act, to notify key stakeholders in neighbouring properties that may be affected by an incident.

Communicating with neighbours and the community in the event of a spill is vital as they have a right to know about any spill that can potentially lead to material harm to their properties or themselves. The communication strategy in the PIRMP provides sites with a method of communicating with key stakeholders.

Key stakeholders can include neighbouring residential and/or commercial properties, sensitive receivers i.e. farms, hospitals schools etc. Consideration must be given to sensitive receivers that may be affected if the emission reaches a water body. For example, a farmer that is cultivating crops down river from your site will need to be informed of a spill to prevent him spraying his crops with polluted irrigation water.

The PIRMP must include details of the mechanisms that will be used for providing early warnings and regular updates to the owners and occupiers of premises who may be affected by an incident occurring at the premises.

The communication strategy should also make reference to any actions or arrangements that will be in place to minimise the risk of harm to any persons who will be on the premises or who are likely to be on the premises at the time of an incident. This is a legislative requirement that needs to be included in the PIRMP.

For a table detailing the communication strategy for this site:

Refer to Appendix C – Community Notification Strategy

equipment.

7.6 Staff Training

Sites need to develop a toolbox talk based on the PIRMP. This training should be delivered to all appropriate personnel on site.

Frequency of training

Training should be repeated annually, and after each update.

How Records of training are kept

Training records should be stored on site. The records are to be made available to relevant authorities on request.

7.7 Continual Improvement

It is a legislative requirement for this plan to be tested and updated on an annual basis and within one month of an incident.

To complete this requirement a Pollution Incident Response Test Checklist has been prepared and provided as Appendix B. The checklist includes the major elements of the plan that require testing:

- Contact numbers
- Evacuation drills
- Desktop assessment
- Environmental controls & PPE

Desktop assessments require site personnel, responsible for testing the plan, to select a scenario from the hazard and impact register (table 2) and ensure that all the required controls for the scenario are in place. During the desktop assessment environmental control and PPE equipment supplies should be inspected to ensure that they are functional and that there are enough materials to ensure that emissions relating to the scenario can be controlled effectively and safely.

equipment.

Appendix A - Emergency Contact Details

equipment.

Contacts	Phone Number
Individuals responsible for activating the plans and managing the response	Leeroy Wall 0447523471
Individuals Authorised to Notify and Coordinate Relevant Authorities	Leeroy Wall 0447523471
Emergency Services	000
EPA	131 555
The Ministry of Health via the local Public Health Unit (List of NSW numbers www.health.nsw.gov.au/publichealth/infectious/phus.asp)	Dubbo Base Hospital (02) 6885 8666 if no answer: 0418 866 397
Mine Safety Department	1300 814 609
Local Council	Dubbo Regional Council (02) 6801 4000
Fire and Rescue NSW	000
Additional Contacts relevant to the licensee's premises	Security Service: Western Plains Security: (02) 6885 6440 Emergency Procedures Checklist

equipment.

Appendix B - Pollution Incident Response Test Checklist

equipment.

Date: 27/11/2024

Site: Dubbo Quarry

Address: 22L Sheraton Road, Dubbo NSW 2830

Pollution Incident Scenario: Spill drum of engine oil in workshop

Instructions

1. Select an Environmental Incident applicable to the site to test in a Pollution Scenario (this may include a major spill, equipment failure or breaches of license consent that may cause impacts onsite and to the surrounding community);
2. Using the scenario conduct a desktop review using the Test Checklist as a prompt to ensure that each component of the PIRMP is up to date;
3. Sign off the checklist, scan and send to the NSW Planning & Environmental Coordinator;
4. Planning & Environmental Coordinator will make amendments to the plans and submit these to the site managers for review and approval;
5. Site Managers to hold a tool box talk with staff on the details of the PIRMP and keep a copy of the PIRMP onsite for future reference.

Are all contact details within the plan current and up to date?	Phone Numbers	
	Currency	Updated Number
Individuals responsible for activating the plans and managing the response	Yes	
Individuals Authorised to Notify and Coordinate Relevant Authorities	Yes	
Emergency Services	Yes	

equipment.

EPA	Yes	
The Ministry of Health via the local Public Health Unit	Yes	
WorkCover Authority	Yes	
Local Council	Yes	
Fire and Rescue NSW	Yes	
Additional Contacts relevant to the licensee's premises	Yes	
Other Organisations or agencies that need to be advised of the incident	Yes	

Environmental Hazards and Control Standards	Yes/ No	Actions
Are the descriptions of environmental hazards up to date?	Yes	
Are the potential and likelihood of incidents that could occur still correct and relevant to the site operations?	Yes	
Are the pre-emptive actions for risk management of the relevant activity correct and relevant to the site?	Yes	
Is there an inventory of pollutants (including quantities of pollutants onsite)?	Yes	

equipment.

Is the listed safety equipment & PPE correct and up to date?	Yes	
Is there a map/s located onsite detailing the following; - The site and the surrounding area likely to be affected in the event of an incident - The Locations of storage/ holding points of pollutants - Stormwater drains and discharge points offsite	Yes	Likely to change early 2025
Are the nature and objectives of staff training set out in the plan?	Yes	
Are there details of mechanisms for providing early warnings and regular updates to the owners and occupiers?	Yes	
Is there a copy of the plan onsite and up to date?	Yes	

Has there been an evacuation drill in the last 12 months? Yes

Date: 28/11/2024

Notes:

- Adequate signage on workshop
- Review ChemAlert for current SDS

Improvements to the Pollution Incident Response Management Plan:

- Ensure all lubricants are stored on bunds & adequate spill response equipment available as per checklist

Comments / Recommendations / Review

- Critical for catchment container to be situated in correct location
- Ensure spill kit is situated in the correct location and not impeded
- SHE Schedule captures inspections

equipment.

Pollution Incident Response Test Checklist Assessor: Leeroy Wall

Signed:

A square image containing a handwritten signature in dark ink. The signature is stylized and appears to be 'L. Wall'.

Appendix C – Community Notification Strategy

equipment.

If there is an Environmental Incident that has the potential to cause harm to the following stakeholders they will be contacted by TELEPHONE

Stakeholder Component	Name	Contact Information
Western Downstream Neighbour	Lynn Cameron	26R Sheraton Road, Dubbo, NSW, 2830 0468 373 996
Northern Neighbour	Regional Hard Rock quarry	“South Keswick” Sheraton Road, Dubbo, NSW, 2830 Wes: 0411 441 680/Damian:0448 853 355
Downstream Neighbour	Peter Bateman	Sheraton Road, Dubbo, NSW,2830 0407 415 337
Southern Neighbour	Skinner Partnership	“Wembley Park” 02 6884 1519 / 0407 252 703
Western Neighbour	David Ringland	Sheraton Road, Dubbo, NSW, 2830 02 6885 2866