

Intended for

**Holcim (Australia) Pty Ltd**

Document type

**Report**

Date

**February 2026**

# Lynwood Quarry Quarterly Noise Monitoring Assessment

Quarter 1 2025

# Lynwood Quarry Quarterly Noise Monitoring Assessment

## Quarter 1 2025

Project name **NSW Environmental Monitoring 2024-2025**  
Project no. **318001800**  
Recipient **Wayne Beattie**  
Document type **Report**  
Version **1**  
Date **13/02/2026**  
Prepared by **Jake Bourke, Brodie Wood**  
Checked by **Arnold Cho**  
Approved by **Gavan Butterfield**  
Description **Data collected on 4 and 5 March 2025 for the quarterly period ending March 2025 at Marulan, NSW, as part of the noise monitoring program**

Ramboll  
The Arc, 45a Watt St  
Newcastle, NSW 2300  
Australia

T +61 2 4962 5444  
<https://www.ramboll.com/>

## Contents

<b>Abbreviations and Definitions</b>	<b>2</b>
<b>1. Overview</b>	<b>4</b>
1.1 Project Driver	4
1.2 Site Location and Sensitive Receptors	4
<b>2. Noise Criteria</b>	<b>6</b>
<b>3. Methodology</b>	<b>7</b>
3.1 Meteorological Conditions	7
<b>4. Results and Discussion</b>	<b>8</b>
4.1 Location N1	8
4.2 Location N2	9
4.3 Location N3	10
4.4 Location N4	11
<b>5. Conclusion</b>	<b>12</b>
<b>6. References</b>	<b>13</b>

### Table of Tables

Table 2-1: Monitoring locations and noise criteria	6
Table 3-1: Classification of Atmospheric Stability (NSW EPA, 2014)	7
Table 4-1: Noise survey results and observations for Location N1	8
Table 4-2: Noise survey results and observations for Location N2	9
Table 4-3: Noise survey results and observations for Location N3	10
Table 4-4: Noise survey results and observations for Location N4	11

### Table of figures

Figure 1: Noise monitoring locations	5
--------------------------------------	---

## Abbreviations and Definitions

	Description
$\Delta T$	Vertical Temperature Difference, i.e. the measured difference in ambient temperature between two elevations on the same tower. It is defined as the upper-level temperature measurement minus the lower-level temperature measurement.
°	Degree
Ambient Noise	The all-encompassing noise within a given environment. It is the composite of sounds from many sources, both near and far.
Background noise	The underlying level of noise present in the ambient noise, excluding the noise source under investigation, when extraneous noise is removed. This is described using the LA90 descriptor (see below).
C	Celcius
CCAM	Conformal Cubic Atmospheric Model
CSIRO	Commonwealth Scientific and Industrial Research Organisation
dB	Abbreviation for decibel, a measure of sound equivalent to 20 times the logarithm (to base 10) of the ratio of a given sound pressure to a reference pressure, and 10 times the logarithm of a given sound power to a reference power.
dB(A)	A measure of A-weighted sound levels. A Weighting is an adjustment made to the sound level measurement to approximate the response of the human ear.
EPA	Environment Protection Authority
EPL	Environment Protection Licence
Extraneous noise	Noise resulting from activities that are not typical of the area. Atypical activities may include construction, and traffic generated by holiday periods. Normal daily traffic is not extraneous noise.
m	Metre
LA1	The noise level, measured in dB(A), which is exceeded for 1 per cent of the measurement period.
LA1(1min)	The noise level, measured in dB(A), which is exceeded for 1 per cent of the time over a 1-minute measurement period, i.e., is exceeded for 0.6 seconds. This measure can approximate to the maximum noise level but may be less if there is more than 1 noise event during this 0.6 second period.
LA10	The noise level, measured in dB(A), which is exceeded for 10 per cent of the time.
LA90	The noise level, measured in dB(A), which is exceeded for 90 per cent of the time, referred to as the background noise level. This is considered to represent the background noise (see above).
LAeq	The level of noise equivalent to the energy average of noise levels occurring over a defined measurement period.
LAeq (period)	The average equivalent noise level, measured in dB(A), during a measurement period (e.g., 15-minute, day, evening, or night).
LAm <sub>ax</sub>	The A-weighted sound pressure level that represents the maximum noise level measured over the time that a given sound is measured.
NATA	National Association of Testing Authorities
NMA	Noise Monitoring Assessment
NMP	Noise Management Plan
NPFI	Noise Policy for Industry 2017

<b>Description</b>	
NSW	New South Wales
s	Second
SPL	The Sound Pressure Level. Sound pressure is the fluctuation in air pressure, from the steady atmospheric pressure, created by sound. The sound pressure level is the sound pressure expressed on a decibel scale.
TAPM	The Air Pollution Model

Source: Noise Guide for Local Government (NSW EPA, 2023).

## 1. Overview

### 1.1 Project Driver

Ramboll Australia Pty Ltd (Ramboll) has been commissioned by Holcim (Australia) Pty Ltd (Holcim) to complete a Noise Monitoring Assessment (NMA) for Lynwood Quarry ("the quarry") at Marulan, NSW.

This NMA was done in accordance with the following documents:

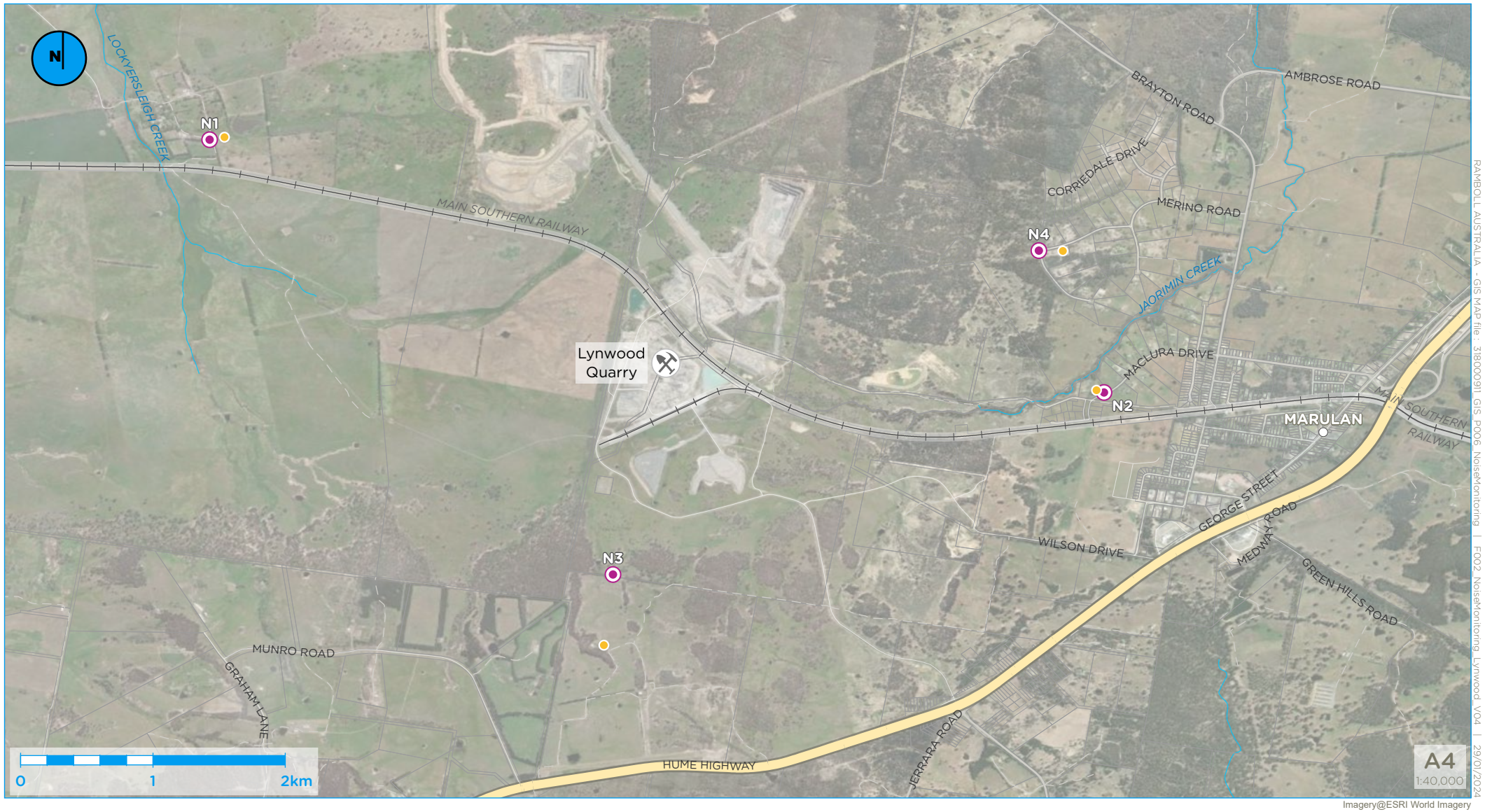
- Noise Policy for Industry (NPFI) (NSW EPA, 2017)
- Lynwood Quarry Noise Management Plan (NMP) (Holcim Australia, 2019)
- Environment Protection Licence (EPL) number 12939 (NSW EPA, 2021)
- Development Consent DA 128-5-2005 (Minister for Planning, 2017)
- Australian Standard AS 1055:2018 Acoustics – Description and measurement of environmental noise (Standards Australia, 2018)
- Australian Standard AS/NZS IEC 61672.1:2019 Electroacoustics – Sound level meters, Part 1: Specifications (Standards Australia and Standards New Zealand, 2019)
- IEC 60942:2017 Electroacoustics - Electroacoustics – Sound calibrators (International Standard, 2017).

This NMA has been undertaken for the quarterly period January to March 2025, and forms part of the monitoring program to determine compliance with conditions of the Development Consent.

### 1.2 Site Location and Sensitive Receptors

The quarry is located at 278 Stoney Creek Road, approximately 4 km to the west of the Marulan railway station and town centre. Sensitive receptors surrounding the quarry are primarily rural and residential (to the west of the site). The Hume Highway is located to the east and south of the quarry. Highway traffic (Hume Highway) is a dominant noise source.

The monitoring locations with respect to the quarry and assessed receivers are presented in the locality plan in **Figure 1**.



- Legend**
- Noise monitoring location
  - Residence/noise assessment location



**Figure 1: Noise monitoring locations at Lynwood Quarry**

## 2. Noise Criteria

**Table 2-1** includes the applicable noise criteria outlined in the Development Consent and the EPL for the 16 residential receivers surrounding the quarry (L1–L16), and the four monitoring locations adopted from the NMP that are deemed representative and applicable for this NMA (N1–N4). It should be noted that the original location of N3 (on the northern boundary of 16038 Hume Highway, Marulan) continues to be inaccessible and as such N3 has been relocated to a nearby residential receiver approximately 900 m to the west on Munro Road, Marulan (**Figure 1**) where all future monitoring will take place. This revised location is deemed representative and applicable for this NMA.

**Table 2-1: Monitoring locations and noise criteria**

EPL ID	Receiver Description	Monitoring Locations		Day <sup>1</sup>	Evening <sup>2</sup>	Night <sup>3</sup>	Night <sup>3</sup>
		NMP ID	Address	LAeq (15min)	LAeq (15min)	LAeq (15min)	LA1 (1min)
dBA							
L1	West of the Granite Pit.	N1	1114 Carrick Road, Marulan	35	35	35	45
L2	Northeast of the site	-	-	35	35	35	45
L3	Northeast of the site	-	-	35	35	35	45
L4	East of the site in Marulan	-	-	35	37	35	46
L5	East of the site in Marulan	-	-	35	35	35	46
L6	East of the site in Marulan	N2	End of Maclura Drive, Marulan	35	37	36	46
L7	East of the site in Marulan	-	-	38	38	35	55
L8	East of the site in Marulan	-	-	39	38	36	55
L9	East of the site in Marulan	-	-	39	39	37	56
L10	Southeast of the site in Old Marulan	-	-	42	42	40	53
L11	South of the site	N3	Off Marulan South Road, near DD8	35	35	36	47
L12	East of the site in Marulan	N4	Corner of Dorsett and Suffolk Road, Marulan	37	37	36	47
L13	East of the site in Marulan	-	-	40	38	37	47
L14	South of the site	-	-	35	35	35	47
L15	South of the site	-	-	35	35	35	47
L16	Northeast of the site	-	-	35	35	35	45

<sup>1</sup> 7 am–6 pm Monday to Saturday and 8 am–6 pm Sunday and public holidays

<sup>2</sup> 6 pm–10 pm Monday to Sunday

<sup>3</sup> 10 pm–7 am Monday to Saturday and 10 pm–8 am Sunday and public holidays

### 3. Methodology

The monitoring program was developed in accordance with the procedures described in Australian Standard AS 1055:2018 and the Approval Documents referenced in Section 0. The measurements were carried out using a RION Sound Level Meter NL-52 on Tuesday 4 March 2025 and Wednesday 5 March 2025. The acoustic instrumentation used carries current National Association of Testing Authorities (NATA) calibration and complies with AS/NZS IEC 61672-1:2019 class 1. Calibration of all instrumentation was checked prior to and following measurements using a Pulsar Acoustic Calibrator 105 which carried a current NATA calibration and complies with IEC 60942:2017. Drift in calibration did not exceed ±0.3 dBA.

Attended noise monitoring was conducted for 15-minutes in duration during the day, evening, and night periods over two days at each monitoring location. Where possible, throughout each measurement the operator quantified the contribution of each significant noise source. Where the quarry was not distinctly audible during the attended monitoring, the quarry contribution is estimated to be at least 10 dBA below the ambient noise level, as determined by the LA90.

#### 3.1 Meteorological Conditions

Meteorology has an important influence on noise monitoring assessment. An onsite meteorological station with data recorded at 10m height has been used to adopt wind direction, wind speed and rain data to inform this assessment. Temperature data has been adopted from the Commonwealth Scientific and Industrial Research Organisation (CSIRO) Conformal Cubic Atmospheric Model (CCAM) and modelled using The Air Pollution Model (TAPM) to determine the atmospheric category as outline in **Table 3-1**.

**Table 3-1: Classification of Atmospheric Stability (NSW EPA, 2014)**

Stability Classification	Pasquill Stability Category	Ambient temperature change with height (°C/100m)
Extremely unstable	A	$\Delta T \leq -1.9$
Moderately unstable	B	$-1.9 < \Delta T \leq -1.7$
Slightly unstable	C	$-1.7 < \Delta T \leq -1.5$
Neutral	D	$-1.5 < \Delta T \leq -0.5$
Slightly stable	E	$-0.5 < \Delta T \leq 1.5$
Moderately stable	F	$1.5 < \Delta T \leq 4.0$
Extremely stable	G	$\Delta T > 4.0$

As stated in the Development Consent, the noise criteria in **Table 2-1** applies under all meteorological conditions except the following:

- Monitoring locations for the collection of representative noise data
- Wind speeds greater than 3 m/s at 10 metres above ground level
- Stability category F temperature inversion conditions and wind speeds greater than 2 m/s at 10 metres above ground level
- Stability category G temperature inversion conditions.

Appendix 10 of the Development Consent also specifies that except for wind speed at microphone height, the data to be used for determining meteorological conditions must be that recorded by a suitable meteorological station operating in the vicinity of the site that complies with the requirements in the Approved Methods for Sampling of Air Pollutants in New South Wales guideline.

## 4. Results and Discussion

### 4.1 Location N1

Noise monitoring at location N1 was conducted on Tuesday 4 March 2025 and Wednesday 5 March 2025 with results presented in **Table 4-1**. Noise from the quarry was inaudible at N1 during the day monitoring period. The site was audible at N1 during the evening and night monitoring period, with an industrial hum. The ambient noise environment was dominated by trees/wind, birds, cicadas and a passing train. The results are deemed to satisfy the established noise criteria and indicate that noise emissions from Lynwood Quarry did not contribute to noise nuisance at the time of the monitoring.

**Table 4-1: Noise survey results and observations for Location N1**

Date	Time	Descriptor (dBA)			Meteorology (Handheld at microphone height)	Onsite Met Station (10m height)	Apparent Noise Source, Description and SPL (dBA)	Lynwood Quarry LAeq(15min) Contribution (dBA)	LAeq(15min) Criteria (dBA)	Lynwood Quarry LA1(1min) Contribution (dBA)	LA1(1min) Criteria (dBA)
		LA1	LAeq	LA90							
5-03-25	7:00am to 7:15am (Day)	70.5	56.6	28.8	WD: n/a WS: 0 m/s Rain: Nil	WD: 122° WS: 0.8 m/s Rain: Nil Stability Category: D <sup>1</sup>	Background birds, insects 28-36 Birds 36-58 Train 40-74 Quarry inaudible	<19	35	n/a	n/a
4-03-25	7:41pm to 7:56pm (Evening)	44.1	40.8	39.2	WD: 71° WS: 2.3 m/s Rain: Nil	WD: 113° WS: 0.6 m/s Rain: Nil Stability Category: D <sup>1</sup>	Background wind, trees, cicadas, Holcim industrial hum 37-49 Magpies 50-56 Quarry audible	<35 - 37 <sup>2</sup>	35	n/a	n/a
5-03-25	6:34am to 6:49am (Night)	51.5	38.3	29.4	WD: n/a WS: 0 m/s Rain: Nil	WD: 116° WS: 0.8 m/s Rain: Nil Stability Category: D <sup>1</sup>	Background Holcim industrial hum, insects 28-36 Birds 36-58 Quarry audible	<29 <sup>3</sup>	35	n/a <sup>4</sup>	45

<sup>1</sup> Temperature data sourced from CSIRO CCAM and modelled using TAPM to determine Stability Category.

<sup>2</sup> Measured LAeq value of 40.8 was dominated by flora and fauna, so unable to separate extraneous noise from Holcim noise but estimated to be 35 – 37 dBA at the assessment location.

<sup>3</sup> Measured LAeq value of 38.3 was dominated by fauna, so unable to separate extraneous noise from Holcim noise but estimated to be less than 29 dBA at the assessment location.

<sup>4</sup> Measured LA1 value of 51.5 was dominated by fauna, so unable to estimate contribution for quarry at the assessment location.

#### 4.2 Location N2

Noise monitoring at location N2 was conducted on Tuesday 4 March 2025 and Wednesday 5 March 2025 with results presented in **Table 4-2**. Noise from the quarry was inaudible at N2 during the day, evening, and night monitoring periods. The ambient noise environment was dominated by motorway traffic, wind, birds, trees, and insects. The results satisfy the established noise criteria and indicate that noise emissions from Lynwood Quarry did not contribute to noise nuisance at the time of the monitoring.

**Table 4-2 Noise survey results and observations for Location N2**

Date	Time	Descriptor (dBA)			Meteorology (handheld at microphone height)	Onsite Met Station (10m height)	Apparent Noise Source, Description and SPL (dBA)	Lynwood Quarry LAeq (15min) Contribution (dBA)	LAeq (15min) Criteria (dBA)	Lynwood Quarry LA1(1min) Contribution (dBA)	LA1 (1min) Criteria (dBA)
		LA1	LAeq	LA90							
5-03-25	10:41am to 10:56am (Day)	50.4	43.1	40.1	WD: 267° WS: 2.4 m/s Rain: Nil	WD: 95° WS: 0.5 m/s Rain: Nil Stability Category: D <sup>1</sup>	Background traffic, birds, wind, trees 40-60 Quarry inaudible	<30	35	n/a	n/a
4-03-25	6:42pm to 6:57pm (Evening)	37	43.8	39.5	WD: 92° WS: 1.2 m/s Rain: Nil	WD: 93° WS: 0.5 m/s Rain: Nil Stability Category: D <sup>1</sup>	Background traffic, trees, birds, insects, wind 37-44 Magpies 42-50 Train 45-60 Quarry inaudible	<30	37	n/a	n/a
5-03-25	5:37am to 5:52am (Night)	60.3	46.8	41.6	WD: n/a WS: 0 m/s Rain: Nil	WD: 108° WS: 0.8 m/s Rain: Nil Stability Category: D <sup>1</sup>	Background traffic, insects 40-60 Train 45-66 Quarry inaudible	<32	36	n/a <sup>2</sup>	46

<sup>1</sup> Temperature data sourced from CSIRO CCAM and modelled using TAPM to determine Stability Category.

<sup>2</sup> Measured LA1 value of 60.3 was dominated by traffic, fauna and a train, so unable to estimate contribution for quarry at the assessment location.

### 4.3 Location N3

Noise monitoring at location N3 was conducted on Tuesday 4 March 2025 and Wednesday 5 March 2025 with results presented in **Table 4-3**. Noise from the quarry was audible at N3 during the day, evening and night monitoring period. The ambient noise environment was dominated by birds, wind, trees, cicadas, insects and background traffic. The results are deemed to satisfy the established noise criteria and indicate that noise emissions from Lynwood Quarry did not contribute to noise nuisance at the time of the monitoring (see Footnotes 2 to 4 below).

**Table 4-3: Noise survey results and observations for Location N3**

Date	Time	Descriptor (dBA)			Meteorology (handheld at microphone height)	Onsite Met Station (10m height)	Apparent Noise Source, Description and SPL (dBA)	Lynwood Quarry LAeq (15min) Contribution (dBA)	LAeq (15min) Criteria (dBA)	Lynwood Quarry LA1(1min) Contribution (dBA)	LA1 (1min) Criteria (dBA)
		LA1	LAeq	LA90							
5-03-25	12:10pm to 12:25pm (Day)	47.1	41.2	38.2	WD: 160° WS: 2.3 m/s Rain: Nil	WD: 103° WS: 0.6 m/s Rain: Nil Stability Category: D <sup>1</sup>	Holcim industrial hum, wind, birds, trees, cicadas 37-50 Quarry audible	<35 - 37 <sup>2</sup>	35	n/a	n/a
4-03-25	6:06pm to 6:21pm (Evening)	33.8	38.1	35.8	WD: 92° WS: 1.6 m/s Rain: Nil	WD: 88° WS: 0.4 m/s Rain: Nil Stability Category: D <sup>1</sup>	Background traffic, trees, wind, cicadas, Holcim industrial hum 34-43 Quarry audible	<34 - 36 <sup>3</sup>	35	n/a	n/a
5-03-25	5:09am to 5:24am (Night)	34.6	39.9	36.7	WD: n/a WS: 0 m/s Rain: Nil	WD: 137° WS: 0.8 m/s Rain: Nil Stability Category: D <sup>1</sup>	Background traffic, Holcim industrial hum, insects 34-47 Quarry audible	<34 - 36 <sup>4</sup>	36	<35	47

<sup>1</sup> Temperature data sourced from CSIRO CCAM and modelled using TAPM to determine Stability Category.

<sup>2</sup> Measured LAeq value of 41.2 was dominated by fauna so unable to separate extraneous noise from Holcim noise but estimated to be 35 - 37 dBA at the assessment location.

<sup>3</sup> Measured LAeq value of 38.1 was dominated by background traffic, flora and fauna, so unable to separate extraneous noise from Holcim noise but estimated to be 34 - 36 dBA at the assessment location.

<sup>4</sup> Measured LAeq value of 39.9 was dominated by background traffic and fauna, so unable to separate extraneous noise from Holcim noise but estimated to be 34 - 36 dBA at the assessment location.

#### 4.4 Location N4

Noise monitoring at location N4 was conducted on Tuesday 4 March 2025 and Wednesday 5 March 2025 with results presented in **Table 4-4**. Noise from the quarry was inaudible during the day, evening night monitoring periods. The ambient noise environment was dominated by insects, birds, wind, trees, sheep, motorway traffic and a passing car. The results satisfy the established noise criteria and indicate that noise emissions from Lynwood Quarry did not contribute to noise nuisance at the time of the monitoring.

**Table 4-4: Noise survey results and observations for Location N4**

Date	Time	Descriptor (dBA)			Meteorology (Handheld at microphone height)	Onsite Met Station (10m height)	Apparent Noise Source, Description and SPL (dBA)	Lynwood Quarry LAeq (15min) Contribution (dBA)	LAeq (15min) Criteria (dBA)	Lynwood Quarry LA1(1min) Contribution (dBA)	LA1 (1min) Criteria (dBA)
		LA1	LAeq	LA90							
5-03-25	9:44am to 9:59am (Day)	50.7	41.4	37.4	WD: n/a WS: 0 m/s Rain: Nil	WD: 98° WS: 0.9 m/s Rain: Nil Stability Category: D <sup>1</sup>	Background traffic, birds 36-45 Flock of birds 45-63 Sheep 40-45 Quarry inaudible	<27	37	n/a	n/a
4-03-25	7:07pm to 7:22pm (Evening)	48.1	42.5	37.5	WD: n/a WS: 0 m/s Rain: Nil	WD: 107° WS: 0.5 m/s Rain: Nil Stability Category: D <sup>1</sup>	Background traffic, wind, trees 35-42 Birds 40-42 Train 50-57 Quarry inaudible	<28	37	n/a	n/a
5-03-25	5:59am to 6:14am (Night)	48.2	40.9	38.4	WD: n/a WS: 0 m/s Rain: Nil	WD: 109° WS: 0.8 m/s Rain: Nil Stability Category: D <sup>1</sup>	Background traffic 38-41 Passing car 50-55 Magpies 40-46 Quarry inaudible	<28	36	n/a <sup>2</sup>	47

<sup>1</sup> Temperature data sourced from CSIRO CCAM and modelled using TAPM to determine Stability Category.

<sup>2</sup> Measured LA1 value of 48.2 was dominated by fauna and a car, so unable to estimate contribution for quarry at the assessment location.

## 5. Conclusion

This NMA was completed by Ramboll at the Holcim Lynwood Quarry, Marulan, NSW as a quarterly requirement of the NMP. Monitoring was carried out on Tuesday, 4 March 2025 and Wednesday, 5 March 2025 at four locations selected as representative to the sensitive receptors at the surroundings to Lynwood Quarry.

No audible noise from quarry operations was observed at locations N2 and N4 during the day, evening and night periods. Quarry noise was audible at locations N1 and N3 during all periods, where the quarry was audible as an industrial hum, except for N1 during the day, when it was inaudible.

The results presented in this NMA show compliance with the relevant noise criteria at the Holcim Lynwood Quarry, Marulan, NSW.

It is noted that at two assessment locations, some exceedances of the noise criteria have been recorded as follows:

- Up to 2 dB at N1 during the evening period and at N3 during the day period
- Up to 1 dB at N3 during the evening period

The above exceedances are deemed negligible (<2 dB) when considered against Table 4.1 of the NPfI. It should also be noted that the noise environment during these periods, noise monitoring was heavily affected by extraneous noise sources. Therefore, it can be concluded that the exceedance was not caused by the site operation.

## 6. References

Holcim Australia (2019) *Lynwood Quarry, Noise Management Plan*.

International Electrotechnical Commission *IEC 60942:2017 Electroacoustics – Sound calibrators*

Minister for Planning and Infrastructure (2005) 'Development Consent DA 128-5-2005, Lynwood Hard Rock Quarry, and associated infrastructure'.

NSW EPA (2021) Environment Protection Licence number 12939

NSW EPA (2013) *Noise Guide for Local Government*. Sydney NSW: NSW Environment Protection Authority. Available at: <https://www.epa.nsw.gov.au/-/media/epa/corporate-site/resources/noise/20130127nlg.pdf> (Accessed: 25 October 2022).

NSW EPA (2014) Discussion Paper. Validation of Inversion Strength Estimation Method.

NSW EPA (2017) *Noise Policy for Industry (NPfI)*. Sydney NSW: NSW Environment Protection Authority. Available at: <https://www.epa.nsw.gov.au/-/media/epa/corporate-site/resources/noise/17p0524-noise-policy-for-industry.pdf> (Accessed: 25 October 2022).

Standards Australia (2018) *AS 1055:2018 Acoustics—Description and measurement of environmental noise*. Australian Standard. Available at: [https://infostore.saiglobal.com/preview/825367946534.pdf?sku=1131503\\_SAIG\\_AS\\_AS\\_2626154](https://infostore.saiglobal.com/preview/825367946534.pdf?sku=1131503_SAIG_AS_AS_2626154) (Accessed: 19 January 2023).

Standards Australia and Standards New Zealand (2019) *AS/NZS IEC 61672.1:2019 Electroacoustics—Sound level meters, Part 1: Specifications*. Australian/New Zealand Standard. Available at: [https://infostore.saiglobal.com/preview/825343328243.pdf?sku=1142059\\_SAIG\\_AS\\_AS\\_2705644](https://infostore.saiglobal.com/preview/825343328243.pdf?sku=1142059_SAIG_AS_AS_2705644) (Accessed: 28 September 2022).

Intended for  
**Holcim (Australia) Pty Ltd**

Document type  
**Report**

Date  
**August 2025**

# Lynwood Quarry Quarterly Noise Monitoring Assessment

Quarter 2 2025

# Lynwood Quarry Quarterly Noise Monitoring Assessment

## Quarter 2 2025

Project name **NSW Environmental Monitoring 2024-2025**  
Project no. **318001800**  
Recipient **Wayne Beattie**  
Document type **Report**  
Version **2**  
Date **19/08/2025**  
Prepared by **Jake Bourke, Brodie Wood**  
Checked by **Arnold Cho**  
Approved by **Gavan Butterfield**  
Description **Data collected on 4 and 6 June 2025 for the quarterly period ending June 2025 at Marulan, NSW, as part of the noise monitoring program**

Ramboll  
The Arc, 45a Watt St  
Newcastle, NSW 2300  
Australia

T +61 2 4962 5444  
<https://www.ramboll.com/>

## Contents

<b>Abbreviations and Definitions</b>	<b>2</b>
<b>1. Overview</b>	<b>4</b>
1.1 Project Driver	4
1.2 Site Location and Sensitive Receptors	4
<b>2. Noise Criteria</b>	<b>6</b>
<b>3. Methodology</b>	<b>7</b>
3.1 Meteorological Conditions	7
<b>4. Results and Discussion</b>	<b>8</b>
4.1 Location N1	8
4.2 Location N2	9
4.3 Location N3	10
4.4 Location N4	11
<b>5. Conclusion</b>	<b>12</b>
<b>6. References</b>	<b>13</b>

## Table of Tables

Table 2-1: Monitoring locations and noise criteria	6
Table 3-1: Classification of Atmospheric Stability (NSW EPA, 2014)	7
Table 4-1: Noise survey results and observations for Location N1	8
Table 4-2: Noise survey results and observations for Location N2	9
Table 4-3: Noise survey results and observations for Location N3	10
Table 4-4: Noise survey results and observations for Location N4	11

## Table of figures

Figure 1: Noise monitoring locations	5
--------------------------------------	---

## Abbreviations and Definitions

	Description
$\Delta T$	Vertical Temperature Difference, i.e. the measured difference in ambient temperature between two elevations on the same tower. It is defined as the upper-level temperature measurement minus the lower-level temperature measurement.
°	Degree
Ambient Noise	The all-encompassing noise within a given environment. It is the composite of sounds from many sources, both near and far.
Background noise	The underlying level of noise present in the ambient noise, excluding the noise source under investigation, when extraneous noise is removed. This is described using the LA90 descriptor (see below).
C	Celcius
CCAM	Conformal Cubic Atmospheric Model
CSIRO	Commonwealth Scientific and Industrial Research Organisation
dB	Abbreviation for decibel, a measure of sound equivalent to 20 times the logarithm (to base 10) of the ratio of a given sound pressure to a reference pressure, and 10 times the logarithm of a given sound power to a reference power.
dB(A)	A measure of A-weighted sound levels. A Weighting is an adjustment made to the sound level measurement to approximate the response of the human ear.
EPA	Environment Protection Authority
EPL	Environment Protection Licence
Extraneous noise	Noise resulting from activities that are not typical of the area. Atypical activities may include construction, and traffic generated by holiday periods. Normal daily traffic is not extraneous noise.
m	Metre
LA1	The noise level, measured in dB(A), which is exceeded for 1 per cent of the measurement period.
LA1(1min)	The noise level, measured in dB(A), which is exceeded for 1 per cent of the time over a 1-minute measurement period, i.e., is exceeded for 0.6 seconds. This measure can approximate to the maximum noise level but may be less if there is more than 1 noise event during this 0.6 second period.
LA10	The noise level, measured in dB(A), which is exceeded for 10 per cent of the time.
LA90	The noise level, measured in dB(A), which is exceeded for 90 per cent of the time, referred to as the background noise level. This is considered to represent the background noise (see above).
LAeq	The level of noise equivalent to the energy average of noise levels occurring over a defined measurement period.
LAeq (period)	The average equivalent noise level, measured in dB(A), during a measurement period (e.g., 15-minute, day, evening, or night).
LAm <sub>ax</sub>	The A-weighted sound pressure level that represents the maximum noise level measured over the time that a given sound is measured.
NATA	National Association of Testing Authorities
NMA	Noise Monitoring Assessment
NMP	Noise Management Plan
NPFI	Noise Policy for Industry 2017

<b>Description</b>	
NSW	New South Wales
s	Second
SPL	The Sound Pressure Level. Sound pressure is the fluctuation in air pressure, from the steady atmospheric pressure, created by sound. The sound pressure level is the sound pressure expressed on a decibel scale.
TAPM	The Air Pollution Model

Source: Noise Guide for Local Government (NSW EPA, 2023).

## 1. Overview

### 1.1 Project Driver

Ramboll Australia Pty Ltd (Ramboll) has been commissioned by Holcim (Australia) Pty Ltd (Holcim) to complete a Noise Monitoring Assessment (NMA) for Lynwood Quarry ("the quarry") at Marulan, NSW.

This NMA was done in accordance with the following documents:

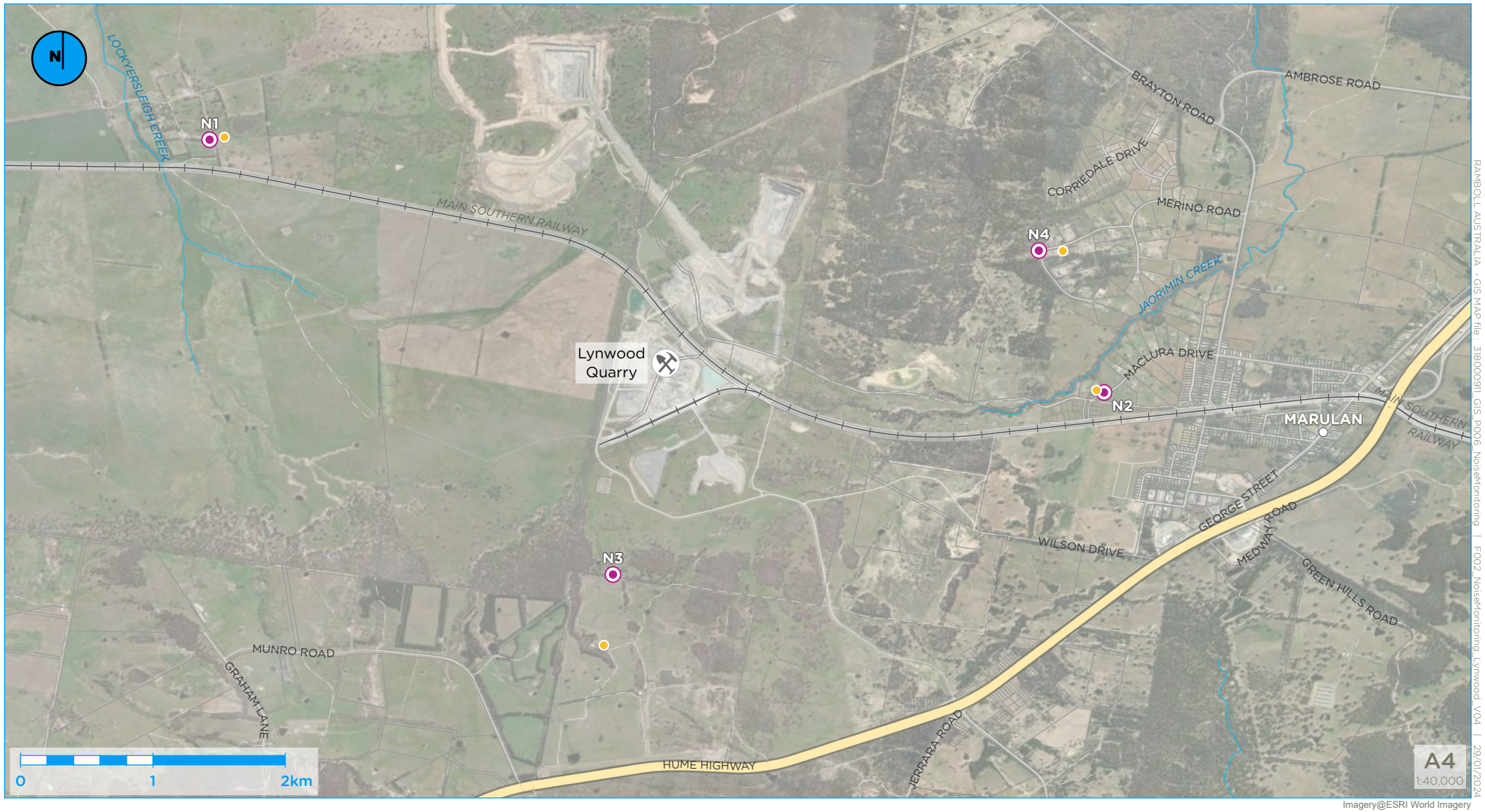
- Noise Policy for Industry (NPfI) (NSW EPA, 2017)
- Lynwood Quarry Noise Management Plan (NMP) (Holcim Australia, 2019)
- Environment Protection Licence (EPL) number 12939 (NSW EPA, 2021)
- Development Consent DA 128-5-2005 (Minister for Planning, 2017)
- Australian Standard AS 1055:2018 Acoustics – Description and measurement of environmental noise (Standards Australia, 2018)
- Australian Standard AS/NZS IEC 61672.1:2019 Electroacoustics – Sound level meters, Part 1: Specifications (Standards Australia and Standards New Zealand, 2019)
- IEC 60942:2017 Electroacoustics - Electroacoustics – Sound calibrators (International Electrotechnical Commission, 2017).

This NMA has been undertaken for the quarterly period April to June 2025, and forms part of the monitoring program to determine compliance with conditions of the Development Consent.

### 1.2 Site Location and Sensitive Receptors

The quarry is located at 278 Stoney Creek Road, approximately 4 km to the west of the Marulan railway station and town centre. Sensitive receptors surrounding the quarry are primarily rural and residential (to the west of the site). The Hume Highway is located to the east and south of the quarry. Highway traffic (Hume Highway) is a dominant noise source.

The monitoring locations with respect to the quarry and assessed receivers are presented in the locality plan in **Figure 1**.



**Legend**

- Noise monitoring location
- Residence/noise assessment location



**Figure 1: Noise monitoring locations at Lynwood Quarry**

## 2. Noise Criteria

**Table 2-1** includes the applicable noise criteria outlined in the Development Consent and the EPL for the 16 residential receivers surrounding the quarry (L1–L16), and the four monitoring locations adopted from the NMP that are deemed representative and applicable for this NMA (N1–N4). It should be noted that the original location of N3 (on the northern boundary of 16038 Hume Highway, Marulan) continues to be inaccessible and as such N3 has been relocated to a nearby residential receiver approximately 900 m to the west on Munro Road, Marulan (**Figure 1**) where all future monitoring will take place. This revised location is deemed representative and applicable for this NMA.

**Table 2-1: Monitoring locations and noise criteria**

EPL ID	Receiver Description	Monitoring Locations		Day <sup>1</sup>	Evening <sup>2</sup>	Night <sup>3</sup>	Night <sup>3</sup>
		NMP ID	Address	LAeq (15min)	LAeq (15min)	LAeq (15min)	LA1 (1min)
dBA							
L1	West of the Granite Pit.	N1	1114 Carrick Road, Marulan	35	35	35	45
L2	Northeast of the site	-	-	35	35	35	45
L3	Northeast of the site	-	-	35	35	35	45
L4	East of the site in Marulan	-	-	35	37	35	46
L5	East of the site in Marulan	-	-	35	35	35	46
L6	East of the site in Marulan	N2	End of Maclura Drive, Marulan	35	37	36	46
L7	East of the site in Marulan	-	-	38	38	35	55
L8	East of the site in Marulan	-	-	39	38	36	55
L9	East of the site in Marulan	-	-	39	39	37	56
L10	Southeast of the site in Old Marulan	-	-	42	42	40	53
L11	South of the site	N3	Off Marulan South Road, near DD8	35	35	36	47
L12	East of the site in Marulan	N4	Corner of Dorsett and Suffolk Road, Marulan	37	37	36	47
L13	East of the site in Marulan	-	-	40	38	37	47
L14	South of the site	-	-	35	35	35	47
L15	South of the site	-	-	35	35	35	47
L16	Northeast of the site	-	-	35	35	35	45

<sup>1</sup> 7 am–6 pm Monday to Saturday and 8 am–6 pm Sunday and public holidays

<sup>2</sup> 6 pm–10 pm Monday to Sunday

<sup>3</sup> 10 pm–7 am Monday to Saturday and 10 pm–8 am Sunday and public holidays

### 3. Methodology

The monitoring program was developed in accordance with the procedures described in Australian Standard AS 1055:2018 and the Approval Documents referenced in Section 0. The measurements were carried out using a RION Sound Level Meter NL-52 on Wednesday 4 June 2025 and Friday 6 June 2025. The acoustic instrumentation used carries current National Association of Testing Authorities (NATA) calibration and complies with AS/NZS IEC 61672-1:2019 class 1. Calibration of all instrumentation was checked prior to and following measurements using a Pulsar Acoustic Calibrator 105 which carried a current NATA calibration and complies with IEC 60942:2017. Drift in calibration did not exceed  $\pm 0.3$  dBA.

Attended noise monitoring was conducted for 15-minutes in duration during the day, evening, and night periods over two days at each monitoring location. Where possible, throughout each measurement the operator quantified the contribution of each significant noise source. Where the quarry was not distinctly audible during the attended monitoring, the quarry contribution is estimated to be at least 10 dBA below the ambient noise level, as determined by the LA90.

#### 3.1 Meteorological Conditions

Meteorology has an important influence on noise monitoring assessment. An onsite meteorological station with data recorded at 10m height has been used to adopt wind direction, wind speed and rain data to inform this assessment. Temperature data has been adopted from the Commonwealth Scientific and Industrial Research Organisation (CSIRO) Conformal Cubic Atmospheric Model (CCAM) and modelled using The Air Pollution Model (TAPM) to determine the atmospheric category as outline in **Table 3-1**.

**Table 3-1: Classification of Atmospheric Stability (NSW EPA, 2014)**

Stability Classification	Pasquill Stability Category	Ambient temperature change with height ( $^{\circ}\text{C}/100\text{m}$ )
Extremely unstable	A	$\Delta T \leq -1.9$
Moderately unstable	B	$-1.9 < \Delta T \leq -1.7$
Slightly unstable	C	$-1.7 < \Delta T \leq -1.5$
Neutral	D	$-1.5 < \Delta T \leq -0.5$
Slightly stable	E	$-0.5 < \Delta T \leq 1.5$
Moderately stable	F	$1.5 < \Delta T \leq 4.0$
Extremely stable	G	$\Delta T > 4.0$

As stated in the Development Consent, the noise criteria in **Table 2-1** applies under all meteorological conditions except the following:

- Monitoring locations for the collection of representative noise data
- Wind speeds greater than 3 m/s at 10 metres above ground level
- Stability category F temperature inversion conditions and wind speeds greater than 2 m/s at 10 metres above ground level
- Stability category G temperature inversion conditions.

Appendix 10 of the Development Consent also specifies that except for wind speed at microphone height, the data to be used for determining meteorological conditions must be that recorded by a suitable meteorological station operating in the vicinity of the site that complies with the requirements in the Approved Methods for Sampling of Air Pollutants in New South Wales guideline.

## 4. Results and Discussion

### 4.1 Location N1

Noise monitoring at location N1 was conducted on Wednesday 4 June 2025 and Friday 6 June 2025 with results presented in **Table 4-1**. Noise from the quarry was inaudible at N1 during the day, evening and night monitoring period. The ambient noise environment was dominated by wind, trees, insects, frogs and birds. The results are deemed to satisfy the established noise criteria and indicate that noise emissions from Lynwood Quarry did not contribute to noise nuisance at the time of the monitoring.

**Table 4-1: Noise survey results and observations for Location N1**

Date	Time	Descriptor (dBA)			Meteorology (Handheld at microphone height)	Onsite Met Station (10m height)	Apparent Noise Source, Description and SPL (dBA)	Lynwood Quarry LAeq(15min) Contribution (dBA)	LAeq(15min) Criteria (dBA)	Lynwood Quarry LA1(1min) Contribution (dBA)	LA1(1min) Criteria (dBA)
		LA1	LAeq	LA90							
04-06-25	11:53am to 12:08pm (Day)	56.5	49.3	40.9	WD: 189° WS: 2.8 m/s Rain: Nil	WD: 175° WS: 4.1 m/s Rain: Nil Stability Category: E <sup>1</sup>	Wind/trees/insects 48-53 Gust of wind 55-57 Quarry inaudible	<31	35	n/a	n/a
04-06-25	8:58pm to 9:13pm (Evening)	39.3	36.2	34.8	WD: n/a WS: 0 m/s Rain: Nil	WD: 61° WS: 0.1 m/s Rain: Nil Stability Category: E <sup>1</sup>	Background traffic/insects/frogs/birds 36-40 Quarry inaudible	<25	35	n/a	n/a
06-06-25	6:12am to 6:27am (Night)	23.9	31.1	26.5	WD: n/a WS: 0 m/s Rain: Nil	WD: 116° WS: 0.8 m/s Rain: Nil Stability Category: G <sup>1</sup>	Insects/birds 29-32 Dog barking 34-40 Quarry inaudible	<17	35 <sup>2</sup>	n/a	45

<sup>1</sup> Temperature data sourced from CSIRO CCAM and modelled using TAPM to determine Stability Category.

<sup>2</sup> Criteria does not apply under the meteorological conditions encountered during this monitoring period (stability category G temperature inversion conditions) as outlined in Section 3.1.

#### 4.2 Location N2

Noise monitoring at location N2 was conducted on Wednesday 4 June 2025 and Friday 6 June 2025 with results presented in **Table 4-2**. Noise from the quarry was inaudible at N2 during the day, evening, and night monitoring periods. The ambient noise environment was dominated by wind, trees, birds, construction noise, background traffic and trains. The results satisfy the established noise criteria and indicate that noise emissions from Lynwood Quarry did not contribute to noise nuisance at the time of the monitoring.

**Table 4-2: Noise survey results and observations for Location N2**

Date	Time	Descriptor (dBA)			Meteorology (handheld at microphone height)	Onsite Met Station (10m height)	Apparent Noise Source, Description and SPL (dBA)	Lynwood Quarry LAeq (15min) Contribution (dBA)	LAeq (15min) Criteria (dBA)	Lynwood Quarry LA1(1min) Contribution (dBA)	LA1 (1min) Criteria (dBA)
		LA1	LAeq	LA90							
04-06-25	1:37pm to 1:52pm (Day)	54.4	47.9	41.5	WD: 184° WS: 2.7 m/s Rain: Nil	WD: 176° WS: 3.8 m/s Rain: Nil Stability Category: E <sup>1</sup>	Wind/trees/birds/backyard construction noise 47-53 Loud bangs 54-59 Quarry inaudible	<32	35	n/a	n/a
04-06-25	7:57pm to 8:12pm (Evening)	56.2	46.6	43.3	WD: n/a WS: 0 m/s Rain: Nil	WD: 186° WS: 1.3 m/s Rain: Nil Stability Category: E <sup>1</sup>	Background traffic/trees 44-46 Birds 48-51 Train 51-60 Quarry inaudible	<33	37	n/a	n/a
06-06-25	5:16am to 5:31am (Night)	63.3	48.3	40.2	WD: n/a WS: 0 m/s Rain: Nil	WD: 10° WS: 0.2 m/s Rain: Nil Stability Category: G <sup>1</sup>	Background traffic, insects 40-48 Train 50-65 Quarry inaudible	<30	36 <sup>3</sup>	n/a <sup>2</sup>	46

<sup>1</sup> Temperature data sourced from CSIRO CCAM and modelled using TAPM to determine Stability Category.

<sup>2</sup> Measured LA1 value of 63.3 was dominated by traffic, fauna and a train, so unable to estimate contribution for quarry at the assessment location.

<sup>3</sup> Criteria does not apply under the meteorological conditions encountered during this monitoring period (stability category G temperature inversion conditions) as outlined in Section 3.1.

### 4.3 Location N3

Noise monitoring at location N3 was conducted on Wednesday 4 June 2025 with results presented in **Table 4-3**. Noise from the quarry was inaudible at N3 during the day, evening and night monitoring period. The ambient noise environment was dominated by wind, trees, frogs, birds and background traffic. The results satisfy the established noise criteria and indicate that noise emissions from Lynwood Quarry did not contribute to noise nuisance at the time of the monitoring.

**Table 4-3: Noise survey results and observations for Location N3**

Date	Time	Descriptor (dBA)			Meteorology (handheld at microphone height)	Onsite Met Station (10m height)	Apparent Noise Source, Description and SPL (dBA)	Lynwood Quarry LAeq (15min) Contribution (dBA)	LAeq (15min) Criteria (dBA)	Lynwood Quarry LA1 (1min) Contribution (dBA)	LA1 (1min) Criteria (dBA)
		LA1	LAeq	LA90							
04-06-25	2:14pm to 2:29pm (Day)	47.6	43	40	WD: 185° WS: 2.7 m/s Rain: Nil	WD: 188° WS: 3.3 m/s Rain: Nil Stability Category: E <sup>1</sup>	Wind/trees/insects/birds/background traffic 39-44 Quarry inaudible	<30	35	n/a	n/a
04-06-25	7:18pm to 7:33pm (Evening)	48.3	44.1	41.5	WD: n/a WS: 0 m/s Rain: Nil	WD: 193° WS: 2.3 m/s Rain: Nil Stability Category: E <sup>1</sup>	Background traffic/trees/insects/frogs 41-47 Quarry inaudible	<32	35	n/a	n/a
04-06-25	10:00pm to 10:15pm (Night)	50.1	45.7	42.9	WD: 229° WS: 1.3 m/s Rain: Nil	WD: 300° WS: 0.4 m/s Rain: Nil Stability Category: G <sup>1</sup>	Background traffic/insects/frogs/wind/trees 47-49 Quarry inaudible	<33	36 <sup>2</sup>	<35	47

<sup>1</sup> Temperature data sourced from CSIRO CCAM and modelled using TAPM to determine Stability Category.

<sup>2</sup> Criteria does not apply under the meteorological conditions encountered during this monitoring period (stability category G temperature inversion conditions) as outlined in Section 3.1.

#### 4.4 Location N4

Noise monitoring at location N4 was conducted on Wednesday 4 June 2025 and Friday 6 June with results presented in **Table 4-4**. Noise from the quarry was inaudible during the day monitoring periods. Noise from the quarry was audible at N4 during the evening and night monitoring period. The ambient noise environment was dominated by wind, trees, birds, passing cars and aircrafts. The results satisfy the established noise criteria and indicate that noise emissions from Lynwood Quarry did not contribute to noise nuisance at the time of the monitoring, except for the evening period.

**Table 4-4: Noise survey results and observations for Location N4**

Date	Time	Descriptor (dBA)			Meteorology (Handheld at microphone height)	Onsite Met Station (10m height)	Apparent Noise Source, Description and SPL (dBA)	Lynwood Quarry LAeq (15min) Contribution (dBA)	LAeq (15min) Criteria (dBA)	Lynwood Quarry LA1(1min) Contribution (dBA)	LA1 (1min) Criteria (dBA)
		LA1	LAeq	LA90							
04-06-25	12:49pm to 1:04pm (Day)	46.9	41.3	38.2	WD: 185° WS: 2.4 m/s Rain: Nil	WD: 176° WS: 4.1 m/s Rain: Nil Stability Category: E <sup>1</sup>	Wind/trees/birds 38-44 Passing cars 49 Quarry inaudible	<28	37	n/a	n/a
04-06-25	8:21pm to 8:36pm (Evening)	47.3	43.5	41.6	WD: 230° WS: 1.5 m/s Rain: Nil	WD: 186° WS: 1.3 m/s Rain: Nil Stability Category: E <sup>1</sup>	Wind/trees/operation hum 42-44 Quarry audible	<42 <sup>2</sup>	37	n/a	n/a
06-06-25	5:38am to 5:53am (Night)	52.9	43	36.6	WD: n/a WS: 0 m/s Rain: Nil	WD: 43° WS: 0.3 m/s Rain: Nil Stability Category: G <sup>1</sup>	Wind/trees/truck movements 34-36 Aircraft 45-50 Quarry audible	<43	36 <sup>3</sup>	n/a <sup>4</sup>	47

<sup>1</sup> Temperature data sourced from CSIRO CCAM and modelled using TAPM to determine Stability Category.

<sup>2</sup> Moderate exceedance (NPF1 2017 – Table 4.1). Measurement influenced by extraneous noise sources (wind/trees), so the quarry contribution estimated from LA90 measurement result.

<sup>3</sup> Criteria does not apply under the meteorological conditions encountered during this monitoring period (stability category G temperature inversion conditions) as outlined in **Section 3.1**.

## 5. Conclusion

This NMA was completed by Ramboll at the Holcim Lynwood Quarry, Marulan, NSW as a quarterly requirement of the NMP. Monitoring was carried out on Wednesday 4 June 2025 and Friday 6 June 2025 at four locations selected as representative to the sensitive receptors at the surroundings to Lynwood Quarry.

No audible noise from quarry operations was observed at locations N1, N2 and N3 during the day, evening and night periods. Quarry noise was audible at location N4 during the evening and night monitoring periods where the quarry was audible with truck movements and operational hum. No audible noise from quarry operations was observed at N4 during the day.

The results presented in this NMA show compliance with the relevant noise criteria at the Holcim Lynwood Quarry, Marulan, NSW, except at one assessment location, where the following exceedance of the noise criteria has been recorded:

- Up to 5 dB at N4 during the evening period.

The above exceedance is deemed moderate ( $\leq 5$  dB) when considered against Table 4.1 of the NPfI. It should also be noted that the noise environment during these periods, noise monitoring was influenced by extraneous noise sources.

## 6. References

Holcim Australia (2019) *Lynwood Quarry, Noise Management Plan*.

International Electrotechnical Commission *IEC 60942:2017 Electroacoustics – Sound calibrators*

Minister for Planning and Infrastructure (2005) 'Development Consent DA 128-5-2005, Lynwood Hard Rock Quarry, and associated infrastructure'.

NSW EPA (2021) Environment Protection Licence number 12939

NSW EPA (2013) *Noise Guide for Local Government*. Sydney NSW: NSW Environment Protection Authority. Available at: <https://www.epa.nsw.gov.au/-/media/epa/corporate-site/resources/noise/20130127nlg.pdf> (Accessed: 25 October 2022).

NSW EPA (2014) Discussion Paper. Validation of Inversion Strength Estimation Method.

NSW EPA (2017) *Noise Policy for Industry (NPfI)*. Sydney NSW: NSW Environment Protection Authority. Available at: <https://www.epa.nsw.gov.au/-/media/epa/corporate-site/resources/noise/17p0524-noise-policy-for-industry.pdf> (Accessed: 25 October 2022).

Standards Australia (2018) *AS 1055:2018 Acoustics—Description and measurement of environmental noise*. Australian Standard. Available at: [https://infostore.saiglobal.com/preview/825367946534.pdf?sku=1131503\\_SAIG\\_AS\\_AS\\_2626154](https://infostore.saiglobal.com/preview/825367946534.pdf?sku=1131503_SAIG_AS_AS_2626154) (Accessed: 19 January 2023).

Standards Australia and Standards New Zealand (2019) *AS/NZS IEC 61672.1:2019 Electroacoustics—Sound level meters, Part 1: Specifications*. Australian/New Zealand Standard. Available at: [https://infostore.saiglobal.com/preview/825343328243.pdf?sku=1142059\\_SAIG\\_AS\\_AS\\_2705644](https://infostore.saiglobal.com/preview/825343328243.pdf?sku=1142059_SAIG_AS_AS_2705644) (Accessed: 28 September 2022).

Intended for  
**Holcim (Australia) Pty Ltd**

Document type  
**Report**

Date  
**October 2025**

# Lynwood Quarry Quarterly Noise Monitoring Assessment

Quarter 3 2025

# Lynwood Quarry Quarterly Noise Monitoring Assessment

## Quarter 3 2025

Project name **NSW Environmental Monitoring 2024-2025**  
Project no. **318001800**  
Recipient **Wayne Beattie, Celin Joshy**  
Document type **Report**  
Version **1**  
Date **24/10/2025**  
Prepared by **Brodie Wood**  
Checked by **Arnold Cho, Jake Bourke**  
Approved by **Gavan Butterfield**  
Description **Data collected on 1 September 2025 for the quarterly period ending  
September 2025 at Marulan, NSW, as part of the noise monitoring program**

Ramboll  
The Arc, 45a Watt St  
Newcastle, NSW 2300  
Australia

T +61 2 4962 5444  
<https://www.ramboll.com/>

## Contents

Abbreviations and Definitions	2
1. Overview	3
1.1 Project Driver	3
1.2 Site Location and Sensitive Receptors	3
2. Noise Criteria	5
3. Methodology	6
3.1 Meteorological Conditions	6
4. Results and Discussion	7
4.1 Location N1	7
4.2 Location N2	8
4.3 Location N3	9
4.4 Location N4	10
5. Conclusion	11
6. References	12

## Table of Tables

Table 2-1: Monitoring locations and noise criteria	5
Table 3-1: Classification of atmospheric stability (NSW EPA, 2014)	6
Table 4-1: Noise survey results and observations for location N1	7
Table 4-2: Noise survey results and observations for location N2	8
Table 4-3: Noise survey results and observations for location N3	9
Table 4-4: Noise survey results and observations for location N4	10

## Table of figures

Figure 1: Noise monitoring locations	4
--------------------------------------	---

## Abbreviations and Definitions

	Description
$\Delta T$	Vertical Temperature Difference, i.e. the measured difference in ambient temperature between two elevations on the same tower. It is defined as the upper-level temperature measurement minus the lower-level temperature measurement.
°	Degree
Ambient Noise	The all-encompassing noise within a given environment. It is the composite of sounds from many sources, both near and far.
Background noise	The underlying level of noise present in the ambient noise, excluding the noise source under investigation, when extraneous noise is removed. This is described using the LA90 descriptor (see below).
C	Celsius
CCAM	Conformal Cubic Atmospheric Model
CSIRO	Commonwealth Scientific and Industrial Research Organisation
dB	Abbreviation for decibel, a measure of sound equivalent to 20 times the logarithm (to base 10) of the ratio of a given sound pressure to a reference pressure, and 10 times the logarithm of a given sound power to a reference power.
dB(A)	A measure of A-weighted sound levels. A Weighting is an adjustment made to the sound level measurement to approximate the response of the human ear.
EPA	Environment Protection Authority
EPL	Environment Protection Licence
Extraneous noise	Noise resulting from activities that are not typical of the area. Atypical activities may include construction, and traffic generated by holiday periods. Normal daily traffic is not extraneous noise.
m	Metre
LA1	The noise level, measured in dB(A), which is exceeded for 1 per cent of the measurement period.
LA1(1min)	The noise level, measured in dB(A), which is exceeded for 1 per cent of the time over a 1-minute measurement period, i.e., is exceeded for 0.6 seconds. This measure can approximate to the maximum noise level but may be less if there is more than 1 noise event during this 0.6 second period.
LA10	The noise level, measured in dB(A), which is exceeded for 10 per cent of the time.
LA90	The noise level, measured in dB(A), which is exceeded for 90 per cent of the time, referred to as the background noise level. This is considered to represent the background noise (see above).
LAeq	The level of noise equivalent to the energy average of noise levels occurring over a defined measurement period.
LAeq (period)	The average equivalent noise level, measured in dB(A), during a measurement period (e.g., 15-minute, day, evening, or night).
LAm <sub>ax</sub>	The A-weighted sound pressure level that represents the maximum noise level measured over the time that a given sound is measured.
NATA	National Association of Testing Authorities
NMA	Noise Monitoring Assessment
NMP	Noise Management Plan
NPI	Noise Policy for Industry 2017
NSW	New South Wales
s	Second
SPL	The Sound Pressure Level. Sound pressure is the fluctuation in air pressure, from the steady atmospheric pressure, created by sound. The sound pressure level is the sound pressure expressed on a decibel scale.
TAPM	The Air Pollution Model

Source: Noise Guide for Local Government (NSW EPA, 2023).

## 1. Overview

### 1.1 Project Driver

Ramboll Australia Pty Ltd (Ramboll) has been commissioned by Holcim (Australia) Pty Ltd (Holcim) to complete a Noise Monitoring Assessment (NMA) for Lynwood Quarry ("the quarry") at Marulan, NSW.

This NMA was done in accordance with the following documents:

- Noise Policy for Industry (NPFI) (NSW EPA, 2017)
- Lynwood Quarry Noise Management Plan (NMP) (Holcim, 2019)
- Environment Protection Licence (EPL) number 12939 (NSW EPA, 2021)
- Development Consent DA 128-5-2005 (Minister for Planning, 2017)
- Australian Standard AS 1055:2018 Acoustics – Description and measurement of environmental noise (Standards Australia, 2018)
- Australian Standard AS/NZS IEC 61672.1:2019 Electroacoustics – Sound level meters, Part 1: Specifications (Standards Australia and Standards New Zealand, 2019)
- International Electrotechnical Commission (IEC) 60942:2017 Electroacoustics - Electroacoustics – Sound calibrators (IEC, 2017).

This NMA has been undertaken for the quarterly period April to June 2025, and forms part of the monitoring program to determine compliance with conditions of the Development Consent.

### 1.2 Site Location and Sensitive Receptors

The quarry is located at 278 Stoney Creek Road, approximately 4 km to the west of the Marulan railway station and town centre. Sensitive receptors surrounding the quarry are primarily rural and residential (to the west of the site). The Hume Highway is located to the east and south of the quarry. Highway traffic (Hume Highway) is a dominant noise source.

The monitoring locations with respect to the quarry and assessed receivers are presented in the locality plan in **Figure 1**.



- Legend**
- Noise monitoring location
  - Residence/noise assessment location



**Figure 1: Noise monitoring locations at Lynwood Quarry**

## 2. Noise Criteria

**Table 2-1** includes the applicable noise criteria outlined in the Development Consent and the EPL for the 16 residential receivers surrounding the quarry (L1–L16), and the four monitoring locations adopted from the NMP that are deemed representative and applicable for this NMA (N1–N4). It should be noted that the original location of N3 (on the northern boundary of 16038 Hume Highway, Marulan) continues to be inaccessible and as such N3 has been relocated to a nearby residential receiver approximately 900 m to the west on Munro Road, Marulan (**Figure 1**) where all future monitoring will take place. This revised location is deemed representative and applicable for this NMA.

**Table 2-1: Monitoring locations and noise criteria**

EPL ID	Receiver Description	Monitoring Locations		Day <sup>1</sup>	Evening <sup>2</sup>	Night <sup>3</sup>	Night <sup>3</sup>
		NMP ID	Address	LAeq (15min)	LAeq (15min)	LAeq (15min)	LA1 (1min)
dBA							
L1	West of the Granite Pit.	N1	1114 Carrick Road, Marulan	35	35	35	45
L2	Northeast of the site	-	-	35	35	35	45
L3	Northeast of the site	-	-	35	35	35	45
L4	East of the site in Marulan	-	-	35	37	35	46
L5	East of the site in Marulan	-	-	35	35	35	46
L6	East of the site in Marulan	N2	End of Maclura Drive, Marulan	35	37	36	46
L7	East of the site in Marulan	-	-	38	38	35	55
L8	East of the site in Marulan	-	-	39	38	36	55
L9	East of the site in Marulan	-	-	39	39	37	56
L10	Southeast of the site in Old Marulan	-	-	42	42	40	53
L11	South of the site	N3	Off Marulan South Road, near DD8	35	35	36	47
L12	East of the site in Marulan	N4	Corner of Dorsett and Suffolk Road, Marulan	37	37	36	47
L13	East of the site in Marulan	-	-	40	38	37	47
L14	South of the site	-	-	35	35	35	47
L15	South of the site	-	-	35	35	35	47
L16	Northeast of the site	-	-	35	35	35	45

<sup>1</sup> 7 am–6 pm Monday to Saturday and 8 am–6 pm Sunday and public holidays

<sup>2</sup> 6 pm–10 pm Monday to Sunday

<sup>3</sup> 10 pm–7 am Monday to Saturday and 10 pm–8 am Sunday and public holidays

### 3. Methodology

The monitoring program was developed in accordance with the procedures described in AS 1055:2018 (Standards Australia, 2018) and the Approval Documents referenced in Section 1. The measurements were carried out using a RION Sound Level Meter NL-52 on Monday 1 September 2025. The acoustic instrumentation used carries current National Association of Testing Authorities (NATA) calibration and complies with AS/NZS IEC 61672-1:2019 class 1. Calibration of all instrumentation was checked prior to and following measurements using a Pulsar Acoustic Calibrator 105 which carried a current NATA calibration and complies with IEC 60942:2017. Drift in calibration did not exceed ±0.3 dBA.

Attended noise monitoring was conducted for 15-minutes in duration during the day, evening, and night periods over two days at each monitoring location. Where possible, throughout each measurement the operator quantified the contribution of each significant noise source. Where the quarry was not distinctly audible during the attended monitoring, the quarry contribution is estimated to be at least 10 dBA below the ambient noise level, as determined by the LA90.

#### 3.1 Meteorological Conditions

Meteorology has an important influence on noise monitoring assessment. An onsite meteorological station with data recorded at 10m height has been used to adopt wind direction, wind speed and rain data to inform this assessment. Temperature data has been adopted from the Commonwealth Scientific and Industrial Research Organisation (CSIRO) Conformal Cubic Atmospheric Model (CCAM) and modelled using The Air Pollution Model (TAPM) to determine the atmospheric category as outline in **Table 3-1**.

**Table 3-1: Classification of atmospheric stability (NSW EPA, 2014)**

Stability Classification	Pasquill Stability Category	Ambient temperature change with height (°C/100m)
Extremely unstable	A	$\Delta T \leq -1.9$
Moderately unstable	B	$-1.9 < \Delta T \leq -1.7$
Slightly unstable	C	$-1.7 < \Delta T \leq -1.5$
Neutral	D	$-1.5 < \Delta T \leq -0.5$
Slightly stable	E	$-0.5 < \Delta T \leq 1.5$
Moderately stable	F	$1.5 < \Delta T \leq 4.0$
Extremely stable	G	$\Delta T > 4.0$

As stated in the Development Consent, the noise criteria in **Table 2-1** applies under all meteorological conditions except the following:

- Monitoring locations for the collection of representative noise data
- Wind speeds greater than 3 m/s at 10 metres above ground level
- Stability category F temperature inversion conditions and wind speeds greater than 2 m/s at 10 metres above ground level
- Stability category G temperature inversion conditions.

Appendix 10 of the Development Consent also specifies that except for wind speed at microphone height, the data to be used for determining meteorological conditions must be that recorded by a suitable meteorological station operating in the vicinity of the site that complies with the requirements in the Approved Methods for Sampling of Air Pollutants in New South Wales guideline.

## 4. Results and Discussion

### 4.1 Location N1

Noise monitoring at location N1 was conducted on Monday 1 September 2025 with results presented in **Table 4-1**. Noise from the quarry was inaudible at N1 during the day, evening and night monitoring period. The ambient noise environment was dominated by wind, fauna, traffic, trains, and aircraft. The results are deemed to satisfy the established noise criteria and indicate that noise emissions from Lynwood Quarry did not contribute to noise nuisance at the time of the monitoring.

**Table 4-1: Noise survey results and observations for location N1**

Date	Time	Descriptor (dBA)			Meteorology (Handheld at microphone height)	Onsite Met Station (10m height)	Apparent Noise Source, Description and SPL (dBA)	Lynwood Quarry LAeq(15min) Contribution (dBA)	LAeq(15min) Criteria (dBA)	Lynwood Quarry LA1(1min) Contribution (dBA)	LA1(1min) Criteria (dBA)
		LA1	LAeq	LA90							
01-09-25	2:33pm to 2:48pm (Day)	60.1	48	32	WD: 270° WS: 1.2 m/s Rain: Nil	WD: 258° WS: 1.6 m/s Rain: Nil Stability Category: F <sup>1</sup>	Wind, insects, frogs, birds 30-50 Train 54-60 Aircraft 50-55 Bird 65-70 Quarry inaudible	<22	35	n/a	n/a
01-09-25	9:27pm to 9:42pm (Evening)	35.5	40.3	38	WD: n/a WS: 0 m/s Rain: Nil	WD: 42.6° WS: 0.6 m/s Rain: Nil Stability Category: F <sup>1</sup>	Background traffic, insects, cicadas 37-43 Train 40-44 Cow 40-42 Quarry inaudible	<28	35	n/a	n/a
01-09-25	10:00pm to 10:15pm (Night)	44.6	42.1	40.4	WD: n/a WS: 0 m/s Rain: Nil	WD: 282° WS: 0.2 m/s Rain: Nil Stability Category: F <sup>1</sup>	Background traffic, insects, cicadas 38-46 Cow 44-45 Quarry inaudible	<30	35	n/a <sup>2</sup>	45

<sup>1</sup> Temperature data sourced from CSIRO CCAM and modelled using TAPM to determine Stability Category.

<sup>2</sup> Measured LA1 value of 44.6 dBA was dominated by traffic and fauna, so unable to estimate contribution for quarry at the assessment location.

## 4.2 Location N2

Noise monitoring at location N2 was conducted on Monday 1 September 2025 with results presented in **Table 4-2**. Noise from the quarry was inaudible at N2 during the day, evening, and night monitoring periods. The ambient noise environment was dominated by background traffic, wind, trees, fauna and trains. The results satisfy the established noise criteria and indicate that noise emissions from Lynwood Quarry did not contribute to noise nuisance at the time of the monitoring.

**Table 4-2: Noise survey results and observations for location N2**

Date	Time	Descriptor (dBA)			Meteorology (handheld at microphone height)	Onsite Met Station (10m height)	Apparent Noise Source, Description and SPL (dBA)	Lynwood Quarry LAeq (15min) Contribution (dBA)	LAeq (15min) Criteria (dBA)	Lynwood Quarry LA1(1min) Contribution (dBA)	LA1 (1min) Criteria (dBA)
		LA1	LAeq	LA90							
01-09-25	1:29pm to 1:44pm (Day)	63.1	49.2	33.7	WD: 290° WS: 0.9 m/s Rain: Nil	WD: 253° WS: 1.0 m/s Rain: Nil Stability Category: F <sup>1</sup>	Background traffic, wind, trees, insects, birds 34-38 Dog 45 Train 60-67 Quarry inaudible	<24	35	n/a	n/a
01-09-25	8:14pm to 8:29pm (Evening)	52.5	47.5	44.3	WD: n/a WS: 0 m/s Rain: Nil	WD: 68° WS: 0.6 m/s Rain: Nil Stability Category: F <sup>1</sup>	Background traffic, insects, frogs, birds 44-57 Dog 45-47 Quarry inaudible	<34	37	n/a	n/a
01-09-25	11:06pm to 11:21pm (Night)	53.6	47.2	43.9	WD: n/a WS: 0 m/s Rain: Nil	WD: 249° WS: 0.2 m/s Rain: Nil Stability Category: F <sup>1</sup>	Background traffic, insects, frogs, birds 45-50 Train 50-56 Plover 50-56 Quarry inaudible	<34	36	n/a <sup>2</sup>	46

<sup>1</sup> Temperature data sourced from CSIRO CCAM and modelled using TAPM to determine Stability Category.

<sup>2</sup> Measured LA1 value of 53.6 dBA was dominated by traffic, fauna and a train, so unable to estimate contribution for quarry at the assessment location.

### 4.3 Location N3

Noise monitoring at location N3 was conducted on Monday 1 September 2025 with results presented in **Table 4-3**. Noise from the quarry was inaudible at N3 during the day, evening and night monitoring period. The ambient noise environment was dominated by background traffic and fauna. The results satisfy the established noise criteria and indicate that noise emissions from Lynwood Quarry did not contribute to noise nuisance at the time of the monitoring.

**Table 4-3: Noise survey results and observations for location N3**

Date	Time	Descriptor (dBA)			Meteorology (handheld at microphone height)	Onsite Met Station (10m height)	Apparent Noise Source, Description and SPL (dBA)	Lynwood Quarry LAeq (15min) Contribution (dBA)	LAeq (15min) Criteria (dBA)	Lynwood Quarry LA1(1min) Contribution (dBA)	LA1 (1min) Criteria (dBA)
		LA1	LAeq	LA90							
01-09-25	12:44pm to 12:59pm (Day)	40.3	35.2	33.1	WD: 258° WS: 0.8 m/s Rain: Nil	WD: 252° WS: 1.2 m/s Rain: Nil Stability Category: F <sup>1</sup>	Background traffic, insects, birds 32-46 Quarry inaudible	<23	35	n/a	n/a
01-09-25	7:30pm to 7:45pm (Evening)	44.1	44.1	41.3	WD: n/a WS: 0 m/s Rain: Nil	WD: 315° WS: 0.4 m/s Rain: Nil Stability Category: F <sup>1</sup>	Background traffic, insects, frogs 43-49 Quarry inaudible	<31	35	n/a	n/a
01-09-25	11:45pm to 12:00am (Night)	43	45.7	41.8	WD: 229° WS: 1.3 m/s Rain: Nil	WD: 249° WS: 0.2 m/s Rain: Nil Stability Category: F <sup>1</sup>	Background traffic, cicadas, insects, frogs, birds 40-47 Quarry inaudible	<32	36	n/a <sup>2</sup>	47

<sup>1</sup> Temperature data sourced from CSIRO CCAM and modelled using TAPM to determine Stability Category.

<sup>2</sup> Measured LA1 value of 43 dBA was dominated by traffic and fauna, so unable to estimate contribution for quarry at the assessment location.

#### 4.4 Location N4

Noise monitoring at location N4 was conducted on Monday 1 September 2025 with results presented in **Table 4-4**. Noise from the quarry was inaudible at N4 during the day, evening and night monitoring period. The ambient noise environment was dominated by residential rumblings, fauna, wind, trees, background traffic, cars, trucks, a train and aircraft. The results satisfy the established noise criteria and indicate that noise emissions from Lynwood Quarry did not contribute to noise nuisance at the time of the monitoring.

**Table 4-4: Noise survey results and observations for location N4**

Date	Time	Descriptor (dBA)			Meteorology (Handheld at microphone height)	Onsite Met Station (10m height)	Apparent Noise Source, Description and SPL (dBA)	Lynwood Quarry LAeq (15min) Contribution (dBA)	LAeq (15min) Criteria (dBA)	Lynwood Quarry LA1(1min) Contribution (dBA)	LA1 (1min) Criteria (dBA)
		LA1	LAeq	LA90							
01-09-25	1:57pm to 2:22pm (Day)	55.8	44.6	32	WD: 257° WS: 1.2 m/s Rain: Nil	WD: 258° WS: 1.6 m/s Rain: Nil Stability Category: E <sup>1</sup>	Residential rumblings, birds, insects, wind, trees 34-50 Train 45-50 Car passing 50-56 Aircraft 52-65 Quarry inaudible	<22	37	n/a	n/a
01-09-25	8:42pm to 8:57pm (Evening)	46.5	42.6	40.3	WD: n/a WS: 0 m/s Rain: Nil	WD: 68° WS: 0.6 m/s Rain: Nil Stability Category: F <sup>1</sup>	Background traffic, insects 40-47 Dog barking 43 Quarry inaudible	<30	37	n/a	n/a
01-09-25	10:40pm to 10:55pm (Night)	44.1	40.1	38.4	WD: n/a WS: 0 m/s Rain: Nil	WD: 43° WS: 0.6 m/s Rain: Nil Stability Category: F <sup>1</sup>	Background traffic, insects, cicadas, frogs 38-41 Dog barking 43 Truck 44-47 Quarry inaudible	<28	36	n/a <sup>2</sup>	47

<sup>1</sup> Temperature data sourced from CSIRO CCAM and modelled using TAPM to determine Stability Category.

<sup>2</sup> Measured LA1 value of 44.1 dBA was dominated by traffic and fauna, so unable to estimate contribution for quarry at the assessment location.

## 5. Conclusion

This NMA was completed by Ramboll at the Holcim Lynwood Quarry, Marulan, NSW as a quarterly requirement of the NMP. Monitoring was carried out on Monday 1 September 2025 at four locations selected as representative to the sensitive receptors at the surroundings to Lynwood Quarry.

No audible noise from quarry operations was observed at any of the locations during the day, evening and night periods. The results presented in this NMA show compliance with the relevant noise criteria at the Holcim Lynwood Quarry, Marulan, NSW.

## 6. References

- Holcim. (2019). *Lynwood Noise Management Plan*.
- IEC. (2017). *International Electrotechnical Commission. IEC 60942:2017 Electroacoustics – Sound calibrators*.
- Minister for Planning. (2017). *Development Consent DA 128-5-2005*.
- NSW EPA. (2014). *Discussion Paper. Validation of Inversion Strength Estimation Method*.
- NSW EPA. (2017). *Noise Policy for Industry (NPfI). Sydney NSW: NSW Environment Protection Authority*.
- NSW EPA. (2021). *Environment Protection Licence number 12939*.
- Standards Australia. (2018). *AS 1055:2018 Acoustics—Description and measurement of environmental noise*.
- Standards Australia and Standards New Zealand. (2019). *AS/NZS IEC 61672.1:2019 Electroacoustics—Sound level meters, Part 1: Specifications. Australian/New Zealand Standard*.

Intended for

**Holcim (Australia) Pty Ltd**

Document type

**Report**

Date

**January 2026**

# Lynwood Quarry Quarterly Noise Monitoring Assessment

Quarter 4 2025

# Lynwood Quarry Quarterly Noise Monitoring Assessment

## Quarter 4 2025

Project name **NSW Environmental Monitoring 2024-2025**  
Project no. **318001800**  
Recipient **Wayne Beattie, Celin Joshy**  
Document type **Report**  
Version **2**  
Date **15/01/2026**  
Prepared by **Jake Bourke**  
Checked by **Arnold Cho**  
Approved by **Gavan Butterfield**  
Description **Data collected on 3 December 2025 for the quarterly period ending  
December 2025 at Marulan, NSW, as part of the noise monitoring program**

Ramboll  
The Arc, 45a Watt St  
Newcastle, NSW 2300  
Australia

T +61 2 4962 5444  
<https://www.ramboll.com/>

## Contents

Abbreviations and Definitions	2
1. Overview	3
1.1 Project Driver	3
1.2 Site Location and Sensitive Receptors	3
2. Noise Criteria	5
3. Methodology	6
3.1 Meteorological Conditions	6
4. Results and Discussion	7
4.1 Location N1	7
4.2 Location N2	8
4.3 Location N3	9
4.4 Location N4	10
5. Conclusion	11
6. References	12

## Table of Tables

Table 2-1: Monitoring locations and noise criteria	5
Table 3-1: Classification of atmospheric stability (NSW EPA, 2014)	6
Table 4-1: Noise survey results and observations for location N1	7
Table 4-2: Noise survey results and observations for location N2	8
Table 4-3: Noise survey results and observations for location N3	9
Table 4-4: Noise survey results and observations for location N4	10

## Table of Figures

Figure 1: Noise monitoring locations	4
--------------------------------------	---

## Abbreviations and Definitions

	Description
$\Delta T$	Vertical Temperature Difference, i.e. the measured difference in ambient temperature between two elevations on the same tower. It is defined as the upper-level temperature measurement minus the lower-level temperature measurement.
°	Degree
Ambient Noise	The all-encompassing noise within a given environment. It is the composite of sounds from many sources, both near and far.
Background noise	The underlying level of noise present in the ambient noise, excluding the noise source under investigation, when extraneous noise is removed. This is described using the LA90 descriptor (see below).
C	Celsius
CCAM	Conformal Cubic Atmospheric Model
CSIRO	Commonwealth Scientific and Industrial Research Organisation
dB	Abbreviation for decibel, a measure of sound equivalent to 20 times the logarithm (to base 10) of the ratio of a given sound pressure to a reference pressure, and 10 times the logarithm of a given sound power to a reference power.
dB(A)	A measure of A-weighted sound levels. A Weighting is an adjustment made to the sound level measurement to approximate the response of the human ear.
EPA	Environment Protection Authority
EPL	Environment Protection Licence
Extraneous noise	Noise resulting from activities that are not typical of the area. Atypical activities may include construction, and traffic generated by holiday periods. Normal daily traffic is not extraneous noise.
m	Metre
LA1	The noise level, measured in dB(A), which is exceeded for 1 per cent of the measurement period.
LA1(1min)	The noise level, measured in dB(A), which is exceeded for 1 per cent of the time over a 1-minute measurement period, i.e., is exceeded for 0.6 seconds. This measure can approximate to the maximum noise level but may be less if there is more than 1 noise event during this 0.6 second period.
LA10	The noise level, measured in dB(A), which is exceeded for 10 per cent of the time.
LA90	The noise level, measured in dB(A), which is exceeded for 90 per cent of the time, referred to as the background noise level. This is considered to represent the background noise (see above).
LAeq	The level of noise equivalent to the energy average of noise levels occurring over a defined measurement period.
LAeq (period)	The average equivalent noise level, measured in dB(A), during a measurement period (e.g., 15-minute, day, evening, or night).
LAm <sub>ax</sub>	The A-weighted sound pressure level that represents the maximum noise level measured over the time that a given sound is measured.
NATA	National Association of Testing Authorities
NMA	Noise Monitoring Assessment
NMP	Noise Management Plan
NPI	Noise Policy for Industry 2017
NSW	New South Wales
s	Second
SPL	The Sound Pressure Level. Sound pressure is the fluctuation in air pressure, from the steady atmospheric pressure, created by sound. The sound pressure level is the sound pressure expressed on a decibel scale.
TAPM	The Air Pollution Model

Source: Noise Guide for Local Government (NSW EPA, 2023).

## 1. Overview

### 1.1 Project Driver

Ramboll Australia Pty Ltd (Ramboll) has been commissioned by Holcim (Australia) Pty Ltd (Holcim) to complete a Noise Monitoring Assessment (NMA) for Lynwood Quarry ("the quarry") at Marulan, NSW.

This NMA was done in accordance with the following documents:

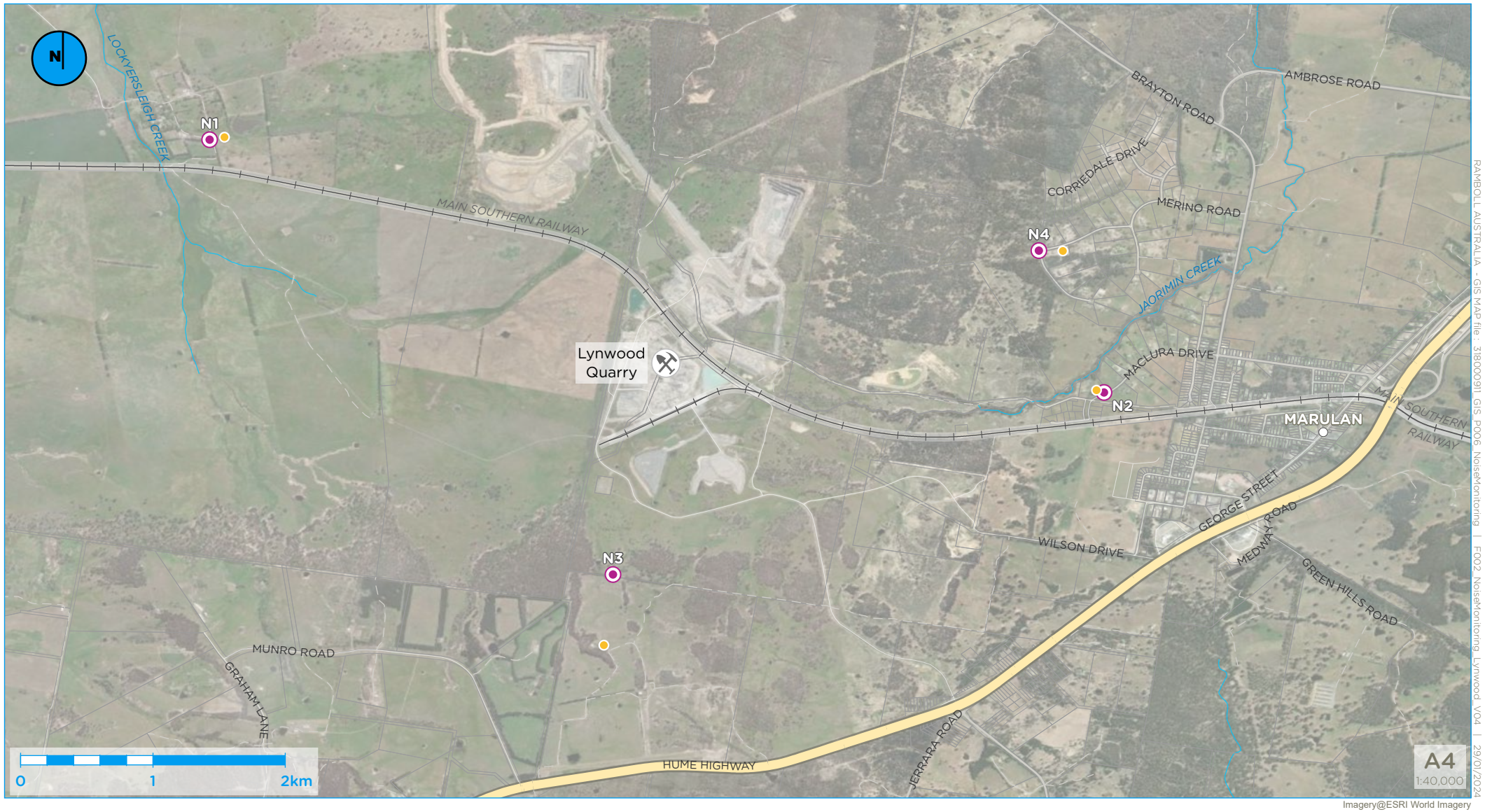
- Noise Policy for Industry (NPI) (NSW EPA, 2017)
- Lynwood Quarry Noise Management Plan (NMP) (Holcim, 2019)
- Environment Protection Licence (EPL) number 12939 (NSW EPA, 2021)
- Development Consent DA 128-5-2005 (Minister for Planning, 2017)
- Australian Standard AS 1055:2018 Acoustics – Description and measurement of environmental noise (Standards Australia, 2018)
- Australian Standard AS/NZS IEC 61672.1:2019 Electroacoustics – Sound level meters, Part 1: Specifications (Standards Australia and Standards New Zealand, 2019)
- International Electrotechnical Commission (IEC) 60942:2017 Electroacoustics - Electroacoustics – Sound calibrators (IEC, 2017).

This NMA has been undertaken for the quarterly period October to December 2025, and forms part of the monitoring program to determine compliance with conditions of the Development Consent.

### 1.2 Site Location and Sensitive Receptors

The quarry is located at 278 Stoney Creek Road, approximately 4 km to the west of the Marulan railway station and town centre. Sensitive receptors surrounding the quarry are primarily rural and residential (to the west of the site). The Hume Highway is located to the east and south of the quarry. Highway traffic (Hume Highway) is a dominant noise source.

The monitoring locations with respect to the quarry and assessed receivers are presented in the locality plan in **Figure 1**.



- Legend**
- Noise monitoring location
  - Residence/noise assessment location



**Figure 1: Noise monitoring locations at Lynwood Quarry**

RAMBOLL AUSTRALIA - GIS MAP file - 318000911 GIS\_P006 NoiseMonitoring | E002 NoiseMonitoring Lynwood\_V04 | 29/01/2024  
 Imagery@ESRI World Imagery

## 2. Noise Criteria

**Table 2-1** includes the applicable noise criteria outlined in the Development Consent and the EPL for the 16 residential receivers surrounding the quarry (L1–L16), and the four monitoring locations adopted from the NMP that are deemed representative and applicable for this NMA (N1–N4). It should be noted that the original location of N3 (on the northern boundary of 16038 Hume Highway, Marulan) continues to be inaccessible and as such N3 has been relocated to a nearby residential receiver approximately 900 m to the west on Munro Road, Marulan (**Figure 1**) where all future monitoring will take place. This revised location is deemed representative and applicable for this NMA.

**Table 2-1: Monitoring locations and noise criteria**

EPL ID	Receiver Description	Monitoring Locations		Day <sup>1</sup>	Evening <sup>2</sup>	Night <sup>3</sup>	Night <sup>3</sup>
		NMP ID	Address	LAeq (15min)	LAeq (15min)	LAeq (15min)	LA1 (1min)
dBA							
L1	West of the Granite Pit.	N1	1114 Carrick Road, Marulan	35	35	35	45
L2	Northeast of the site	-	-	35	35	35	45
L3	Northeast of the site	-	-	35	35	35	45
L4	East of the site in Marulan	-	-	35	37	35	46
L5	East of the site in Marulan	-	-	35	35	35	46
L6	East of the site in Marulan	N2	End of Maclura Drive, Marulan	35	37	36	46
L7	East of the site in Marulan	-	-	38	38	35	55
L8	East of the site in Marulan	-	-	39	38	36	55
L9	East of the site in Marulan	-	-	39	39	37	56
L10	Southeast of the site in Old Marulan	-	-	42	42	40	53
L11	South of the site	N3	Off Marulan South Road, near DD8	35	35	36	47
L12	East of the site in Marulan	N4	Corner of Dorsett and Suffolk Road, Marulan	37	37	36	47
L13	East of the site in Marulan	-	-	40	38	37	47
L14	South of the site	-	-	35	35	35	47
L15	South of the site	-	-	35	35	35	47
L16	Northeast of the site	-	-	35	35	35	45

<sup>1</sup> 7 am–6 pm Monday to Saturday and 8 am–6 pm Sunday and public holidays

<sup>2</sup> 6 pm–10 pm Monday to Sunday

<sup>3</sup> 10 pm–7 am Monday to Saturday and 10 pm–8 am Sunday and public holidays

### 3. Methodology

The monitoring program was developed in accordance with the procedures described in AS 1055:2018 (Standards Australia, 2018) and the Approval Documents referenced in Section 1. The measurements were carried out using a RION Sound Level Meter NL-52 on Wednesday 3 December 2025. The acoustic instrumentation used carries current National Association of Testing Authorities (NATA) calibration and complies with AS/NZS IEC 61672-1:2019 class 1. Calibration of all instrumentation was checked prior to and following measurements using a Pulsar Acoustic Calibrator 105 which carried a current NATA calibration and complies with IEC 60942:2017. Drift in calibration did not exceed ±0.3 dBA.

Attended noise monitoring was conducted for 15-minutes in duration during the day, evening, and night periods over one day at each monitoring location. Where possible, throughout each measurement the operator quantified the contribution of each significant noise source. Where the quarry was not distinctly audible during the attended monitoring, the quarry contribution is estimated to be at least 10 dBA below the ambient noise level, as determined by the LA90.

#### 3.1 Meteorological Conditions

Meteorology has an important influence on noise monitoring assessment. An onsite meteorological station with data recorded at 10m height has been used to adopt wind direction, wind speed and rain data to inform this assessment. Temperature data has been adopted from the Commonwealth Scientific and Industrial Research Organisation (CSIRO) Conformal Cubic Atmospheric Model (CCAM) and modelled using The Air Pollution Model (TAPM) to determine the atmospheric category as outline in **Table 3-1**.

**Table 3-1: Classification of atmospheric stability (NSW EPA, 2014)**

Stability Classification	Pasquill Stability Category	Ambient temperature change with height (°C/100m)
Extremely unstable	A	$\Delta T \leq -1.9$
Moderately unstable	B	$-1.9 < \Delta T \leq -1.7$
Slightly unstable	C	$-1.7 < \Delta T \leq -1.5$
Neutral	D	$-1.5 < \Delta T \leq -0.5$
Slightly stable	E	$-0.5 < \Delta T \leq 1.5$
Moderately stable	F	$1.5 < \Delta T \leq 4.0$
Extremely stable	G	$\Delta T > 4.0$

As stated in the Development Consent, the noise criteria in **Table 2-1** applies under all meteorological conditions except the following:

- Monitoring locations for the collection of representative noise data
- Wind speeds greater than 3 m/s at 10 metres above ground level
- Stability category F temperature inversion conditions and wind speeds greater than 2 m/s at 10 metres above ground level
- Stability category G temperature inversion conditions.

Appendix 10 of the Development Consent also specifies that except for wind speed at microphone height, the data to be used for determining meteorological conditions must be that recorded by a suitable meteorological station operating in the vicinity of the site that complies with the requirements in the Approved Methods for Sampling of Air Pollutants in New South Wales guideline.

## 4. Results and Discussion

### 4.1 Location N1

Noise monitoring at location N1 was conducted on Wednesday 3 December 2025 with results presented in **Table 4-1**. Noise from the quarry was inaudible at N1 during the day, evening and night monitoring period. The ambient noise environment was dominated by wind, fauna and trains. The results are deemed to satisfy the established noise criteria and indicate that noise emissions from Lynwood Quarry did not contribute to noise nuisance at the time of the monitoring.

**Table 4-1: Noise survey results and observations for location N1**

Date	Time	Descriptor (dBA)			Meteorology (Handheld at microphone height)	Onsite Met Station (10m height)	Apparent Noise Source, Description and SPL (dBA)	Lynwood Quarry LAeq(15min) Contribution (dBA)	LAeq(15min) Criteria (dBA)	Lynwood Quarry LA1(1min) Contribution (dBA)	LA1(1min) Criteria (dBA)
		LA1	LAeq	LA90							
03-12-25	11:03am to 11:18am (Day)	57.4	49.3	42.9	WD: 260° WS: 2.3 m/s Rain: Nil	WD: 270° WS: 1.6 m/s Rain: Nil Stability Category: E <sup>1</sup>	Wind, trees, birds 45-60 Quarry inaudible	<33	35	n/a	n/a
03-12-25	9:25pm to 9:40pm (Evening)	54.5	45.3	27.2	WD: 329° WS: 0.5 m/s Rain: Nil	WD: 288° WS: 1.5 m/s Rain: Nil Stability Category: E <sup>1</sup>	Trees, insects, birds 29-37 Train 45-69 Quarry inaudible	<18	35	n/a	n/a
03-12-25	10:01pm to 10:16pm (Night)	37.4	31.0	26.0	WD: 329° WS: 0.5 m/s Rain: Nil	WD: 286° WS: 1.7 m/s Rain: Nil Stability Category: E <sup>1</sup>	Trees, insects, birds 29-37 Train 45-69 Quarry inaudible	<16	35	<37	45

<sup>1</sup> Temperature data sourced from CSIRO CCAM and modelled using TAPM to determine Stability Category.

#### 4.2 Location N2

Noise monitoring at location N2 was conducted on Wednesday 3 December 2025 with results presented in **Table 4-2**. Noise from the quarry was inaudible at N2 during the day, evening, and night monitoring periods. The ambient noise environment was dominated by background traffic, wind, trees, fauna, barking dogs and trains. The results satisfy the established noise criteria and indicate that noise emissions from Lynwood Quarry did not contribute to noise nuisance at the time of the monitoring.

**Table 4-2: Noise survey results and observations for location N2**

Date	Time	Descriptor (dBA)			Meteorology (handheld at microphone height)	Onsite Met Station (10m height)	Apparent Noise Source, Description and SPL (dBA)	Lynwood Quarry LAeq (15min) Contribution (dBA)	LAeq (15min) Criteria (dBA)	Lynwood Quarry LA1(1min) Contribution (dBA)	LA1 (1min) Criteria (dBA)
		LA1	LAeq	LA90							
03-12-25	1:03pm to 1:18pm (Day)	52.6	43.7	38.8	WD: 265° WS: 2.9 m/s Rain: Nil	WD: 338° WS: 0.6 m/s Rain: Nil Stability Category: E <sup>1</sup>	Background traffic, wind, barking dog 35-44 Train passing 49-67 Quarry inaudible	<29	35	n/a	n/a
03-12-25	8:20pm to 8:35pm (Evening)	49.0	38.3	31.8	WD: n/a WS: 0 m/s Rain: Nil	WD: 303° WS: 0.8 m/s Rain: Nil Stability Category: E <sup>1</sup>	Background traffic, insects, birds 32-36 Dog 39-52 Quarry inaudible	<22	37	n/a	n/a
03-12-25	11:03pm to 11:18pm (Night)	51.8	40.4	33.9	WD: n/a WS: 0 m/s Rain: Nil	WD: 271° WS: 1.4 m/s Rain: Nil Stability Category: E <sup>1</sup>	Background traffic, insects, birds 34-38 Plover 43-47 Train 47-61 Quarry inaudible	<24	36	n/a <sup>2</sup>	46

<sup>1</sup> Temperature data sourced from CSIRO CCAM and modelled using TAPM to determine Stability Category.

<sup>2</sup> Measured LA1 value of 51.8 dBA was dominated by traffic, fauna and a train, so unable to estimate contribution for quarry at the assessment location.

### 4.3 Location N3

Noise monitoring at location N3 was conducted on Wednesday 3 December 2025 with results presented in **Table 4-3**. Noise from the quarry was inaudible at N3 during the day and evening monitoring period. The quarry was audible during the night monitoring period with Holcim truck and machine movements. The ambient noise environment was dominated by background traffic, wind, trees and fauna. The results satisfy the established noise criteria and indicate that noise emissions from Lynwood Quarry did not contribute to noise nuisance at the time of the monitoring.

**Table 4-3: Noise survey results and observations for location N3**

Date	Time	Descriptor (dBA)			Meteorology (handheld at microphone height)	Onsite Met Station (10m height)	Apparent Noise Source, Description and SPL (dBA)	Lynwood Quarry LAeq (15min) Contribution (dBA)	LAeq (15min) Criteria (dBA)	Lynwood Quarry LA1 (1min) Contribution (dBA)	LA1 (1min) Criteria (dBA)
		LA1	LAeq	LA90							
03-12-25	12:19pm to 12:34pm (Day)	47.7	40.7	35.4	WD: 270° WS: 1.4 m/s Rain: Nil	WD: 284° WS: 0.9 m/s Rain: Nil Stability Category: E <sup>1</sup>	Background traffic, wind, trees, insects 41-48 Quarry inaudible	<25	35	n/a	n/a
03-12-25	7:45pm to 8:00pm (Evening)	51.6	39.4	31.0	WD: n/a WS: 0 m/s Rain: Nil	WD: 303° WS: 1.3 m/s Rain: Nil Stability Category: E <sup>1</sup>	Birds, wind 40-69 Quarry inaudible	<21	35	n/a	n/a
03-12-25	11:40pm to 11:55pm (Night)	39.5	34.3	30.9	WD: 229° WS: 1.3 m/s Rain: Nil	WD: 239° WS: 0.9 m/s Rain: Nil Stability Category: E <sup>1</sup>	Holcim truck/machine movements, trees, insects 33-35 Bird 40-69 Quarry audible	<35	36	<31	47

<sup>1</sup> Temperature data sourced from CSIRO CCAM and modelled using TAPM to determine Stability Category.

#### 4.4 Location N4

Noise monitoring at location N4 was conducted on Wednesday 3 December 2025 with results presented in **Table 4-4**. Noise from the quarry was inaudible at N4 during the day, evening and night monitoring period. The ambient noise environment was dominated by highway traffic, wind, fauna and a barking dog. The results satisfy the established noise criteria and indicate that noise emissions from Lynwood Quarry did not contribute to noise nuisance at the time of the monitoring.

**Table 4-4: Noise survey results and observations for location N4**

Date	Time	Descriptor (dBA)			Meteorology (Handheld at microphone height)	Onsite Met Station (10m height)	Apparent Noise Source, Description and SPL (dBA)	Lynwood Quarry LAeq (15min) Contribution (dBA)	LAeq (15min) Criteria (dBA)	Lynwood Quarry LA1(1min) Contribution (dBA)	LA1 (1min) Criteria (dBA)
		LA1	LAeq	LA90							
03-12-25	1:32pm to 1:47pm (Day)	49.9	39.5	32.8	WD: 265° WS: 2.3 m/s Rain: Nil	WD: 275° WS: 0.7 m/s Rain: Nil Stability Category: E <sup>1</sup>	Bird, wind, highway traffic, 34-58 Quarry inaudible	<23	37	n/a	n/a
03-12-25	8:44pm to 8:59pm (Evening)	37.5	33.7	31.1	WD: n/a WS: 0 m/s Rain: Nil	WD: 305° WS: 1.0 m/s Rain: Nil Stability Category: E <sup>1</sup>	Truck movements insects, birds 32-33 Quarry inaudible	<21	37	n/a	n/a
03-12-25	10:39pm to 10:54pm (Night)	39.4	35.3	33.0	WD: n/a WS: 0 m/s Rain: Nil	WD: 291° WS: 2.0 m/s Rain: Nil Stability Category: E <sup>1</sup>	Truck movement, insects 33-36 Dog barking 37-39 Quarry inaudible	<23	36	n/a <sup>2</sup>	47

<sup>1</sup> Temperature data sourced from CSIRO CCAM and modelled using TAPM to determine Stability Category.

<sup>2</sup> Measured LA1 value of 39.4 dBA was dominated by traffic and fauna, so unable to estimate contribution for quarry at the assessment location.

## 5. Conclusion

This NMA was completed by Ramboll at the Holcim Lynwood Quarry, Marulan, NSW as a quarterly requirement of the NMP. Monitoring was carried out on Wednesday 3 December 2025 at four locations selected as representative to the sensitive receptors at the surroundings to Lynwood Quarry.

Audible noise identified as emitted from the quarry was recorded during the night period at location N3. The results presented in this NMA show compliance with the relevant noise criteria at the Holcim Lynwood Quarry.

## 6. References

- Holcim. (2019). *Lynwood Noise Management Plan*.
- IEC. (2017). *International Electrotechnical Commission. IEC 60942:2017 Electroacoustics – Sound calibrators*.
- Minister for Planning. (2017). *Development Consent DA 128-5-2005*.
- NSW EPA. (2014). *Discussion Paper. Validation of Inversion Strength Estimation Method*.
- NSW EPA. (2017). *Noise Policy for Industry (NPfI). Sydney NSW: NSW Environment Protection Authority*.
- NSW EPA. (2021). *Environment Protection Licence number 12939*.
- NSW EPA. (2023). *Noise Guide for Local Government*.
- Standards Australia. (2018). *AS 1055:2018 Acoustics—Description and measurement of environmental noise*.
- Standards Australia and Standards New Zealand. (2019). *AS/NZS IEC 61672.1:2019 Electroacoustics—Sound level meters, Part 1: Specifications. Australian/New Zealand Standard*.