

Mt Shamrock Quarry - Community Update

February 2024

Holcim (Australia) Pty Ltd

About the Quarry:

Holcim (Australia) Pty Ltd (**Holcim**) operates the Mt Shamrock Quarry (**the Quarry**) at Mt Shamrock Road, Pakenham Victoria.

The Quarry has been in operation since 1974 and currently operates under Work Authority WA 174, and approved Work Plans and Planning Permit (T050156 PC2.). The Quarry was approved for extension in 2008 following an assessment under the Environment Effects Act 1978.

The Quarry employs approximately 22 full time employees and 10 contractors, and indirectly 40 contractors, mostly from the local area.

The Quarry produces high quality construction materials such as rail ballast, aggregates (for concrete and asphalt) and road bases. These products are essential raw construction materials necessary for building and maintaining homes, roads, railways, bridges, marinas, hospitals, schools, shopping centres and other infrastructure within our communities.

The Quarry has supplied major projects throughout its operational history including:

- Pakenham Bypass (2005-2007)
- Cardinia Road overpass - 2020
- High Capacity Metro Trains depot - Nar Nar Goon - 2018
- 15 Level crossing removals
- Eastlink resheet 2021/2022/2023
- Monash Freeway widening (multiple)
- Upper Yarra Reservoir (2020/2021)

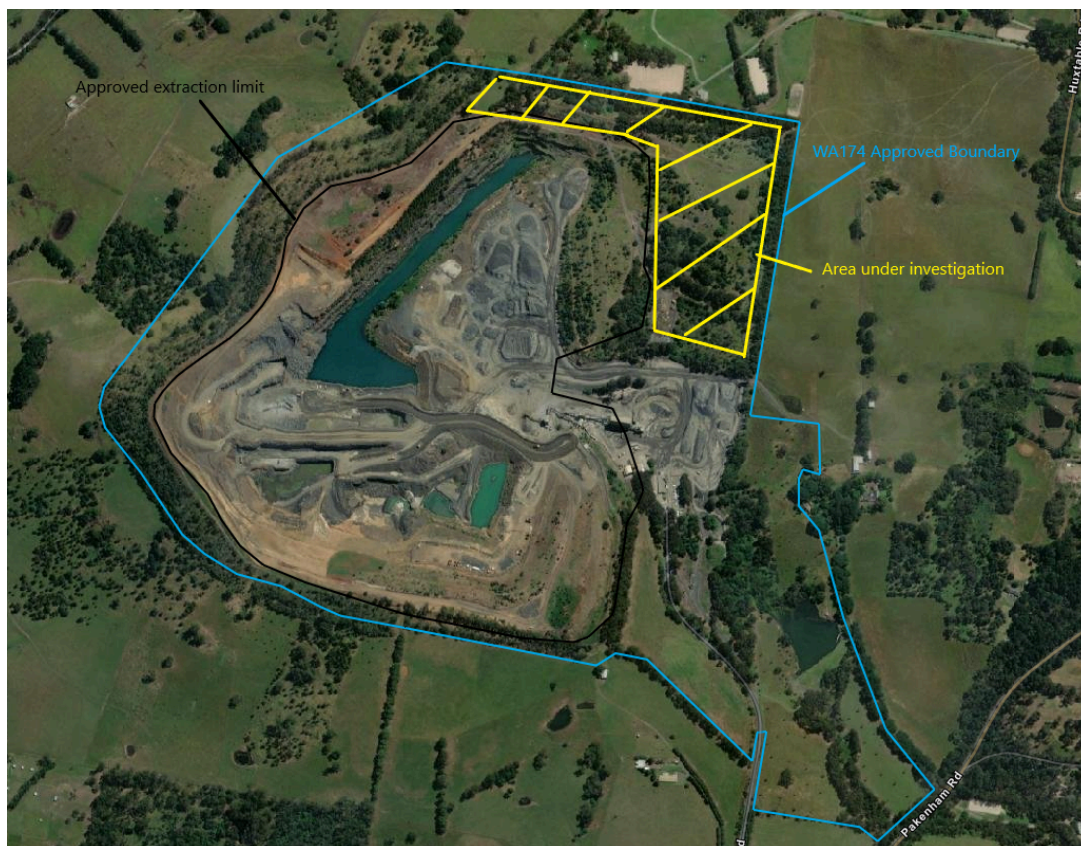
Victoria has a growing demand for construction materials due to major infrastructure projects as part of [Victoria's Big Build](#) and civil construction for housing and industrial developments in the south east growth corridor. In Victoria, there is currently a shortage of suitable, approved, quarry materials that are in close transport proximity to meet the needs of these projects. The Quarry is ideally located for ongoing affordable supply to residential and commercial developments.

Future resource investigation:

Due to this growing demand, Holcim is exploring opportunities to continue the supply of essential materials to the Victorian construction industry by investigating the suitability of further resources within the existing approved boundary of the Quarry (WA174). See below for the conceptual area of interest, marked in yellow.

Commencing in February, Holcim will begin undertaking initial resource drilling and geotechnical assessments in the area shown above to determine the suitability of the Older Basalt for construction materials.

While this process is being undertaken, Holcim will continue to operate the Quarry inline with the current approvals of WA174 & Planning Permit T050156 PC2. There will be no changes to the operation or impacts to the community during this time.



Please note:

Holcim is not considering any changes to its approved current operating hours which are:

- 7am-6pm Monday to Friday
- 7am to noon Saturday
- Blasting Monday to Friday 11am-12 Noon, and 2pm-3pm
- Critical maintenance can occur outside these hours

Holcim is also not considering any changes to site access roads or truck routes in and out of the Quarry.

Keeping you informed

Post the initial technical assessments, Holcim will provide updates as soon as possible via the following pathways:

- Information website: www.holcim.com.au/mt-shamrock
- Consultation through the existing Environmental Review Committee (ERC) which meets quarterly
- All communications with the ERC and copies of all existing environmental performance are posted on the following website <https://www.allpossibilities.com.au/holcim>
- **Email contact:** au-mtshamrock@holcim.com
- **Phone contact:** 0439 381 724