

6 Monthly LRMP report January 2025 - July 2025

This report summarizes all the Landscape & Rehabilitation Management Plan (LRMP) works for the period of January 2025 - July 2025 at the Holcim Mt Shamrock Quarry. Naturelinks at the conclusion of 2025 will provide the annual report for all works undertaken by them in conjunction with local contractors.

Works were undertaken in the following areas depicted in Figure 1: Net Gain (Yellow), Extraction (Orange), Phase C (White), South-East Extraction (Pink), South-East Extraction Back slope (Cream), Southern Extraction (Red), 0.8 Hectare (Dark Maroon), 1.2 Ha (Blue), 2023 Planting Area (Green), Phase A&B (Teal), Landslip (Bright Pink), Paddock Replacement (Ash), Chilean Needle Grass Monitoring & Control (Dark Green) and Southern Hillside (Purple).



Figure 1 - Identification of individual sites at Holcim Mt Shamrock Quarry

Southern Extraction / SE Extraction / 0.8Ha / 1.2 Ha / 2023 Reveg area

Summary of works completed January 2025 - July 2025 in Southern Extraction / SE Extraction / 0.8Ha / 1.2 Ha / 2023 Reveg area;

- Stake + Guard collection. Sorting out collected guards. In-tact guards reused for 2025 plantings, broken guards to be recycled.
- Pack and tanker spray broadleaf weeds for weed control with selective herbicide;
- Pack spray weedy grass species with non-selective herbicide;
- Pack spray Pampas Grass germinates with high rate glyphosate border areas of SE Extraction, Southern Extraction, .8 Hectare and 1.2 Hectare;
- Pack spray Chilean Needle Grass SE Extraction, Southern Extraction and .8 Hectare with non-selective herbicide. Infestation locations marked with pink flagging tape wrapped around a stake;

- Brush cutting weedy grass species for biomass control, fire prevention and in preparation for future spray works;
- Hand weed seeding fleabane .8 Hectare removing seed heads off-site.
- Tanker spray weeds with non-selective herbicide SE Extraction back slope for weed control and in preparation for future planting.

Planting works;

South-East Extraction Area

- Planting of the below species is programmed for 2025 (250 Completed);
 - *Allocasuarina littoralis*, Black Sheoak (80) | Planted as of 31/07: 80
 - *Hakea teretifolia ssp. Hirsuta*, Dagger Hakea (85) | Planted as of 31/07: 85
 - *Oleria myrsinoides*, Silky Daisy-bush (85) | Planted as of 31/07: 85

South-East Extraction Back Slope

- Planting of the below species is programmed for 2025 (175 Completed);
 - *Acacia Pycnantha*, Golden Wattle (15) | Planted as of 31/07: 15
 - *Daviesia latifolia*, Hop Bitter-pea (25) | Planted as of 31/07: 25
 - *Eucalyptus cephalocarpa*, Silver-leafed Stringbark (25) | Planted as of 31/07: 25
 - *Eucalyptus fulgens*, Green Scentbark (25) | Planted as of 31/07: 25
 - *Eucalyptus goniocalyx*, Long-leafed Box, Bundy (10) | Planted as of 31/07: 10
 - *Leptospermum continentale*, Prickly Tea-tree (25) | Planted as of 31/07: 25
 - *Leptospermum lanigerum*, Woolly Tea-tree (25) | Planted as of 31/07: 25
 - *Oleria lirata*, Snowy Daisy-bush (25) | Planted as of 31/07: 25

Southern Extraction Area

- Planting of the below species is programmed for 2025 (250 Completed);
 - *Allocasuarina littoralis*, Black Sheoak (70) | Planted as of 31/07: 70
 - *Hakea teretifolia ssp. Hirsuta*, Dagger Hakea (15) | Planted as of 31/07: 15
 - *Oleria myrsinoides*, Silky Daisy-bush (15) | Planted as of 31/07: 15
 - *Acacia stictophylla*, Dandenong Ranges Wattle (25) | Planted as of 31/07: 25
 - *Banksia marginata*, Silver Banksia (10) | Planted as of 31/07: 10
 - *Pultanaea scabra*, Rough Bush-pea (40) | Planted as of 31/07: 40
 - *Dianella tasmanica*, Tasman Flax-lilly (25) | Planted as of 31/07: 25
 - *Eucalyptus Radiata ssp. radiata*, Narrow-leafed Peppermint (50) | Planted as of 31/07: 50

0.8 Hectare (2021) Revegetation Site

- Planting of the below species is programmed for 2025 (125 Completed);
 - *Banksia marginata*, Silver Banksia (15) | Planted as of 31/07: 15
 - *Pultanaea scabra*, Rough Bush-pea (10) | Planted as of 31/07: 10
 - *Eucalyptus Radiata ssp. radiata*, Narrow-leafed Peppermint (25) | Planted as of 31/07: 25
 - *Goodia lotifolia*, Golden-tip, Clover Tree (25) | Planted as of 31/07: 25
 - *Dianella tasmanica*, Tasman Flax-lilly (25) | Planted as of 31/07: 25
 - *Eucalyptus goniocalyx*, Long-leafed Box, Bundy (25) | Planted as of 31/07: 25

1.2 Hectare (2022) Revegetation Site

- Planting of the below species is programmed for 2025 (400 Completed);
 - *Acacia Pycnantha*, Golden Wattle (35) | Planted as of 31/07: 35
 - *Cassinia longifolia*, Long-leaf Cassinia (25) | Planted as of 31/07: 25
 - *Daviesia leptophylla*, Narrow-leaf Bitter-pea (50) | Planted as of 31/07: 50

- *Epacris impressa*, Common Heath (50) | Planted as of 31/07: 50
- *Eucalyptus dives*, Broad-leafed Peppermint (100) | Planted as of 31/07: 100
- *Eucalyptus goniocalyx*, Long-leafed Box, Bundy (90) | Planted as of 31/07: 90
- *Grevillia alpina* (Southern Hills form), Mountain Grevillia (50) | Planted as of 31/07: 50

1.1 Hectare (2023) Revegetation Site

- Planting of the below species is programmed for 2025 (50 Completed);
 - *Eucalyptus Radiata ssp. radiata*, Narrow-leafed Peppermint (25) | Planted as of 31/07: 25
 - *Leptospermum myrsinoides*, Heath Tea-tree, Silky Tea-tree (25) | Planted as of 31/07: 25

Phase C and Extraction Site

Summary of works completed January 25 - July 25 in Phase C and Extraction Site;

- Pack spray broadleaf and woody weeds with selective and systematic herbicide.

Phase A & B Site

Summary of works completed January 25 - July 25 in Phase A & B Site;

- Stake + Guard collection. Sorting out collected guards. In-tact guards to be reused for 2025 plantings, broken guards to be recycled.
- Planting of the below species is programmed for 2025 (0 Completed, 750 Planned);
 - *Acacia mearnsii*, Black Wattle (150) | Planted as of 31/07: 0
 - *Eucalyptus baxteri*, Brown Stringbark (200) | Planted as of 31/07: 0
 - *Eucalyptus dives*, Broad-leafed Peppermint (200) | Planted as of 31/07: 0
 - *Eucalyptus goniocalyx*, Long-leafed Box, Bundy (200) | Planted as of 31/07: 0

Paddock Replacement, Landslip Plantings, Northern Fence Line and Southern Hillside

Southern Hillside

Summary of works completed January 25 - July 25 in Southern Hill Side;

- Brush cutting and clearing woody debris/bark for fire risk reduction, biomass control and in preparation for future spray works;
- Tanker spray with non-selective herbicide.
- Planting of the below species is programmed for 2025 (100 Completed);
 - *Acacia stictophylla*, Dandenong Ranges Wattle (25) | Planted as of 31/07: 25
 - *Banksia marginata*, Silver Banksia (25) | Planted as of 31/07: 25
 - *Daviesia latifolia*, Hop Bitter-pea (25) | Planted as of 31/07: 25
 - *Goodia lotifolia*, Golden-tip, Clover Tree (25) | Planted as of 31/07: 25

Planting works;

Northern Fence Line

- Planting of the below species is programmed for 2025 (0 Completed, 500 Planned);
 - *Acacia myrtifolia*, Myrtle Wattle (50) | Planted as of 31/07: 0
 - *Acacia oxycedrus*, Spike Wattle (50) | Planted as of 31/07: 0
 - *Acacia paradoxa*, Hedge Wattle (50) | Planted as of 31/07: 0
 - *Acacia stricta*, Hop Wattle, Straight Wattle (150) | Planted as of 31/07: 0
 - *Hakea decurrens ssp. physocarpa*, Bushy Needlewood (100) | Planted as of 31/07: 0
 - *Hakea nodosa*, Yellow Hakea (100) | Planted as of 31/07: 0

Land Slip Areas and Mass 5

- Planting of the below species is programmed for 2025 (0 Completed, 715 Planned);
 - *Dianella revoluta*, Spreading Flax-lily (150) | Planted as of 31/07: 0
 - *Lomandra longifolia* var. *exilis*, Cluster-headed Mat-rush (100) | Planted as of 31/07: 0
 - *Lomandra longifolia* var. *longifolia*, Spiny-headed Mat-rush (100) | Planted as of 31/07: 0
 - *Poa labillardierei* var. *labillardierei*, Common Tussock-grass (200) | Planted as of 31/07: 0
 - *Eucalyptus cypellocarpa*, Mountain Grey Gum (50) | Planted as of 31/07: 0
 - *Eucalyptus fulgens*, Green Scentbark (65) | Planted as of 31/07: 0
 - *Leptospermum continentale*, Prickly Tea-tree (25) | Planted as of 31/07: 0
 - *Leptospermum lanigerum*, Woolly Tea-tree (25) | Planted as of 31/07: 0

Paddock Replacement Plantings

- Planting of the below species is programmed for 2025 (0 Completed, 10 Planned);
 - *Eucalyptus fulgens*, Green Scentbark (10) | Planted as of 31/07: 0

Netgain Offset

Naturelinks continued to monitor and undertake the weed program throughout the first half of 2025.

Below is a monthly detailed summary of the activities undertaken by Naturelinks for the reporting period including quantity and ratio of chemicals used. For clarity, the area is broken down into 2 areas, the Northern and the Southern Area.

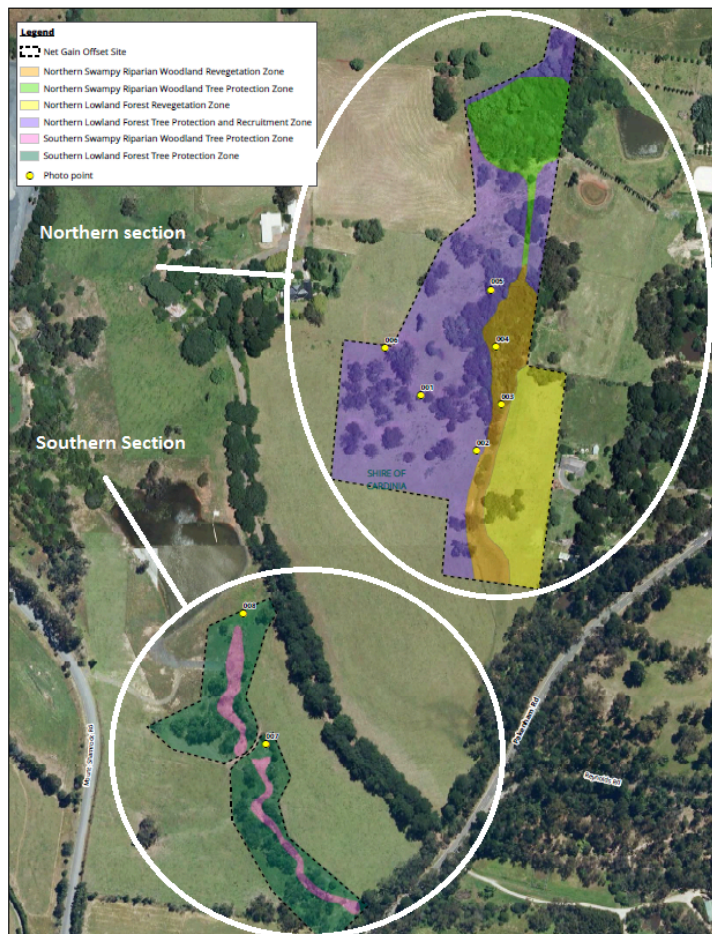


Figure 2 - Northern and Southern Sections of Netgain area

| Month | Description |
|-----------|---|
| Jan 2025 | 28/01/2025 Brushcutting Northern Section swamp areas to gain access to blackberry for future spray works. WEEDS: Phragmites australis Typha latifolia |
| Feb 2025 | 18/02/2025 Brushcutting weedy grass species Southern zone below dam, brushcut Southern zone creekline weedy grass species in preparation for future spray works. Handweed around plantings southern section of Net Gain near stock water trough adjacent to driveway below dam. Pack spray broadleaf weeds across site with selective herbicide. WEEDS: Anthoxanthum odoratum Cirsium vulgare Dactylis glomerata Daucus carota Ehrharta erecta Erigeron spp. Festuca arundinacea Holcus lanatus Solanum nigrum s.l. CHEMICALS: Associate Herbicide 0.1gm/L BS1000 Surfactant Mixed 1ml/L Spot On / Acid Blue Dye Mixed 4ml per litre |
| Mar 2025 | 18/03/2025 Pack spray blackberry and broadleaf weeds Northern Section of Net Gain. Blackberry in top swamp area unable to be reached due to recent heavy rain. Large amount of black berry was sprayed northern boundary of bottom swamp at the eastern end (adjacent to the corner of the paddock opposite). WEEDS: Cirsium vulgare Erigeron spp. Rubus fruticosus spp. agg. Solanum nigrum s.l. CHEMICALS: Maca600 Herbicide Low rate 1.7ml/L BS1000 Surfactant Mixed 1ml/L Spot On / Acid Blue Dye Mixed 4ml per litre |
| May 2025 | 02/05/2025 Pack spray broadleaf weeds southern section (run complete), pack spray high threat broadleaf weeds above spill way (Southern Section). Pack spray high threat grassy weeds East of spill way with non selective herbicide. Hand weed weedy grasses around sensitive remnant areas of Southern Section (Top Half). Handweeding of weedy grass species around sensitive remnant areas - Net Gain Southern section top half. No spraying due to wet weather. WEEDS: Cirsium vulgare Dactylis glomerata Daucus carota Ehrharta erecta Festuca arundinacea Galium aparine Hypochaeris radicata Phalaris aquatica Rumex crispus Solanum nigrum s.l. CHEMICALS: Kamba M Herbicide 6ml/L Associate Herbicide 0.1gm/L Weedmaster Duo Herbicide 12ml/L mixed BS1000 Surfactant Mixed 1ml/L Spot On / Acid Blue Dye Mixed 4ml per litre |
| June 2025 | 13/06/2025 Pack spray broadleaf weeds with selective systemic herbicide Northern + Southern Section. Site induction undertaken with Scot while undertaking spraying. WEEDS: Arctotheca calendula Asparagus scandens Cirsium vulgare Erica lusitanica Erigeron spp. Rubus fruticosus spp. agg. Senecio jacobaea Solanum nigrum s.l. CHEMICALS: Associate Herbicide 0.1gm/L BS1000 Surfactant Mixed 1ml/L Spot On / Acid Blue Dye Mixed 4ml per litre |

- Planting of the below species is programmed for 2025 (0 Completed, 25 Planned);
 - Eucalyptus ovate var. ovate*, Swamp Gum (25) | Planted as of 31/07: 0

Rehabilitation Update

No stripping or reclamation works took place in the period between January and July 2025.

General Property weed control

Other areas that were managed for weeds during the first half of the year using suitably qualified local contractors were as follows:

- Settling dam area
- Quarry bund walls
- Quarry road ways
- Car park areas
- Amenity areas
- Toomuc valley properties (commonly known as Whitelys)

- Landslip plantings at the Toomuc Valley properties
- Southern Boundary and fence line
- Western Boundary and fence line
- Pony club Fence line / open areas
- Donnazons property and specifically around Donnazons Dam

Typical weed control methods were tanker spraying, boom spraying, slashing and brush cutting. Target weeds for the period were Thistle, Blackberry, Pampas Grass and Broome.

The preferred chemicals used by the local contractor are;

- EVIC Bio 360 (general weeds)
- Garlon / Trike 600 for Blackberries (used interchangeably depending on availability)

Pest Management

A feral deer management program was introduced in 2024 with ground-based shooting. No pest control has taken place in the period between January and July 2025.

Erosion & Slope Stability

There has been no observed erosion or movement of rehabilitated faces, the surfaces are holding up well, monthly inspections and post heavy rain events and post each blast event show the batters are stable and drainage is working effectively.

Water quality

The site has been discharging water from both the Southern and Northern water holes. No breeches of the EPA discharge licence (OL000000544, condition OL_DW2) during the reporting period.

Non Conformances/Complaints

There have been no observed outbreaks of new weed species and there have been no complaints related to the LRMP.

LRMP Review

The LRMP was last revised in 2024 as part of the Environmental Management Plan (EMP) update. The revised EMP was submitted to Cardinia Shire Council in December 2024, as at the end of July 2025 the document is still pending Council approval.

Plans for the remainder of 2025

The following actions are planned for the remainder of 2025;

- Actions as listed throughout this report;
- Continue monthly weed maintenance at Netgain and Quarry areas;
- Bushfire prevention in Q4;
- Complete annual reporting requirements.