

Summer Day

Wind Speed and Direction Percentage	Calm - <=0.5m/s	0.5m/s - <=2m/s	2m/s - <=3.0m/s	0.5m/s - <=3.0m/s	3.0m/s - <=5.0m/s	> 5.0m/s
N	0.0%	17.1%	6.1%	23.2%	1.7%	0.6%
NNE	0.0%	18.3%	8.6%	27.0%	1.8%	0.3%
NE	0.0%	15.6%	10.3%	25.9%	4.5%	0.0%
ENE	0.0%	12.1%	11.2%	23.3%	11.3%	0.9%
E	0.0%	9.7%	12.0%	21.7%	18.0%	2.5%
ESE	0.0%	7.8%	11.1%	18.9%	20.7%	3.5%
SE	0.0%	7.7%	9.3%	17.0%	19.2%	3.7%
SSE	0.0%	7.9%	7.4%	15.3%	12.9%	2.8%
S	0.0%	7.9%	5.4%	13.3%	6.6%	1.2%
SSW	0.0%	7.3%	3.9%	11.1%	3.2%	0.2%
SW	0.0%	5.7%	2.4%	8.2%	1.5%	0.1%
WSW	0.0%	4.1%	1.4%	5.5%	1.5%	0.6%
W	0.0%	3.4%	0.8%	4.2%	2.2%	1.2%
WNW	0.0%	4.6%	0.8%	5.4%	2.7%	1.5%
NW	0.0%	9.0%	2.4%	11.4%	3.3%	1.7%
NNW	0.0%	13.9%	4.5%	18.3%	2.8%	1.1%
Total	3.8%	38.0%	24.4%	62.4%	28.5%	5.4%

Summer Evening

Wind Speed and Direction Percentage	Calm - <=0.5m/s	0.5m/s - <=2m/s	2m/s - <=3.0m/s	0.5m/s - <=3.0m/s	3.0m/s - <=5.0m/s	> 5.0m/s
N	0.0%	9.1%	2.6%	11.7%	0.0%	0.0%
NNE	0.0%	19.9%	5.3%	25.2%	0.1%	0.0%
NE	0.0%	28.1%	8.1%	36.2%	0.4%	0.0%
ENE	0.0%	29.5%	11.6%	41.1%	1.8%	0.0%
E	0.0%	27.3%	14.9%	42.2%	4.9%	0.1%
ESE	0.0%	18.8%	15.0%	33.8%	8.1%	0.3%
SE	0.0%	12.8%	13.6%	26.5%	9.7%	0.4%
SSE	0.0%	14.5%	10.2%	24.7%	8.8%	0.6%
S	0.0%	16.2%	6.0%	22.1%	5.7%	0.4%
SSW	0.0%	15.3%	3.5%	18.8%	2.5%	0.3%
SW	0.0%	12.1%	1.9%	14.1%	0.7%	0.1%
WSW	0.0%	7.1%	1.4%	8.5%	0.3%	0.0%
W	0.0%	3.2%	1.5%	4.7%	0.3%	0.0%
WNW	0.0%	1.7%	1.3%	2.9%	0.1%	0.0%
NW	0.0%	2.6%	1.4%	4.0%	0.0%	0.0%
NNW	0.0%	4.6%	1.9%	6.5%	0.0%	0.0%
Total	7.8%	55.7%	25.1%	80.8%	10.9%	0.6%

Summer Night

Wind Speed and Direction Percentage	Calm - <=0.5m/s	0.5m/s - <=2m/s	2m/s - <=3.0m/s	0.5m/s - <=3.0m/s	3.0m/s - <=5.0m/s	> 5.0m/s
N	0.0%	7.0%	0.6%	7.6%	0.0%	0.0%
NNE	0.0%	8.2%	0.4%	8.6%	0.0%	0.0%
NE	0.0%	7.2%	0.1%	7.4%	0.1%	0.0%
ENE	0.0%	5.5%	0.3%	5.8%	0.4%	0.0%
E	0.0%	4.3%	0.7%	5.1%	0.6%	0.0%
ESE	0.0%	4.2%	1.1%	5.3%	0.9%	0.0%
SE	0.0%	12.8%	2.0%	14.9%	1.4%	0.0%
SSE	0.0%	31.1%	3.5%	34.6%	1.4%	0.0%
S	0.0%	44.8%	4.5%	49.3%	1.3%	0.0%
SSW	0.0%	48.0%	4.6%	52.6%	1.1%	0.0%
SW	0.0%	38.8%	3.8%	42.6%	0.6%	0.0%
WSW	0.0%	20.3%	2.0%	22.4%	0.2%	0.0%
W	0.0%	6.6%	0.6%	7.1%	0.1%	0.0%
WNW	0.0%	2.4%	0.2%	2.7%	0.0%	0.0%
NW	0.0%	3.8%	0.5%	4.3%	0.0%	0.0%
NNW	0.0%	5.8%	0.6%	6.4%	0.0%	0.0%
Total	28.9%	62.7%	6.4%	69.1%	2.0%	0.0%

Autumn Day

Wind Speed and Direction Percentage	Calm - <=0.5m/s	0.5m/s - <=2m/s	2m/s - <=3.0m/s	0.5m/s - <=3.0m/s	3.0m/s - <=5.0m/s	> 5.0m/s
N	0.0%	14.0%	3.1%	17.1%	0.7%	0.0%
NNE	0.0%	13.3%	3.1%	16.4%	0.3%	0.0%
NE	0.0%	10.4%	3.0%	13.5%	0.4%	0.0%
ENE	0.0%	8.2%	4.0%	12.2%	2.1%	0.0%
E	0.0%	8.9%	6.1%	15.0%	4.8%	0.1%
ESE	0.0%	9.8%	7.5%	17.3%	7.6%	0.3%
SE	0.0%	11.1%	8.8%	19.9%	11.3%	0.7%
SSE	0.0%	13.7%	9.8%	23.5%	14.5%	1.0%
S	0.0%	15.1%	10.0%	25.1%	14.7%	0.9%
SSW	0.0%	14.4%	9.1%	23.5%	12.7%	0.8%
SW	0.0%	11.7%	6.9%	18.6%	9.4%	0.5%
WSW	0.0%	7.3%	4.1%	11.4%	5.4%	0.2%
W	0.0%	4.4%	1.9%	6.3%	3.0%	0.2%
WNW	0.0%	4.9%	1.5%	6.4%	2.7%	0.1%
NW	0.0%	9.1%	2.4%	11.5%	2.2%	0.0%
NNW	0.0%	13.2%	3.2%	16.4%	1.4%	0.0%
Total	11.9%	42.4%	21.1%	63.5%	23.3%	1.3%

Autumn Evening

Wind Speed and Direction Percentage	Calm - <=0.5m/s	0.5m/s - <=2m/s	2m/s - <=3.0m/s	0.5m/s - <=3.0m/s	3.0m/s - <=5.0m/s	> 5.0m/s
N	0.0%	7.3%	2.6%	9.9%	0.0%	0.0%
NNE	0.0%	9.2%	2.3%	11.5%	0.0%	0.0%
NE	0.0%	10.1%	1.2%	11.3%	0.0%	0.0%
ENE	0.0%	9.2%	0.8%	10.1%	0.1%	0.0%
E	0.0%	8.6%	1.2%	9.8%	0.3%	0.0%
ESE	0.0%	8.4%	1.6%	10.1%	0.4%	0.0%
SE	0.0%	12.8%	3.0%	15.8%	1.0%	0.0%
SSE	0.0%	22.1%	6.5%	28.7%	2.0%	0.0%
S	0.0%	31.5%	9.0%	40.5%	2.9%	0.0%
SSW	0.0%	34.6%	8.7%	43.3%	3.3%	0.0%
SW	0.0%	28.9%	7.3%	36.3%	3.1%	0.0%
WSW	0.0%	18.5%	3.8%	22.3%	1.9%	0.0%
W	0.0%	8.6%	1.1%	9.6%	1.0%	0.0%
WNW	0.0%	3.7%	1.2%	4.9%	0.4%	0.0%
NW	0.0%	4.2%	2.3%	6.5%	0.0%	0.0%
NNW	0.0%	6.1%	2.7%	8.8%	0.0%	0.0%
Total	26.1%	56.0%	13.9%	69.8%	4.1%	0.0%

Autumn Night

Wind Speed and Direction Percentage	Calm - <=0.5m/s	0.5m/s - <=2m/s	2m/s - <=3.0m/s	0.5m/s - <=3.0m/s	3.0m/s - <=5.0m/s	> 5.0m/s
N	0.0%	6.2%	0.4%	6.6%	0.2%	0.0%
NNE	0.0%	5.6%	0.2%	5.9%	0.1%	0.0%
NE	0.0%	3.1%	0.1%	3.2%	0.0%	0.0%
ENE	0.0%	0.8%	0.0%	0.8%	0.0%	0.0%
E	0.0%	0.7%	0.1%	0.7%	0.1%	0.0%
ESE	0.0%	3.1%	0.1%	3.3%	0.3%	0.0%
SE	0.0%	13.2%	0.3%	13.5%	0.6%	0.0%
SSE	0.0%	28.9%	2.9%	31.8%	1.6%	0.0%
S	0.0%	39.5%	5.9%	45.5%	2.5%	0.0%
SSW	0.0%	40.7%	6.6%	47.3%	2.6%	0.0%
SW	0.0%	31.7%	6.5%	38.1%	2.4%	0.0%
WSW	0.0%	16.3%	3.9%	20.2%	1.4%	0.0%
W	0.0%	5.7%	1.0%	6.7%	0.5%	0.0%
WNW	0.0%	2.6%	0.4%	3.0%	0.4%	0.0%
NW	0.0%	4.1%	0.5%	4.6%	0.4%	0.0%
NNW	0.0%	6.0%	0.5%	6.5%	0.4%	0.0%
Total	37.2%	52.1%	7.4%	59.4%	3.4%	0.0%

Winter Day

Wind Speed and Direction Percentage	Calm - <=0.5m/s	0.5m/s - <=2m/s	2m/s - <=3.0m/s	0.5m/s - <=3.0m/s	3.0m/s - <=5.0m/s	> 5.0m/s
N	0.0%	23.1%	3.1%	26.2%	2.8%	1.6%
NNE	0.0%	19.4%	2.4%	21.9%	1.6%	0.5%
NE	0.0%	12.7%	1.3%	14.0%	0.5%	0.1%
ENE	0.0%	7.3%	0.5%	7.8%	0.1%	0.0%
E	0.0%	4.1%	0.8%	4.9%	0.3%	0.0%
ESE	0.0%	3.9%	1.3%	5.2%	0.4%	0.0%
SE	0.0%	5.1%	2.0%	7.1%	0.7%	0.0%
SSE	0.0%	8.0%	3.6%	11.7%	1.5%	0.0%
S	0.0%	11.4%	5.5%	16.9%	3.4%	0.3%
SSW	0.0%	12.3%	6.8%	19.1%	5.8%	1.1%
SW	0.0%	11.6%	7.2%	18.7%	7.0%	1.6%
WSW	0.0%	9.1%	6.6%	15.7%	7.8%	2.1%
W	0.0%	6.7%	5.1%	11.8%	7.6%	3.1%
WNW	0.0%	9.7%	3.9%	13.6%	6.3%	3.5%
NW	0.0%	15.9%	4.0%	20.0%	5.9%	3.4%
NNW	0.0%	20.9%	3.8%	24.7%	4.7%	2.9%
Total	20.9%	45.3%	14.5%	59.9%	14.1%	5.1%

Winter Evening

Wind Speed and Direction Percentage	Calm - <=0.5m/s	0.5m/s - <=2m/s	2m/s - <=3.0m/s	0.5m/s - <=3.0m/s	3.0m/s - <=5.0m/s	> 5.0m/s
N	0.0%	11.6%	4.4%	16.0%	2.7%	0.3%
NNE	0.0%	10.7%	2.7%	13.4%	1.6%	0.0%
NE	0.0%	6.8%	1.1%	7.9%	0.7%	0.0%
ENE	0.0%	3.6%	0.1%	3.7%	0.0%	0.0%
E	0.0%	1.9%	0.0%	1.9%	0.0%	0.0%
ESE	0.0%	1.8%	0.0%	1.8%	0.0%	0.0%
SE	0.0%	6.7%	0.3%	7.0%	0.1%	0.0%
SSE	0.0%	15.1%	0.8%	15.9%	0.3%	0.0%
S	0.0%	24.0%	1.2%	25.2%	0.3%	0.0%
SSW	0.0%	29.0%	2.2%	31.2%	0.3%	0.0%
SW	0.0%	26.7%	2.7%	29.5%	0.1%	0.0%
WSW	0.0%	20.0%	2.3%	22.3%	0.5%	0.0%
W	0.0%	12.6%	2.9%	15.5%	1.9%	0.3%
WNW	0.0%	8.6%	3.6%	12.2%	3.0%	0.5%
NW	0.0%	9.9%	4.4%	14.2%	4.0%	0.5%
NNW	0.0%	11.5%	5.2%	16.7%	4.1%	0.5%
Total	35.9%	50.1%	8.5%	58.6%	4.9%	0.5%

Winter Night

Wind Speed and Direction Percentage	Calm - <=0.5m/s	0.5m/s - <=2m/s	2m/s - <=3.0m/s	0.5m/s - <=3.0m/s	3.0m/s - <=5.0m/s	> 5.0m/s
N	0.0%	12.9%	3.0%	15.9%	1.3%	0.1%
NNE	0.0%	12.2%	2.2%	14.4%	0.7%	0.0%
NE	0.0%	7.7%	0.8%	8.5%	0.2%	0.0%
ENE	0.0%	2.3%	0.1%	2.4%	0.0%	0.0%
E	0.0%	0.9%	0.0%	0.9%	0.0%	0.0%
ESE	0.0%	1.7%	0.0%	1.7%	0.0%	0.0%
SE	0.0%	6.9%	0.0%	6.9%	0.0%	0.1%
SSE	0.0%	14.8%	0.3%	15.1%	0.1%	0.1%
S	0.0%	19.8%	1.0%	20.9%	0.4%	0.1%
SSW	0.0%	21.1%	1.6%	22.7%	0.7%	0.2%
SW	0.0%	16.3%	1.8%	18.1%	0.8%	0.2%
WSW	0.0%	8.8%	1.6%	10.4%	1.2%	0.1%
W	0.0%	3.7%	1.1%	4.8%	1.7%	0.2%
WNW	0.0%	2.4%	1.3%	3.7%	1.9%	0.3%
NW	0.0%	6.5%	2.5%	9.0%	2.3%	0.2%
NNW	0.0%	11.5%	3.1%	14.6%	2.1%	0.2%
Total	53.7%	37.4%	5.1%	42.4%	3.4%	0.5%

Spring Day

Wind Speed and Direction Percentage	Calm - <=0.5m/s	0.5m/s - <=2m/s	2m/s - <=3.0m/s	0.5m/s - <=3.0m/s	3.0m/s - <=5.0m/s	> 5.0m/s
N	0.0%	15.7%	4.6%	20.3%	1.9%	0.8%
NNE	0.0%	15.6%	5.1%	20.7%	1.2%	0.4%
NE	0.0%	13.2%	5.3%	18.6%	1.4%	0.1%
ENE	0.0%	10.3%	5.2%	15.5%	4.3%	0.3%
E	0.0%	8.3%	5.3%	13.6%	7.9%	1.3%
ESE	0.0%	7.0%	5.3%	12.4%	9.8%	2.3%
SE	0.0%	6.7%	5.1%	11.8%	11.3%	3.2%
SSE	0.0%	7.7%	5.1%	12.8%	10.7%	3.6%
S	0.0%	8.7%	5.2%	13.9%	8.5%	3.1%
SSW	0.0%	8.6%	5.2%	13.8%	7.3%	2.8%
SW	0.0%	7.4%	4.7%	12.1%	7.2%	3.2%
WSW	0.0%	5.3%	4.1%	9.4%	7.9%	5.4%
W	0.0%	4.0%	3.4%	7.4%	8.6%	7.6%
WNW	0.0%	5.4%	2.9%	8.3%	8.7%	7.4%
NW	0.0%	9.3%	3.4%	12.7%	7.0%	6.3%
NNW	0.0%	13.3%	4.2%	17.5%	4.0%	3.4%
Total	5.1%	36.7%	18.5%	55.2%	26.9%	12.8%

Spring Evening

Wind Speed and Direction Percentage	Calm - <=0.5m/s	0.5m/s - <=2m/s	2m/s - <=3.0m/s	0.5m/s - <=3.0m/s	3.0m/s - <=5.0m/s	> 5.0m/s
N	0.0%	11.9%	1.7%	13.5%	0.7%	0.0%
NNE	0.0%	14.6%	1.1%	15.7%	0.0%	0.0%
NE	0.0%	15.6%	1.0%	16.6%	0.0%	0.0%
ENE	0.0%	15.5%	1.9%	17.4%	0.3%	0.0%
E	0.0%	14.0%	3.5%	17.4%	1.1%	0.0%
ESE	0.0%	10.6%	4.8%	15.5%	1.9%	0.0%
SE	0.0%	10.2%	5.9%	16.2%	2.8%	0.0%
SSE	0.0%	13.7%	6.4%	20.0%	3.3%	0.0%
S	0.0%	19.1%	5.8%	24.9%	2.8%	0.0%
SSW	0.0%	22.7%	5.0%	27.6%	2.2%	0.1%
SW	0.0%	21.5%	4.0%	25.6%	2.9%	0.3%
WSW	0.0%	17.5%	3.6%	21.1%	4.3%	0.3%
W	0.0%	12.6%	4.0%	16.6%	5.7%	0.3%
WNW	0.0%	9.5%	4.0%	13.5%	6.1%	0.1%
NW	0.0%	10.1%	4.0%	14.1%	4.6%	0.0%
NNW	0.0%	10.8%	3.0%	13.8%	2.3%	0.0%
Total	17.1%	57.5%	14.9%	72.4%	10.2%	0.3%

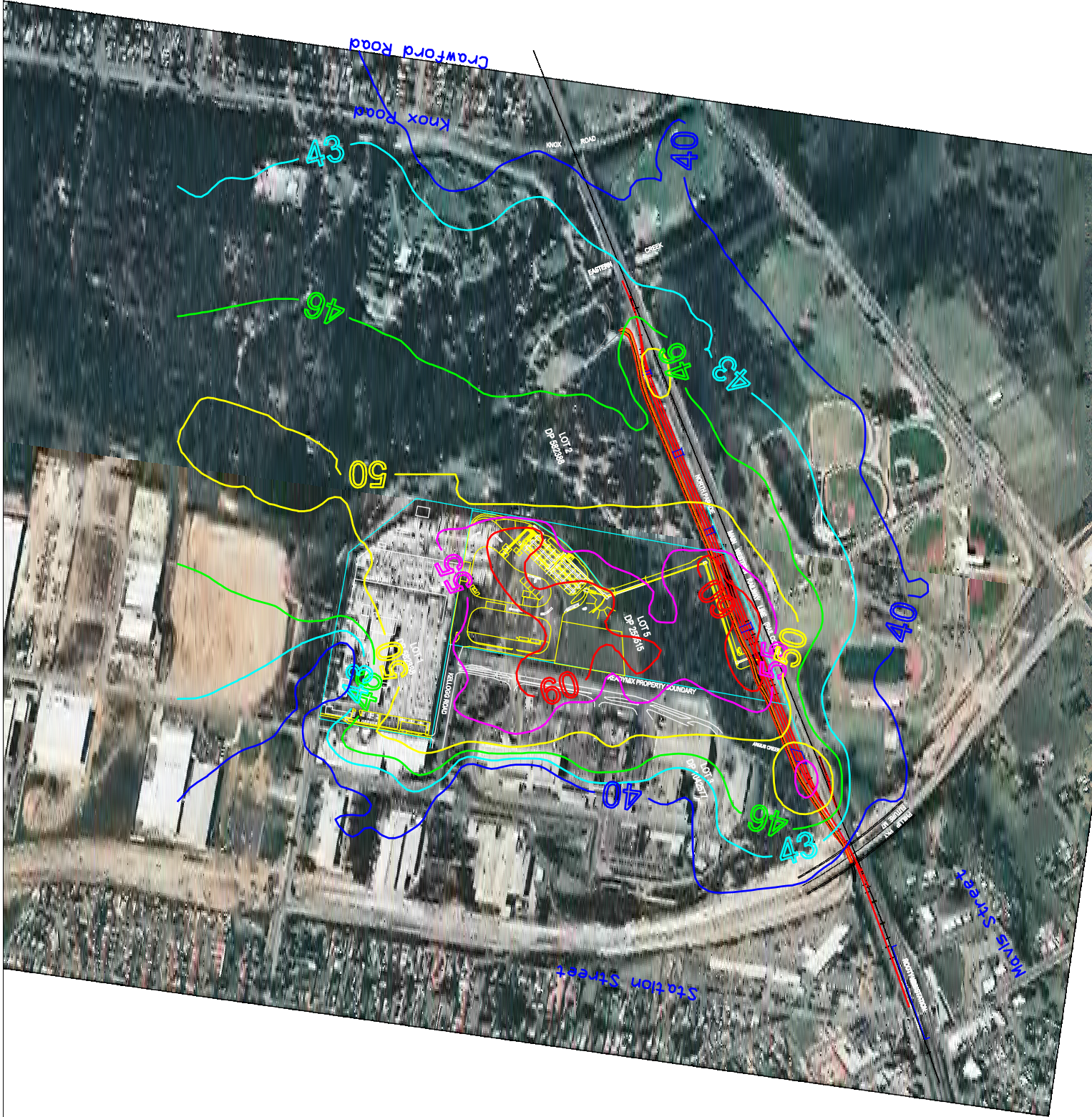
Spring Night

Wind Speed and Direction Percentage	Calm - <=0.5m/s	0.5m/s - <=2m/s	2m/s - <=3.0m/s	0.5m/s - <=3.0m/s	3.0m/s - <=5.0m/s	> 5.0m/s
N	0.0%	9.5%	2.3%	11.8%	0.6%	0.0%
NNE	0.0%	8.3%	1.2%	9.4%	0.2%	0.0%
NE	0.0%	5.1%	0.2%	5.3%	0.0%	0.0%
ENE	0.0%	2.3%	0.0%	2.3%	0.0%	0.0%
E	0.0%	1.3%	0.1%	1.5%	0.0%	0.0%
ESE	0.0%	3.0%	0.3%	3.3%	0.0%	0.0%
SE	0.0%	10.6%	0.6%	11.2%	0.2%	0.0%
SSE	0.0%	25.3%	2.1%	27.5%	0.9%	0.0%
S	0.0%	37.8%	3.9%	41.7%	1.7%	0.0%
SSW	0.0%	40.5%	4.5%	45.0%	2.0%	0.0%
SW	0.0%	34.1%	4.6%	38.7%	2.4%	0.1%
WSW	0.0%	19.8%	3.4%	23.2%	2.2%	0.2%
W	0.0%	7.7%	2.0%	9.7%	1.6%	0.2%
WNW	0.0%	4.5%	2.3%	6.9%	1.7%	0.2%
NW	0.0%	6.5%	2.9%	9.4%	1.3%	0.2%
NNW	0.0%	8.9%	2.8%	11.7%	0.8%	0.1%
Total	31.2%	56.3%	8.3%	64.6%	3.9%	0.2%



30-1202
Rooty Hill
Regional
Distribution
Centre

Noise Contours
SSW
Evening and Night
Appendix D





30-1202
Rooty Hill
Regional
Distribution
Centre

Noise Contours
Calm - Day
Appendix D

